



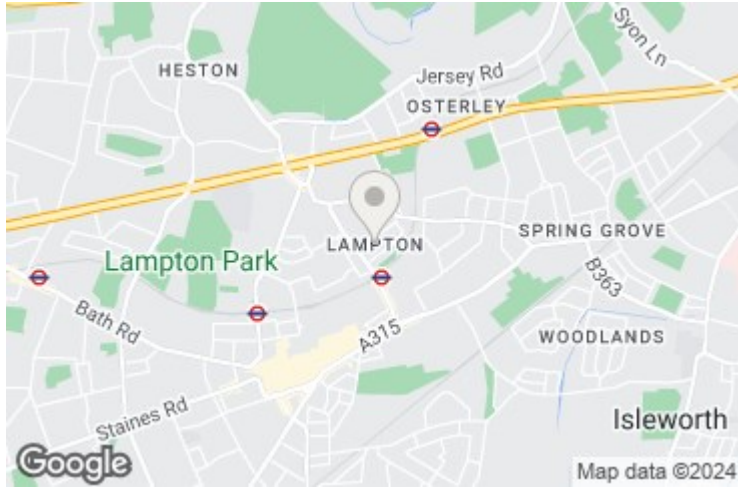
Taunton Avenue, Hounslow, TW3 4AG

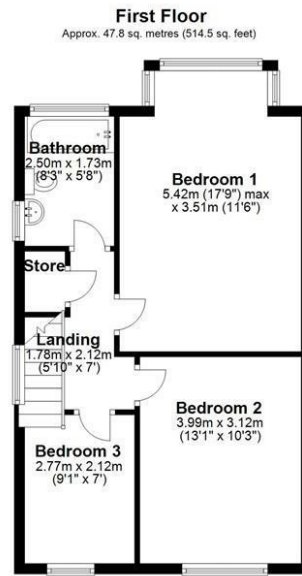
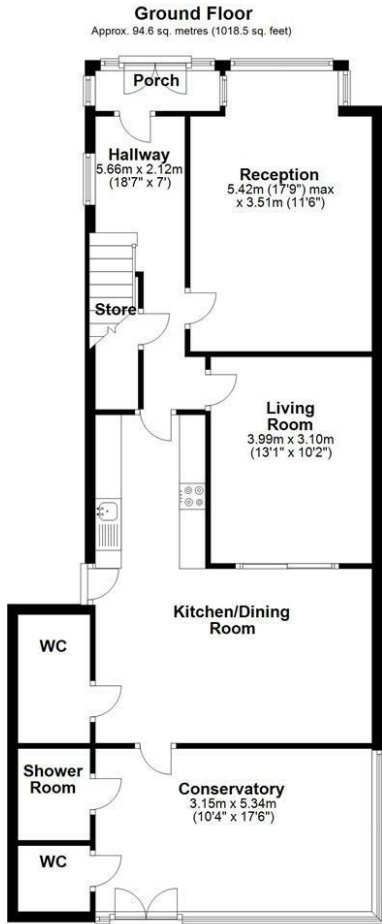
Offers Over £575,000

ANOTHER SALE BY STAMFORDS! An extended semi-detached home conveniently located close to Hounslow East Tube and High Street. The accommodation comprises, on the ground floor two reception rooms, kitchen, extended family room, cloakroom, conservatory with shower room and w/c, on the first floor three bedrooms and family bathroom. The property benefits from gas central heating, double glazed windows, approx. 80ft rear garden and own driveway to the front providing off street parking.

A partner of
The Guild Of Professional Estate Agents
with a network of over 700 independent estate agents

Associated Office: 121 Park Lane, Mayfair, London W1K 7AG t 020 7318 7075





Total area: approx. 142.4 sq. metres (1533.0 sq. feet)

Whilst every attempt has been made to ensure the accuracy of the plan contained here measurements of door/windows/room and any other items are approximate and no responsibility is taken for any error, omission, or mis-statement. This plan is for illustrative purpose only and should be used as such by any prospective purchaser. The service, systems and appliances shown has not been tested and no guarantee as their operability or efficiency can be given made with planup.
Plan produced using PlanUp.

17 Taunton Road, Hounslow



| Energy Efficiency Rating | | Current | Potential |
|---|---|-------------------------|-----------|
| Very energy efficient - lower running costs | | | |
| (92 plus) | A | | |
| (81-91) | B | | |
| (69-80) | C | | |
| (55-68) | D | | |
| (39-54) | E | | |
| (21-38) | F | | |
| (1-20) | G | | |
| Not energy efficient - higher running costs | | | |
| England & Wales | | EU Directive 2002/91/EC | |
| Environmental Impact (CO ₂) Rating | | Current | Potential |
| Very environmentally friendly - lower CO ₂ emissions | | | |
| (92 plus) | A | | |
| (81-91) | B | | |
| (69-80) | C | | |
| (55-68) | D | | |
| (39-54) | E | | |
| (21-38) | F | | |
| (1-20) | G | | |
| Not environmentally friendly - higher CO ₂ emissions | | | |
| England & Wales | | EU Directive 2002/91/EC | |

A partner of

The Guild Of Professional Estate Agents
with a network of over 700 independent estate agents

Associated Office: 121 Park Lane, Mayfair, London W1K 7AG t 020 7318 7075