



£385,000

24 Kingsdown Parade, Kingsdown, Bristol, BS6 5UF

37 Princess Victoria Street, Clifton, Bristol, BS8 4BX

Tel: 0117 370 0557

Email: clifton@elephantlovesbristol.co.uk

Web: www.elephantlovesbristol.co.uk

24 Kingsdown Parade

Kingsdown, Bristol, BS6 5UF

An elegant first floor flat with large windows and far reaching city views.

Located in this attractive Grade II listed building on Kingsdown Parade, this property is perfectly positioned to access some of the most renowned parts of Bristol.

A main front door with oriel window above opens into a wide, sweeping hallway which heads up to this property on the first floor. The door to the flat leads into an inner hallway which connects the primary rooms. The living room spans 19'10 x 16'2 giving a real sense of grandeur and is flooded with light from the floor to ceiling panel glazed windows. Original features have been retained including delicate ceiling and architrave detailing, window shutters, stripped wood doors and a fireplace at one end.

The kitchen sits on the opposite side of the hallway and is fitted with wall and base units, with a wood floor and a panel glazed window facing the street below. The next door master bedroom has neat ceiling coving, a panel glazed window, space for a double bed and fitted wardrobes in both chimney breast recesses.

Stripped timber doors at one end of the living room lead into a small lobby providing access to the second bedroom and bathroom. This compact bedroom fits a lot in; with panelled walls, a fireplace, large window, space for both a double bed and desk. The adjacent bathroom has been recently renovated with a contemporary white suite including a shower over bath, vanity unit, wall mounted storage and a heated towel rail.

This is an uplifting home set within a beautiful period building on one of Bristol's most historic and cherished streets.

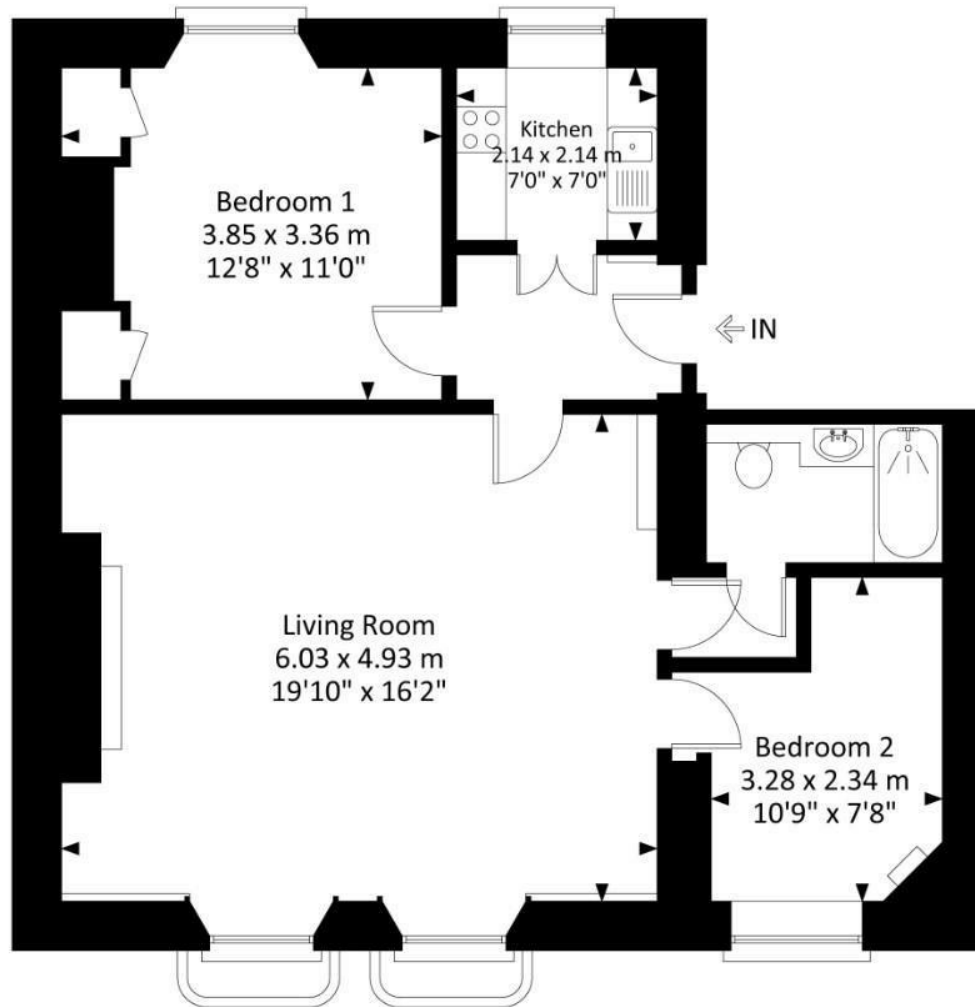
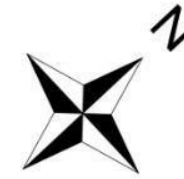






Kingsdown Parade, Cotham, Bristol, BS6 5UF

Approximate Gross Internal Area = 65.26 sq m / 702 sq ft



First Floor

Illustration for identification purposes only, measurements and approximate, not to scale.



elephant 

Bishopston office

2 The Promenade, Gloucester Road, Bristol, BS7 8AL
t: 0117 3700556 e: Bishopston@elephantlovesbristol.co.uk

elephantlovesbristol.co.uk

Clifton office

37 Princess Victoria Street, Clifton, Bristol, BS8 4BX
t: 0117 3700557 e: Clifton@elephantlovesbristol.co.uk