

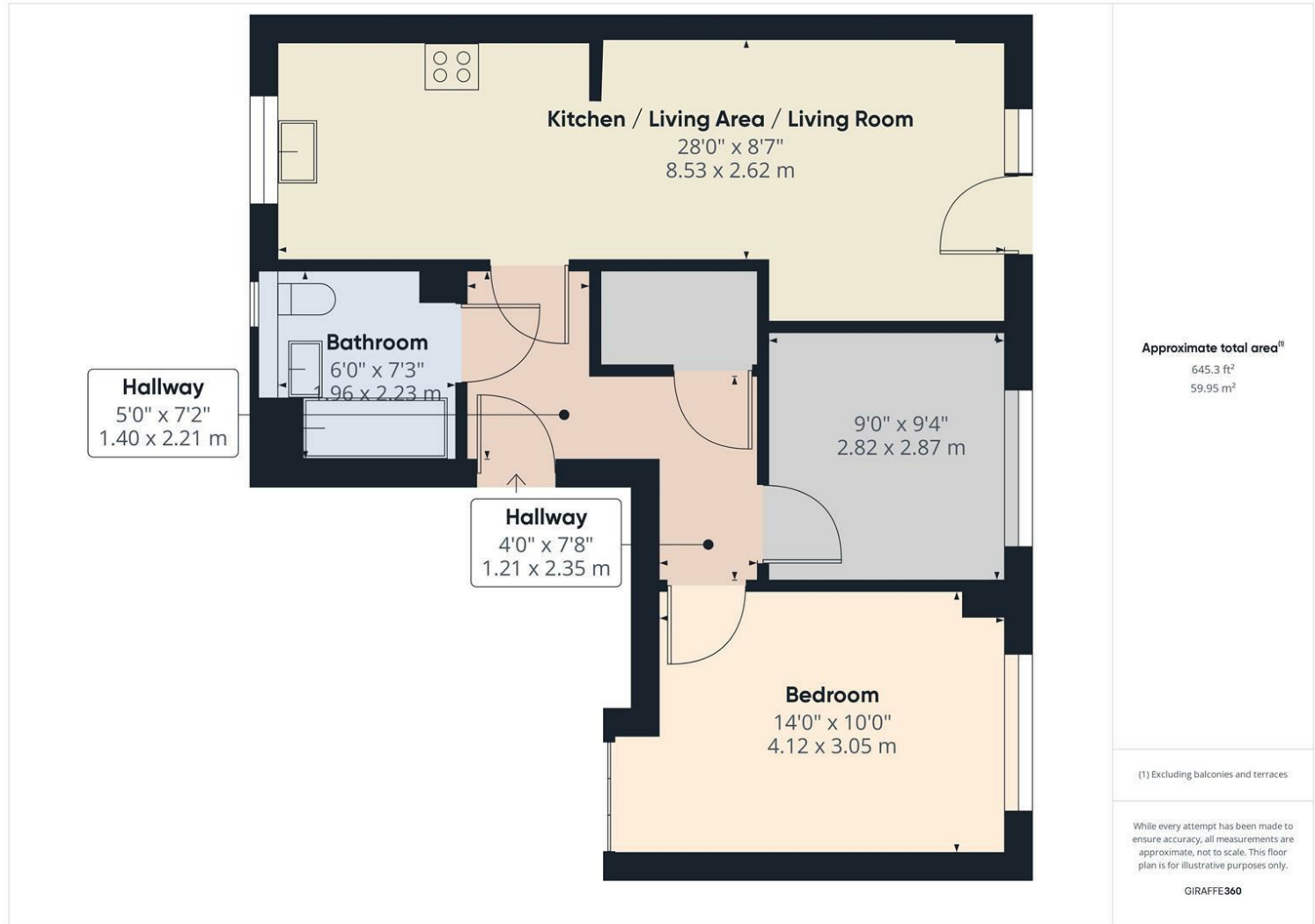
Hansler Grove, East Molesey, KT8 9FF



£400,000 Leasehold

Harmes Turner Brown are pleased to offer this modern well appointed two bedroom ground floor apartment which is situated conveniently for all the village amenities in East Molesey as well as being within a short distance of Hampton Court with its boutique shops, cafes, pubs, restaurants and, of course, mainline station. The well presented accommodation briefly comprises spacious entrance hallway with wood effect composite flooring and deep built in storage cupboard, a good size living area with a modern open plan kitchen with fitted integrated appliances. There is a generous size master bedroom with built in wardrobe space, a second double bedroom and a modern white bathroom suite with chrome furnishings, tiled flooring and part tiled walls. Externally, is a small balcony area and an allocated parking space with the additional use of a communal bike storage shed. This property can be purchased on a shared ownership method subject to qualification or can be purchased 100%. No onward chain. Council tax band D.

Hansler Grove, East Molesey, KT8 9FF



- NO ONWARD CHAIN
- GAS CENTRAL HEATING
- DOUBLE GLAZING
- ALLOCATED PARKING SPACE
- MODERN KITCHEN AND BATHROOM
- SECURITY VIDEO ENTRY SYSTEM
- CAN BE PURCHASED ON A SHARED OWNERSHIP OR 100%
- TWO DOUBLE BEDROOMS
- CLOSE TO LOCAL AMENITIES AND MAINLINE STATION

This plan is a representation of the property and measurements, where given, are approximate. None of the fixtures and fittings have been tested by us. These details are thought to be materially correct but we cannot guarantee there are no error and emissions and they do not form part of any contract