



27/14 Halmyre Street
Leith, Edinburgh
EH6 8QE



Please contact us for
more information:

0131 555 7055
property@watermans.co.uk



Summary

With its enviable city location in desirable Leith, within walking distance from the city centre, this handsome one-bedroom, top-floor tenement flat will appeal to a wide demographic of buyers, including first-time buyers, couples, city professionals and rental investors. The home boasts an open-plan west-facing reception area enjoying ample natural light from a large window and a modern fitted kitchen with a convenient utility closet. The flat further features a spacious double bedroom with a westerly aspect and a modern bathroom with bathroom with a shower-over-bath. Outside the home, the property benefits from a well-kept communal garden grounds and zoned permit parking.

Features

- Top-floor flat in sought-after Leith
- Forms part of a traditional tenement building
- Shared stairwell with secure entry system
- West-facing open-plan living/dining/kitchen
- Double bedroom with a westerly aspect
- Contemporary family bathroom
- Convenient in-unit utility cupboard
- Shared gardens to the front and rear
- Gas central heating and double glazing
- Less than 10 minutes walk from Leith Links
- Strolling distance from the city centre
- Nearby shops and transport links



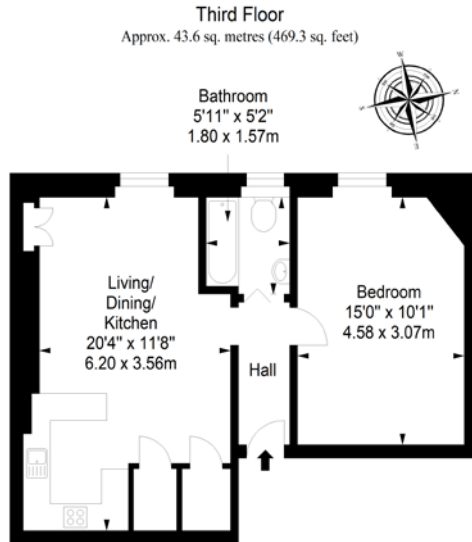








Floorplan



Total area: approx.43.6 sq. metres (469.3 sq. feet)

EPC Rating - D | Council Tax band - A | Home report Value - £180,000

Extras: all fitted floor and window coverings, light fittings and kitchen appliances are included in the sale.

Price & Viewings

Please refer to our website
www.watermans.co.uk

Edinburgh

5-10 Dock Place, Leith, EH6 6LU
0131 555 7055
property@watermans.co.uk

Glasgow

193 Bath Street, Glasgow, G2 4HU
0141 483 8325
property@watermans.co.uk