



Watermans




3/6 Western
Harbour
Midway



3/6 Western
Harbour Midway,
Newhaven,
Edinburgh, EH6 6LD



Property Summary

Forming part of a sought-after waterfront development in Newhaven, this first-floor apartment offers a fabulous open-plan living area, three bedrooms, and two bathrooms, plus access to landscaped shared gardens and secure allocated parking. The apartment is well-presented with modern fixtures and fittings and neutral décor, and is sure to appeal to couples, professionals, young families, downsizers, and rental investors alike, with close proximity to the waterfront and excellent local amenities.

Please contact us for more information:

0131 555 7055 | property@watermans.co.uk | www.watermans.co.uk



Features

- First-floor apartment in Newhaven
- Part of a sought-after waterfront development
- Secure shared entrance and lift service
- Entrance hall with excellent built-in storage
- Open-plan kitchen/living/dining room
- Modern kitchen design
- Principal bedroom with dressing area and en-suite shower room
- Family bathroom with shower-over-bath
- Two further double bedrooms (one with storage)
- Access to landscaped shared gardens
- Secure allocated parking
- Gas central heating and double glazing





“Fabulous open-plan living area, three bedrooms, and two bathrooms”





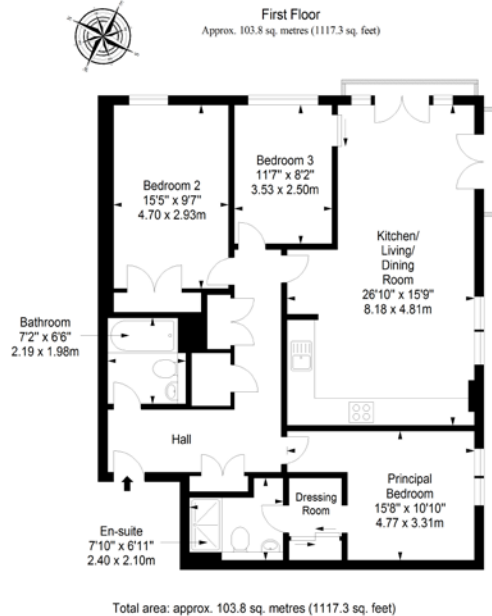


◆
3/6 Western
Harbour
Midway

RECEPTION

RECEPTION

Floorplan



EPC Rating - B | Council tax band - F | Home report Value - £305,000

Extras: To include all fitted carpets and fitted floor coverings, light fixtures and fittings, all white goods, and the property is currently furnished and all items can be included in the final sale price.

Price & Viewings

Please refer to our website
www.watermans.co.uk

Edinburgh

5-10 Dock Place, Leith, EH6 6LU
0131 555 7055
property@watermans.co.uk

Glasgow

193 Bath Street, Glasgow, G2 4HU
0141 483 8325
property@watermans.co.uk