



Chelsea Embankment, SW3

£700 Per week

Immaculate two bedroom riverside apartment to let in Chelsea. The property has been finished to an incredibly high standard throughout and is complimented with full frontal river views and overlooks Battersea Park.

Chelsea Embankment is located just minutes from Sloane Square and all that Kings Road has to offer. This property is also moments from Battersea Park. There are also some hidden gems like the Chelsea Physic Gardens and Gordon Ramsays restaurant on Royal Hospital Road.

Features

- Two Double Bedroom
- Two Bathrooms
- Finished to a High Standard
- Open Plan Kitchen
- Balcony
- River Views

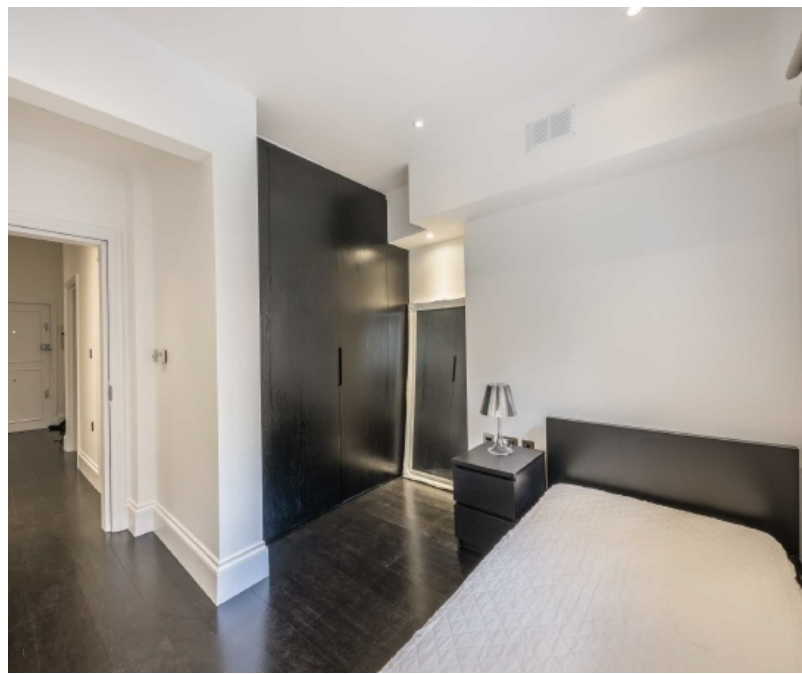


Chelsea Embankment, London, SW3

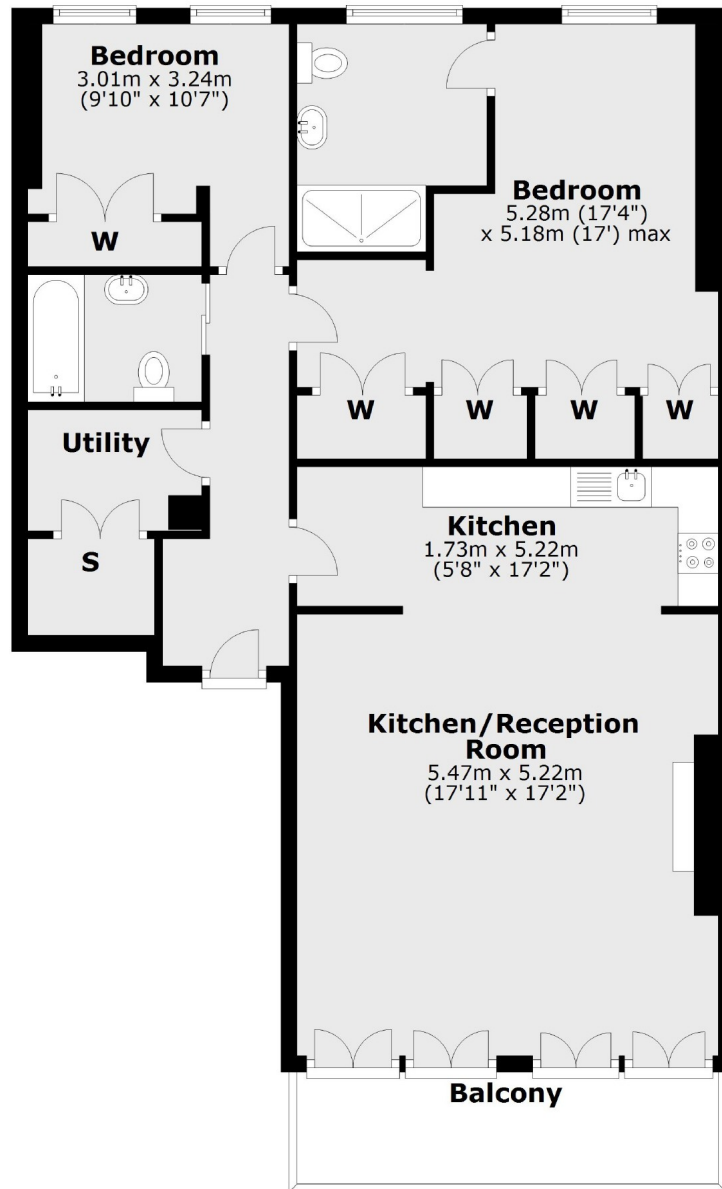
Upon entering the property is an incredibly spacious living room with doors opening out onto a balcony with river views. The kitchen is open plan with all modern integrated appliances including a MIELE coffee machine. There is a separate utility area with a separate washer a dryer. The two bedrooms are at the rear of the property with ample storage. The master bedroom has an en suite bathroom with a walk in shower and the second bathroom has a shower over the bath.

The property has very high ceilings throughout and has been recently repainted.





Chelsea Embankment, London, SW3



Ground Floor

Total area: approx. 92.7 sq. metres (997.6 sq. feet)

Contact

To arrange a viewing call our office on the number below or visit our website.



Energy Rating: C. We aim to make our particulars both accurate and reliable. However they are not guaranteed; nor do they form part of an offer or contract. If you require clarification on any points then please contact us, especially if you're traveling some distance to view. Please note that appliances and heating systems have not been tested and therefore no warranties can be given as to their good working order.