



## Queen Elizabeth Street, SE1

### £1,200,000

Spread over 1400 square feet, this three double bedroom is immaculately presented and offers ample living space, two bathrooms, secure parking, large private terrace, concierge and gym facilities.

The Circle is surrounded by the shops, cafés restaurants and delis of Shad Thames and is only 0.4 miles from London Bridge station offering excellent transport links to anywhere in London.

### Features

- Three Double Bedrooms
- Bright And Airy
- Private Terrace
- Concierge Facilities
- Excellent Condition
- Chain Free



## Queen Elizabeth Street, SE1

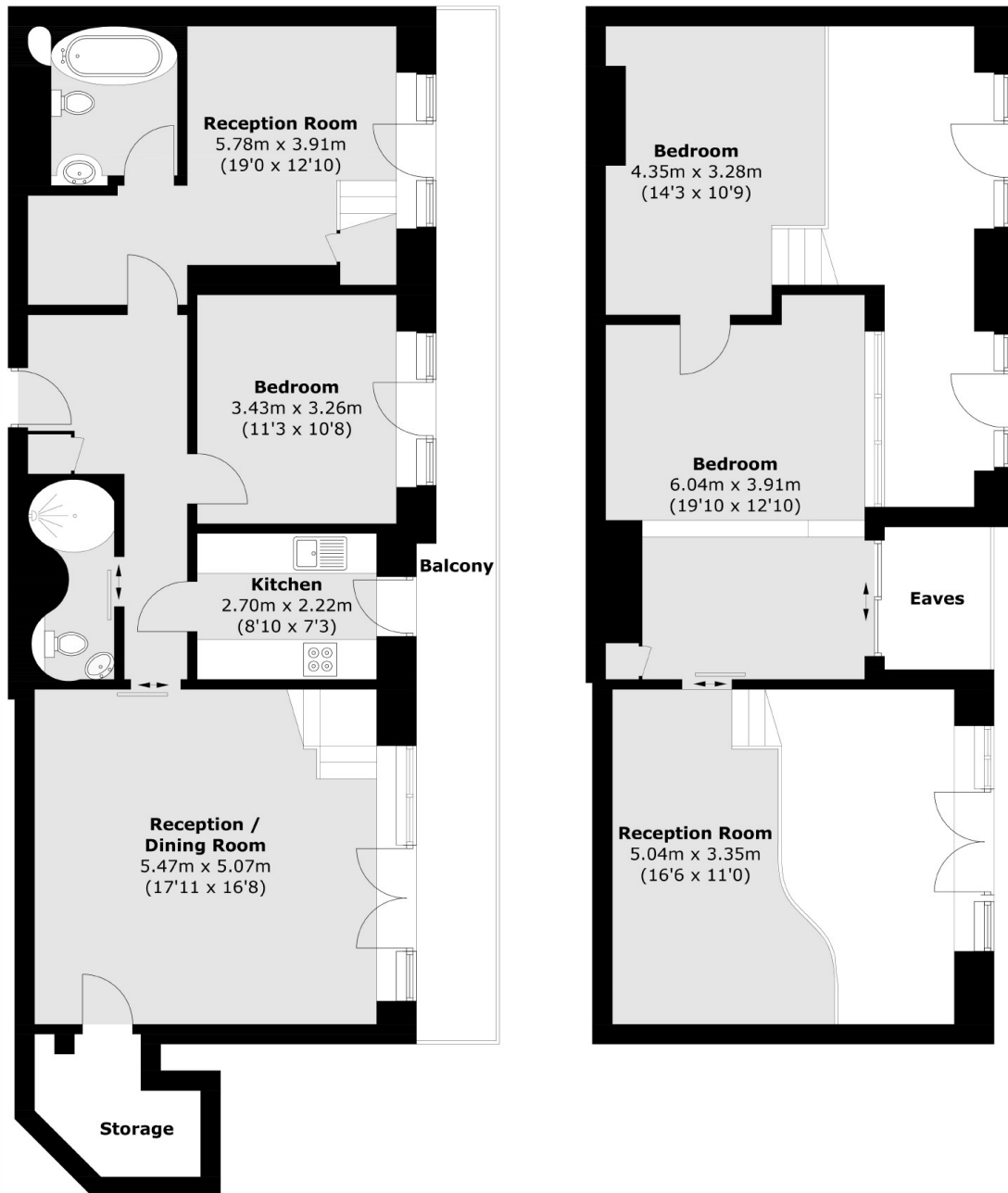
Arranged over two floors and spanning over 1,400sqft, the first floor boasts three large double bedrooms, family bathroom, modern kitchen and ample storage and a private terrace.

Undoubtedly one of the most sought after and prestigious developments in Shad Thames, The Circle offers concierge service, secure underground parking along with gym, spa and swimming pool facilities.





# Queen Elizabeth Street, London, SE1



## Fourth Floor

Total area (approx.): 135.2 sq. m (1,455.3 sq. ft)  
External area (approx.): 16.1 sq. m (173.3 sq. ft)  
(Excluding Storage / Void / Eaves)

## Mezzanine