

Horseshoe Close, E14

£335 Per week

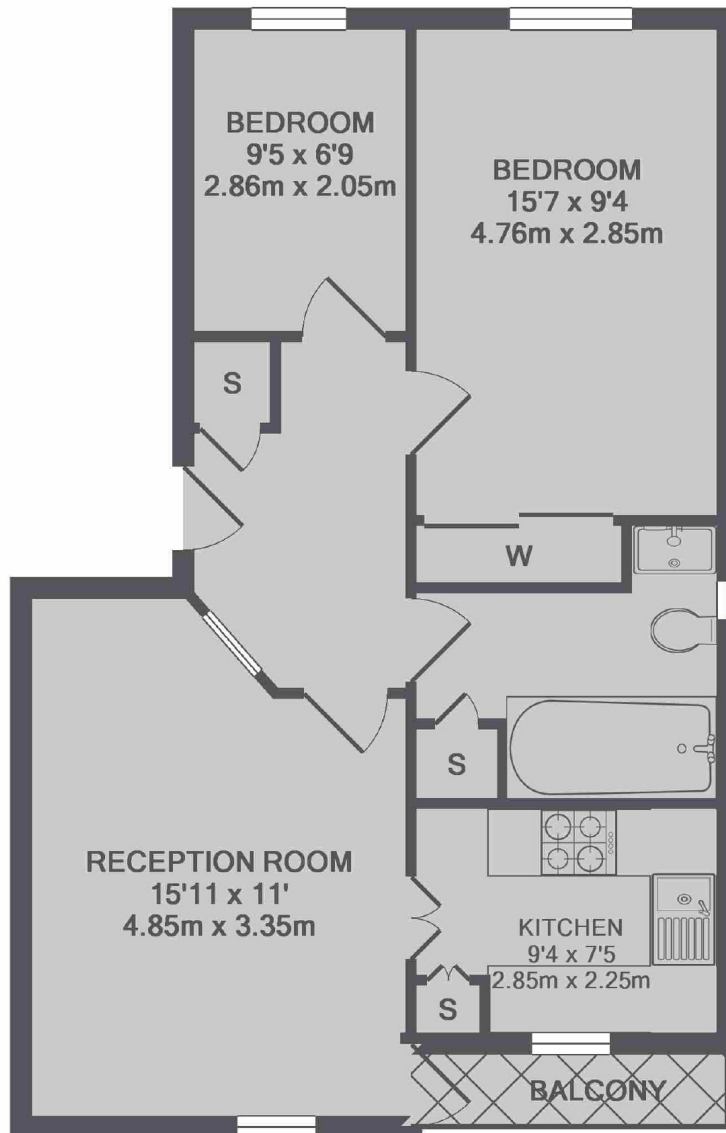
A well presented two bedroom apartment on the top floor of this secure, gated development. This bright apartment has a separate kitchen, a private balcony and wooden flooring throughout

Horseshoe Close is moments form the Greenwich Foot tunnel and River Thames. Mudchute Park and Farm is also nearby.

Features

Two Bedrooms
One Bathroom
Top Floor
Secure Parking
Ample Storage
Private Balcony

Horseshoe Close, London, E14



TOTAL APPROX. FLOOR AREA 579 SQ.FT. (53.8 SQ.M.)

Contact

To arrange a viewing call our office on the number below or visit our website.



Energy Rating: C. We aim to make our particulars both accurate and reliable. However they are not guaranteed; nor do they form part of an offer or contract. If you require clarification on any points then please contact us, especially if you're traveling some distance to view. Please note that appliances and heating systems have not been tested and therefore no warranties can be given as to their good working order.