



Westferry Road, E14

£657 Per week

A spacious two bedroom riverside apartment situated within the popular Millennium Harbour development. This property offers a large reception room with river views from a communal garden area, separate fitted kitchen, two spacious double bedrooms (one en-suite) and a family bathroom.

Millennium Harbour is close to the many shops, restaurants & bars of Canary Wharf, in addition to the DLR, Jubilee line and Elizabeth line railway links.

Features

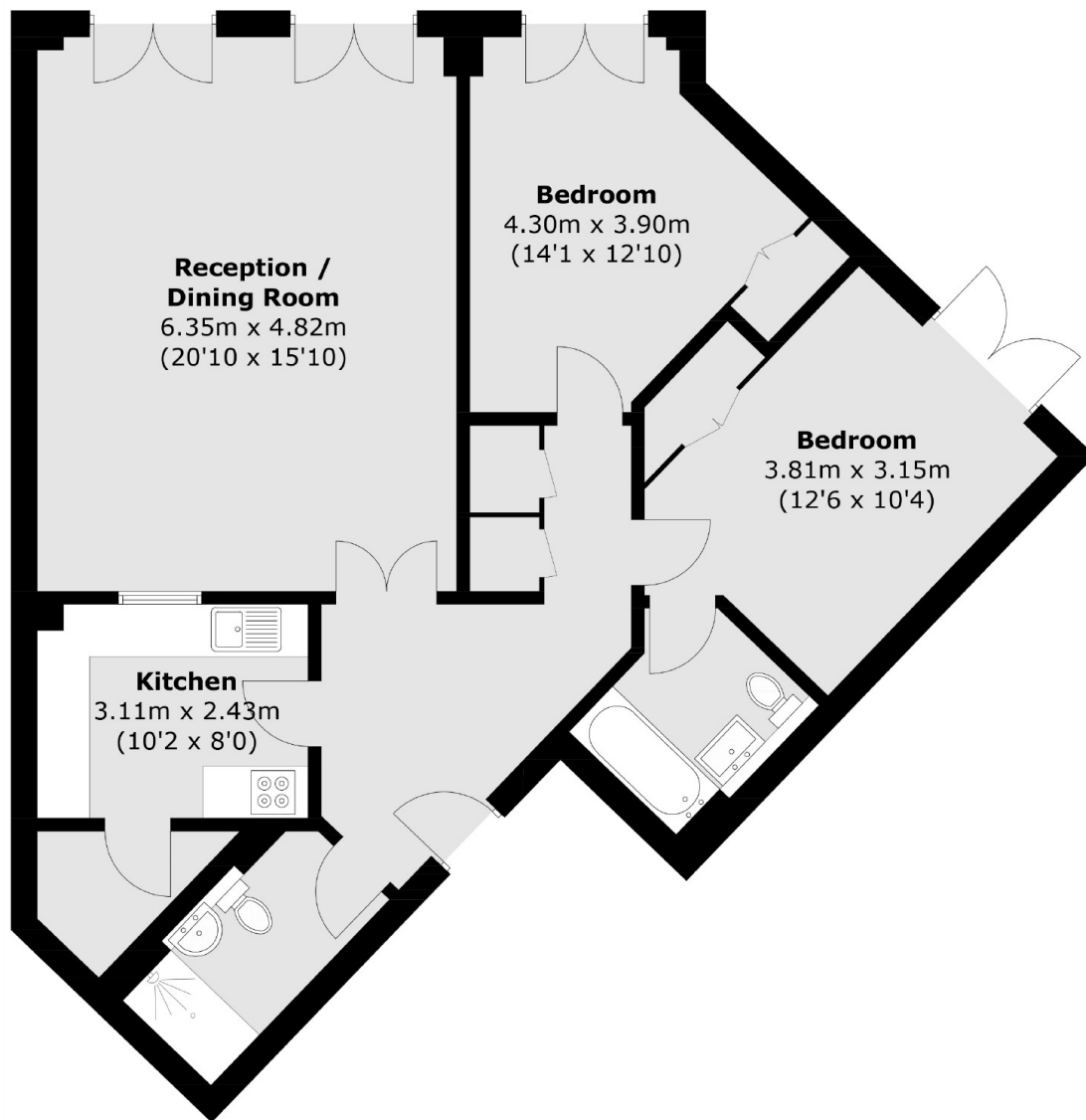
- Two Bedrooms
- Two Bathrooms
- Wooden Flooring
- Concierge
- Separate Kitchen
- Communal Garden



Westferry Road, E14



Westferry Road, London, E14



Ground Floor

Total area (approx.): 93.1 sq. m (1,002.1 sq. ft)