



Turner Street, E16

£375,000

A fantastic apartment close to Canning Town and Royal Victoria. The large two bedroom flat has two bathrooms, open plan kitchen/ living room and parking permit. The development has well maintained communal gardens.

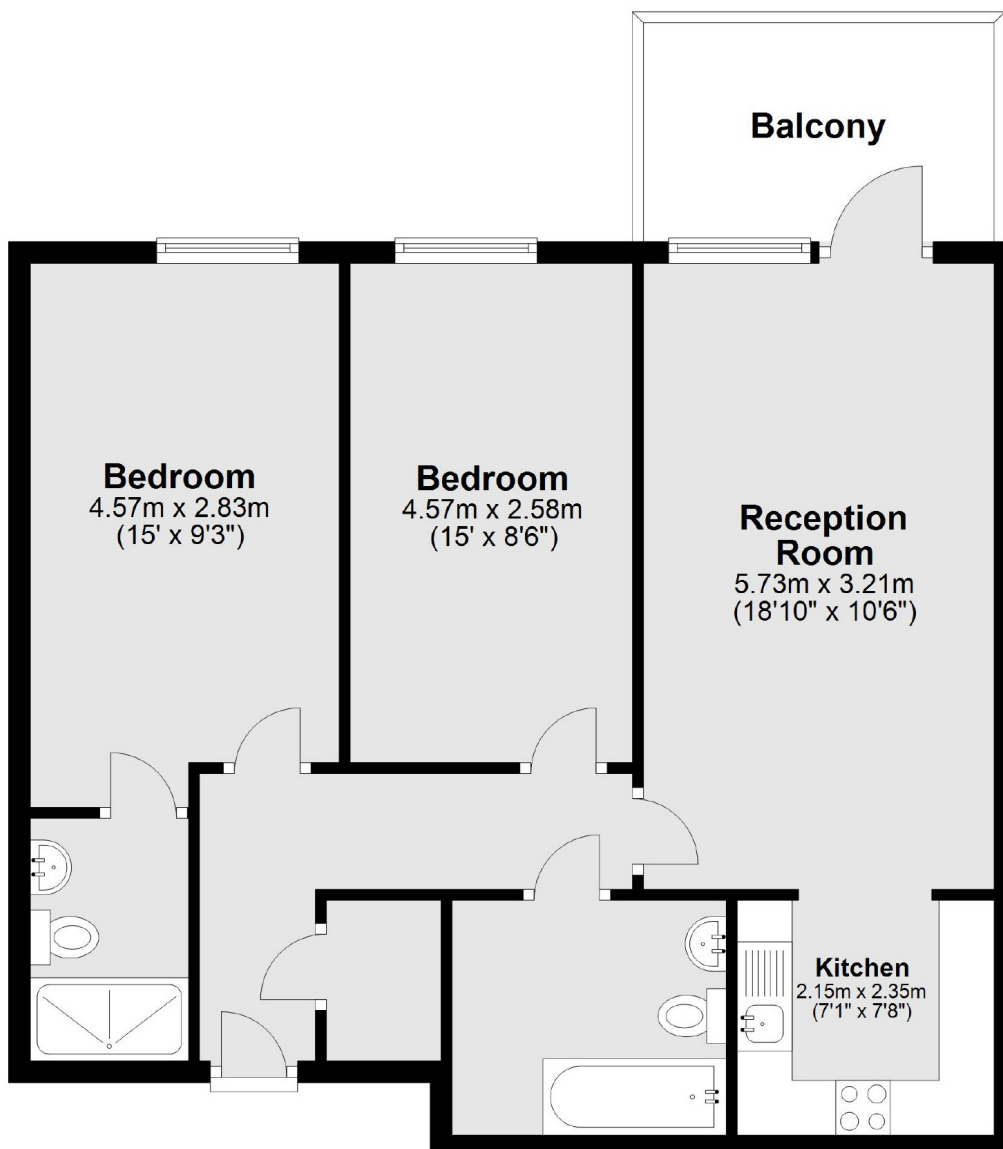
Jupiter House is 0.3 miles from Canning Town Station which offers superb links to Canary Wharf and the City.

Features

- Two Bedrooms
- Two Bathrooms
- Open Plan
- Fifth Floor
- Balcony
- Parking Permit

**Turner Street,
London, E16**

Fifth Floor



Main area: Approx. 67.7 sq. metres (728.5 sq. feet)
Plus balconies, approx. 6.7 sq. metres (72.5 sq. feet)

Dexters

Canary Wharf
39 Westferry Road
London
E14 8JH
Sales
020 7517 1199

Energy Rating: B. We aim to make our particulars both accurate and reliable. However they are not guaranteed; nor do they form part of an offer or contract. If you require clarification on any points then please contact us, especially if you're traveling some distance to view. Please note that appliances and heating systems have not been tested and therefore no warranties can be given as to their good working order.

 **RICS** | Regulated
Estate Agent
and Letting Agent

dexters.co.uk