



Western Gateway, E16

£484 Per week

A bright one bedroom apartment on the fifth floor of this dockside development. This apartment has an open plan reception room, private balcony and a concierge.

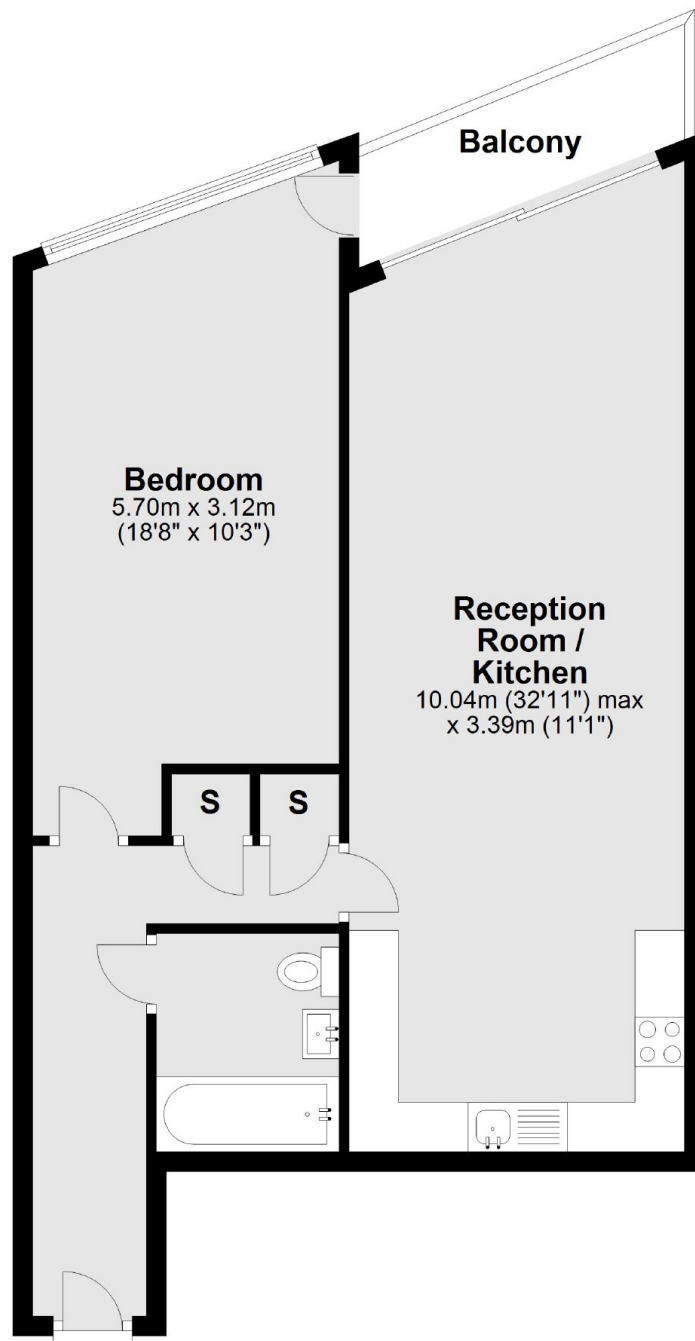
Coral Apartments are well located for the water sports, bars, and restaurants of Royal Victoria Docks including the popular China Palace.

Features

- One Bedroom
- One Bathroom
- Wooden Flooring
- Open Plan
- Concierge
- Dockside

Western Gateway, London, E16

Ninth Floor



Total area: approx. 63.8 sq. metres (686.9 sq. feet)

Dexters

Canary Wharf
39 Westferry Road
London
E14 8JH
Lettings
0207 517 1190

Energy Rating: C. We aim to make our particulars both accurate and reliable. However they are not guaranteed; nor do they form part of an offer or contract. If you require clarification on any points then please contact us, especially if you're traveling some distance to view. Please note that appliances and heating systems have not been tested and therefore no warranties can be given as to their good working order.

 **RICS** | Regulated
Estate Agent
and Letting Agent

[dexters.co.uk](https://www.dexters.co.uk)