



Lancaster Street, SE1

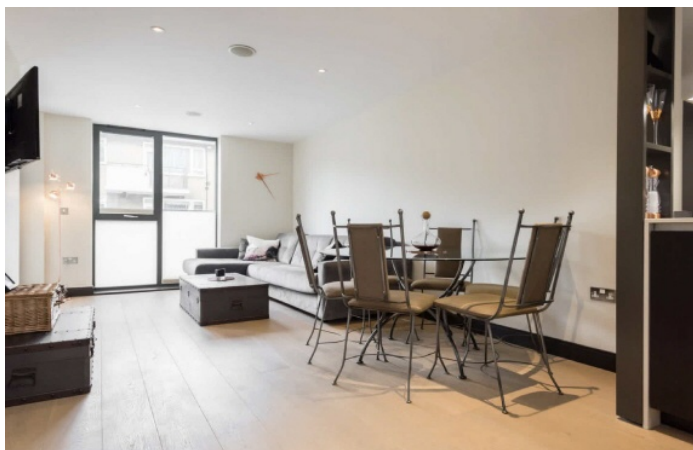
£535,000

A beautifully designed, high-specification, one-bedroom apartment set within the award-winning Chroma Buildings development, offering a rare walk-in wardrobe, private balcony and exceptional attention to detail throughout. Sold chain free and also benefiting from a fantastic communal roof terrace. Offers in excess of £535,000.

Zeiss Court is very well located, on Lancaster Street, tucked back off Blackfriars Road, perfectly situated for a multitude of food markets and transport links including Waterloo, Southwark & London Bridge. It is a real entertainment & cultural hub.

Features

Boutique 2016 Development
Separate Walk-in Wardrobe
Integrated Ceiling Speakers
Separate Utility Cupboard
Dual Access Private Balcony
Secure Entry & Bike Storage
Communal Roof Terrace
999-year Lease From New



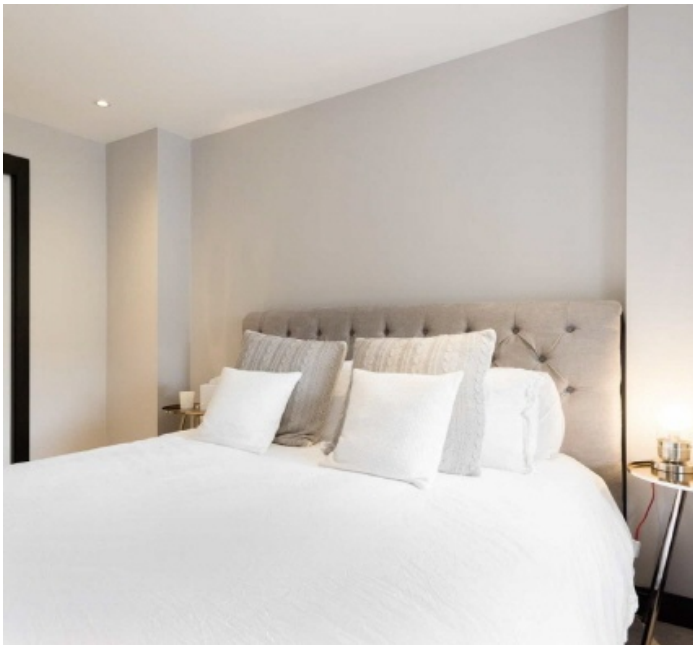
Lancaster Street, SE1

This thoughtfully designed apartment offers over 560 sq ft of elegant internal space, finished to a standard rarely found in modern one-bedroom homes, with floor to ceiling windows, an integrated sound system and under floor heating throughout.

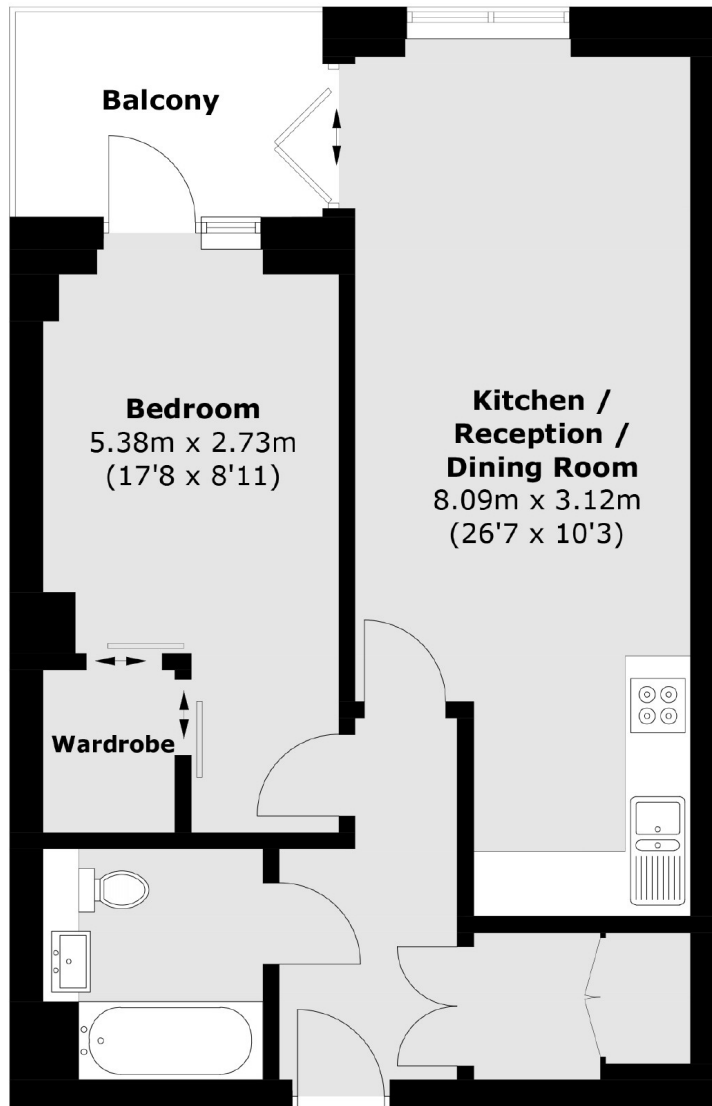
The open-plan kitchen, living and dining area is flooded with natural light and opens directly onto a private balcony, creating a seamless connection between indoor and outdoor living.

The bedroom benefits from a large walk-in wardrobe/dressing room, with extensive hanging space and shelving. The bathroom is finished in a modern, spa-style design with high-quality fittings and generous storage.

Completed in January 2016 this is an award winning development built by Fabrica. Each apartment benefits from a long lease of 999 years from new. It is a small scale development with secure entry, bike storage, a communal roof terrace and a genuine community feel.



Lancaster Street, London, SE1



First Floor

Total area (approx.): 52.2 sq. m (561.8 sq. ft)

Balcony area: 5.3 sq. m (57.0 sq. ft)