



## Chicheley Street, SE1

£1,180,000

A very rarely available, almost 1,300 sq ft 5th floor apartment with views of the London Eye, a very spacious entrance hall, a large living room and separate kitchen, three double bedrooms, three bathrooms and ample storage. Sold with a Share of Freehold, two allocated parking spaces and a very large external storage cupboard.

County Hall is one of Waterloo's most iconic developments, perfectly positioned on the vibrant South Bank. Residents are just moments from the London Eye, the River Thames, and Waterloo Station, with an abundance of cultural attractions, restaurants, and amenities on the doorstep.

### Features

- Views of the London Eye
- Almost 1,300 Sq Ft
- Two Allocated Parking Spaces
- Large External Storage
- Residents' Gym
- 24 Hour Concierge
- Chain Free Sale



## Chicheley Street, SE1

This exceptional apartment is one of the largest within County Hall, boasting a rare triple aspect with stunning views of the London Eye and the River Thames. A wonderful sense of light and space flows throughout, from the impressive entrance hall to the 28 ft living room.

The main reception is the heart of the home, with a striking feature window framing the views, ample space for both dining and relaxation, and an elegant fireplace as a focal point.

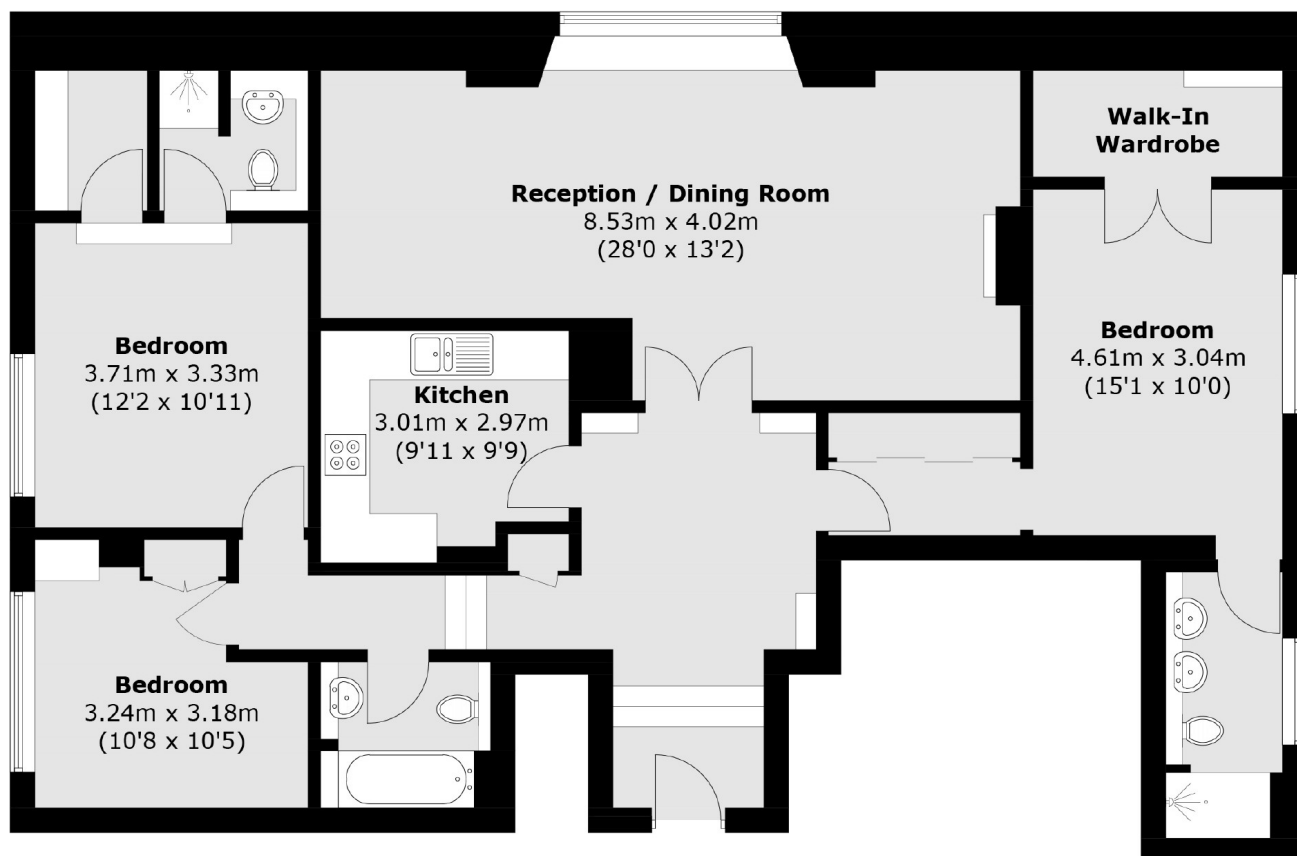
There are three generous double bedrooms. The two principal bedrooms each benefit from en-suite bathrooms and walk-in wardrobes, while the third bedroom is well served by a guest bathroom accessed from the hallway.

Additional highlights include two secure underground parking spaces and a particularly large private storage room at basement level. Residents also enjoy 24-hour concierge service, a swimming pool, and a fully equipped gym.





# Chicheley Street, London, SE1



Total area (approx.): 120.3 sq. m (1,294.9 sq. ft)