



Southwark Bridge Road, SE1

£1,750,000

A substantial Victorian family home, split over four storeys, with a generous double reception room on the raised ground floor, along with a fully fitted modern kitchen, two further reception rooms on the lower floor, a large rear garden and out-building, plus five double bedrooms, two bathrooms and a wonderful top floor roof terrace.

Located in the heart of SE1, just moments from Borough, London Bridge, and Southwark stations. Nearby highlights include Borough Market, the Southbank, and Flat Iron Square, providing a vibrant mix of food, drink, and culture on your doorstep.

Features

- Victorian Freehold House
- Over 2,000 sq ft
- Five/Six Bedrooms
- Four Storeys
- Roof Terrace
- Large Rear Garden
- Additional Out-Building
- Chain free sale



Southwark Bridge Road, SE1

This impressive home spans over 2,100 sq ft of flexible living space in the heart of Zone 1. Behind its elegant facade lies a thoughtfully arranged interior spread across five floors, perfectly blending period character with modern style.

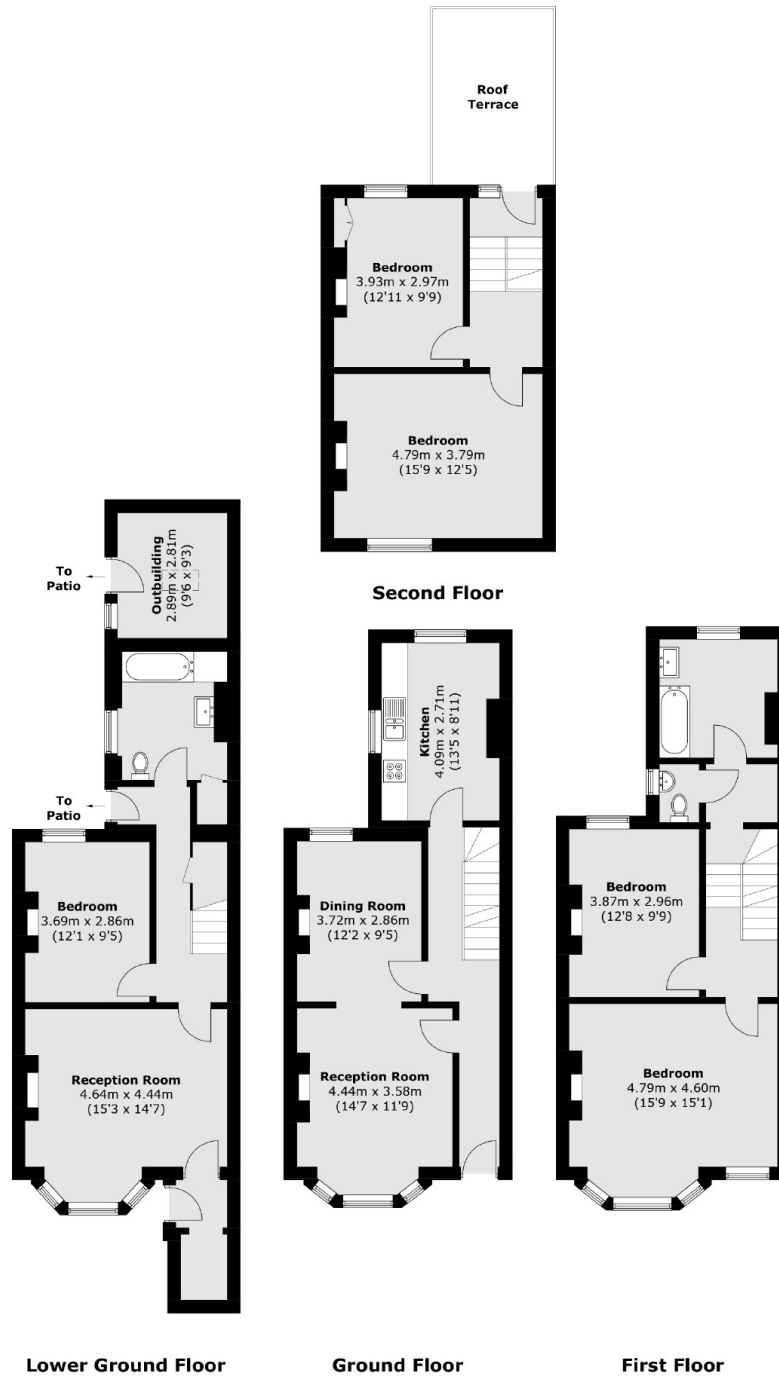
The raised ground floor showcases a grand double reception room with a striking bay-fronted window, complemented by a sleek, contemporary kitchen, ideal for both everyday living and entertaining. Upstairs, the principal bedroom enjoys soaring ceilings, joined by a second bedroom and a stylish bathroom with a separate WC.

The top floor offers two further bedrooms and access to a private roof terrace, providing a peaceful outdoor escape. The lower ground floor adds versatility, currently set up with two bedrooms and a bathroom, and offering potential as a self-contained apartment or guest suite.

A private garden extends to a heated, powered annex, perfect for a studio, office, or gym. With Great Suffolk Street just 0.1 miles away and the Old Vic Theatre only 0.4 miles from your door, this is refined city living surrounded by culture, dining, and energy.



Southwark Bridge Road, London, SE1



Approx Internal Area: 187.7 sq. m (2,020.3 sq. ft)
 Outbuilding: 7.4 sq. m (79.6 sq. ft)
 Total: 195.1 sq. m (2,099.9 sq. ft)
 Roof Terrace: 11.2 sq. m (120.5 sq. ft)