



Bowling Green Place, SE1

£700,000

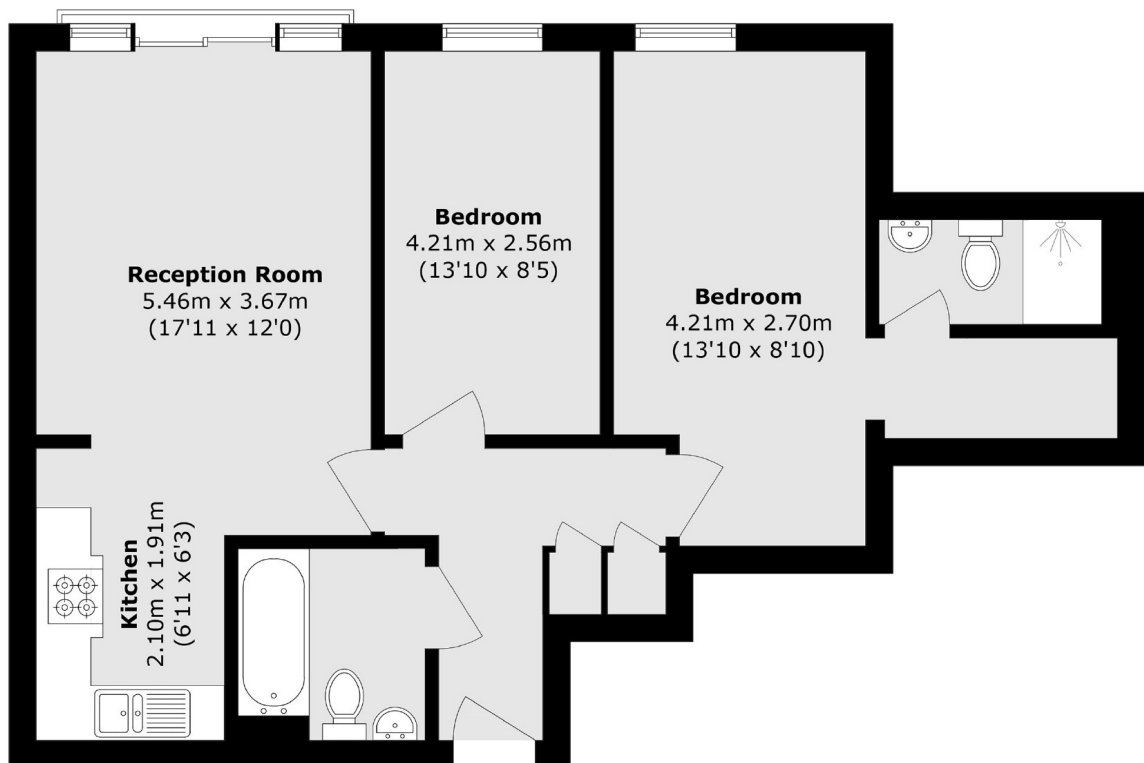
An immaculately presented, west-facing apartment on the third-floor, with a bright and expansive open-plan living room and kitchen, perfect for entertaining. It offers two generously sized double bedrooms, two modern bathrooms, and plentiful storage. Enjoy peaceful communal gardens, secure off-street parking, and the added security of a share of freehold - all in a vibrant, sought-after location.

Bowling Green Place is perfectly situated in the heart of SE1. Step outside and you're immersed in one of London's most dynamic areas: wander through the bustling stalls of Borough Market, enjoy riverside strolls along the South Bank, or take in panoramic views from The Shard. Independent Cafés, artisan bakeries, and historic pubs line the nearby streets, along with an eclectic theatre and creative scene.

Features

- Very Central Location
- Two Double Bedrooms
- Two Bathrooms
- Lift Access & Secure Entry
- Communal Garden
- Secure Allocated Parking
- Hyperoptic Broadband
- Chain Free Sale

Bowling Green Place, London, SE1



Total area (approx.): 368.9 sq. m (741.6 sq. ft)

Dexters

London Bridge
54 Borough High Street
London
SE1 1XL
Sales
020 7650 5 100

Energy Rating: . We aim to make our particulars both accurate and reliable. However they are not guaranteed; nor do they form part of an offer or contract. If you require clarification on any points then please contact us, especially if you're traveling some distance to view. Please note that appliances and heating systems have not been tested and therefore no warranties can be given as to their good working order.

 **RICS** | Regulated
Estate Agent
and Letting Agent

[dexters.co.uk](https://www.dexters.co.uk)