

## Lancaster Street, SE1

### £550,000

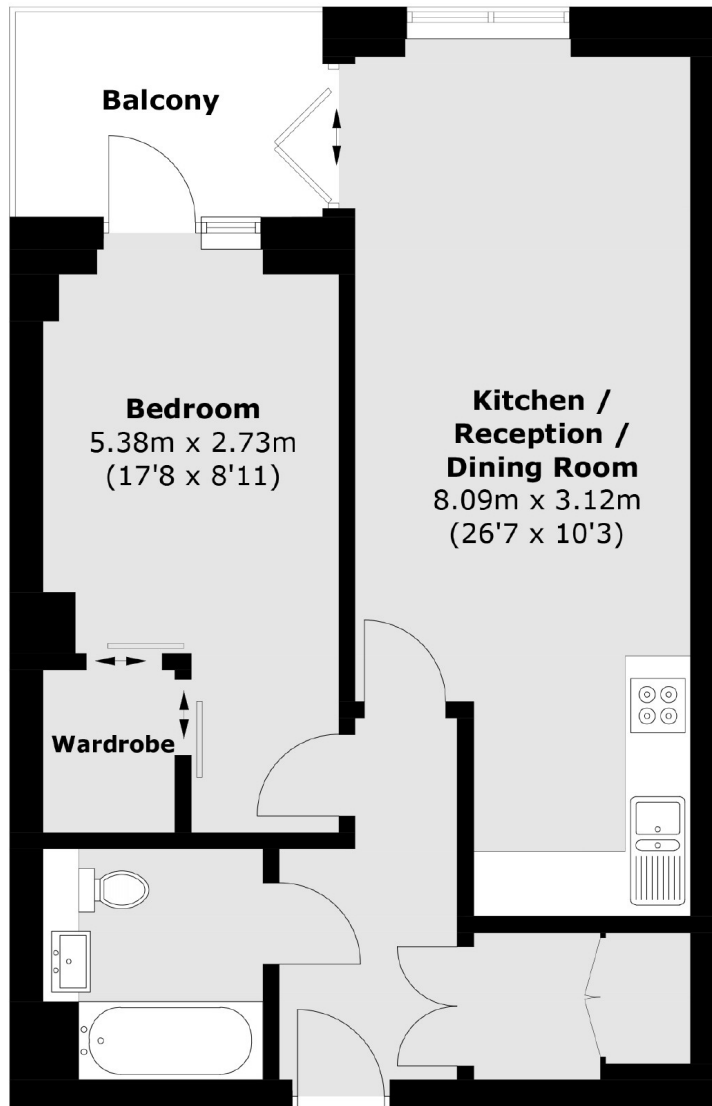
A high spec modern apartment with a spacious open plan living room and fully fitted modern kitchen, with ample room for a large dining table, a spacious modern bathroom, a utility and storage cupboard, plus a private balcony running off both the living room and the bedroom and access to a large communal roof terrace

Zeiss Court is very well located, on Lancaster Street, tucked back off Blackfriars Road, perfectly situated for a multitude of food markets and transport links including Waterloo, Southwark & London Bridge. It is a real entertainment & cultural hub.

### Features

- High Specification
- Under Floor Heating
- Open Plan Living
- Private Balcony
- Secure Entry & Bike Storage
- Communal Roof Terrace
- Long Lease

# Lancaster Street, London, SE1



## First Floor

Total area (approx.): 52.2 sq. m (561.8 sq. ft)

Balcony area: 5.3 sq. m (57.0 sq. ft)