



Lynton Road, SE1

£750,000

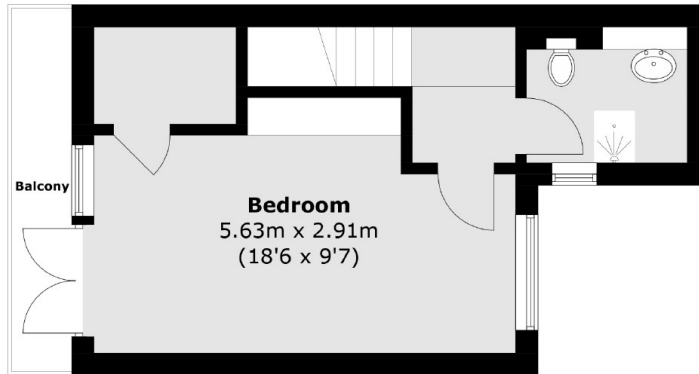
Offers in excess of £750,000. A rare opportunity to purchase a freehold property on sought-after Otterden Terrace. This beautifully arranged three-storey home offers a spacious semi-open plan kitchen and living area, three well-proportioned double bedrooms and two modern bathrooms. Enjoy outdoor living with a top floor balcony and private rear patio garden, perfect for relaxing or entertaining.

Lynton Road is a picturesque, tree-lined street, adjacent to the sought-after Thorburn Square Conservation Area. This peaceful residential setting offers a village-like atmosphere just moments from the heart of London with numerous cafés, restaurants and amenities on your doorstep. There are excellent transport links nearby, including the Jubilee Line at nearby Bermondsey & London Bridge, the Overground at London Bridge & South Bermondsey, plus frequent bus routes across the City.

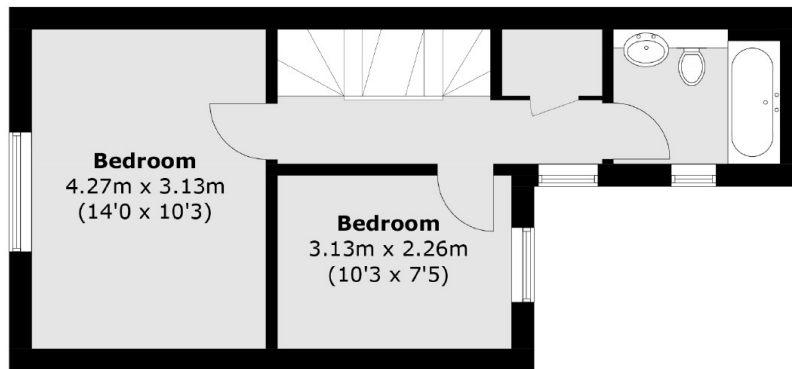
Features

Offers in excess of £750,000
 Freehold House
 Three Storeys
 Three Double Bedrooms
 Two Bathrooms
 Permit Parking Available
 Rear Patio & Roof Terrace

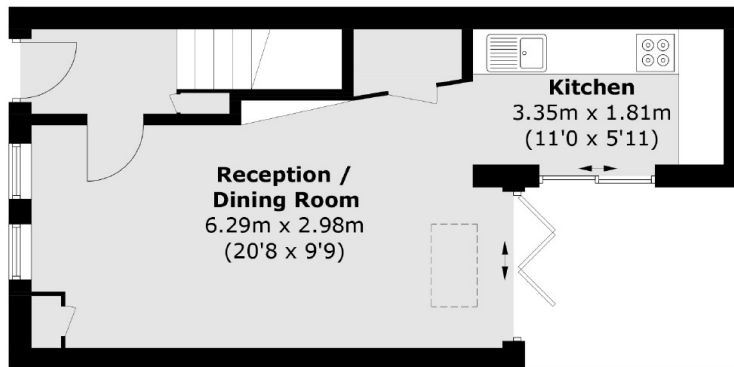
Lynton Road, London, SE1



Second Floor



First Floor



Ground Floor

Total area (approx.): 95.5 sq. m (1027.8 sq. ft)
Balcony: 3.8 sq. m (40.9 sq. ft)