



Marsh Wall, E14

£530 Per week

A large one bedroom apartment on the thirty third floor of this sought after development. This modern apartment has an open plan reception room, floor to ceiling windows and unrivalled views.

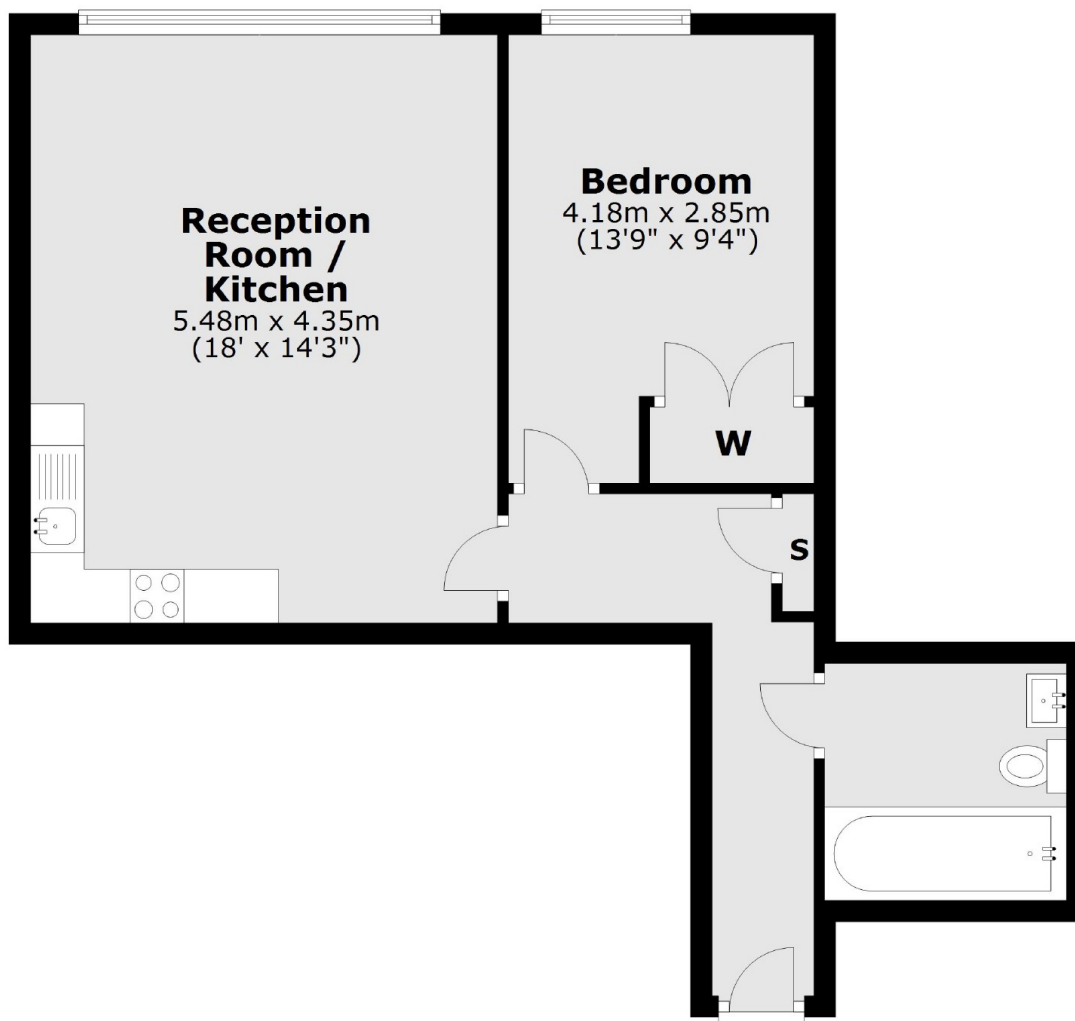
Landmark West Tower is within walking distance of the shops, bars and restaurants of Canary Wharf, including the former rum warehouse Rum and Sugar.

Features

- One Bedroom
- One Bathroom
- Thirty Third Floor
- Wooden Flooring
- Concierge
- Residents Gym

Marsh Wall, London, E14

33rd Floor



Total area: approx. 48.5 sq. metres (522.1 sq. feet)