



Southwark Bridge Road, SE1

£825,000

Occupying a prime position on the sixteenth floor, this stunning apartment offers sweeping panoramic views of the City. Finished to a high standard, the interior features elegant herringbone flooring with underfloor heating throughout. Both bedrooms are generously sized doubles.

251 Southwark Bridge Road enjoys an exceptional location, just moments from Elephant and Castle station and only 0.3 miles from Borough Station. The area boasts an array of shops, cafés, food markets, and delis, with the lively Mercato Metropolitano nearby adding to the vibrant local scene.

Features

- Exceptional Views
- 24 Hour Concierge
- Gym & Cinema Room
- Two Double Bedrooms
- Two Bathrooms
- Air Conditioning
- Winter Garden
- 16th Floor Apartment
- EWS1 - A2 Rating



Southwark Bridge Road, SE1

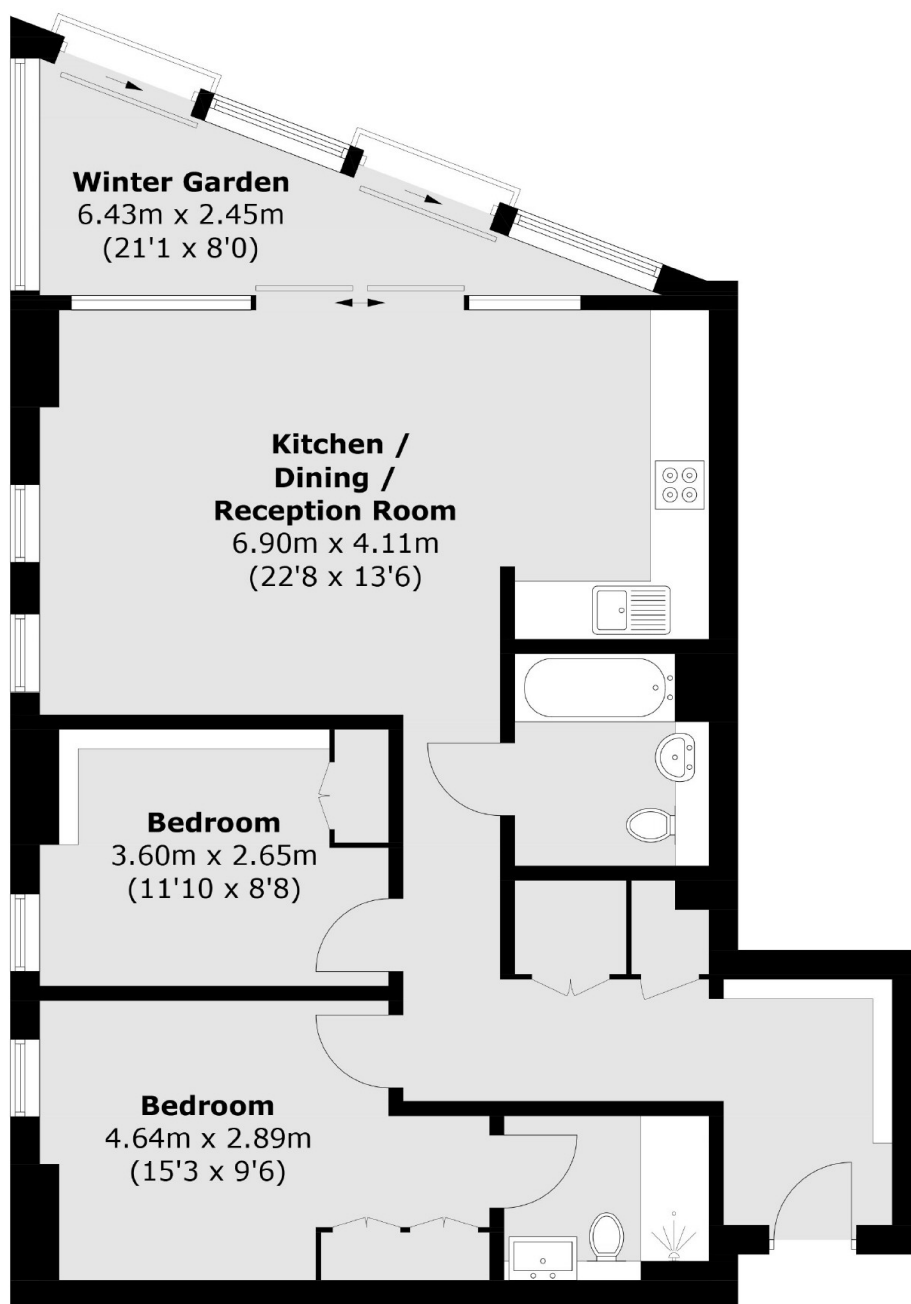
The principal bedroom benefits from a stylish en-suite shower room, while a contemporary family bathroom is conveniently located off the hallway. The sleek, modern kitchen is fully integrated with high-quality appliances. Additional upgrades include air conditioning throughout, a water softener, and a filtered water tap. Herringbone wooden flooring runs throughout the apartment, enhancing the clean and modern design.

The large winter garden compliments the living space, and additional built-in storage in the hallway adds to the apartment's practicality. Bespoke fitted bookcases in the entrance hall and study/bedroom provide both function and charm, and ash shutters in each room, add the finishing touches. Lighting and power points have also been thoughtfully upgraded.

Residents of Two Fifty One enjoy access to a range of premium amenities, including a 24-hour concierge, a private gym with thermal suite, a cinema room, and a business and entertainment lounge. The development is dog-friendly and also offers secure underground bicycle storage.



Southwark Bridge Road, London, SE1



Total area (approx.): 83.4 sq. m (897.7 sq. ft)

Dexters

London Bridge
54 Borough High Street
London
SE1 1XL
Sales
020 7650 5 100

Energy Rating: B. We aim to make our particulars both accurate and reliable. However they are not guaranteed; nor do they form part of an offer or contract. If you require clarification on any points then please contact us, especially if you're traveling some distance to view. Please note that appliances and heating systems have not been tested and therefore no warranties can be given as to their good working order.

 **RICS** | Regulated
Estate Agent
and Letting Agent

dexters.co.uk