



Long Lane, SE1

£775,000

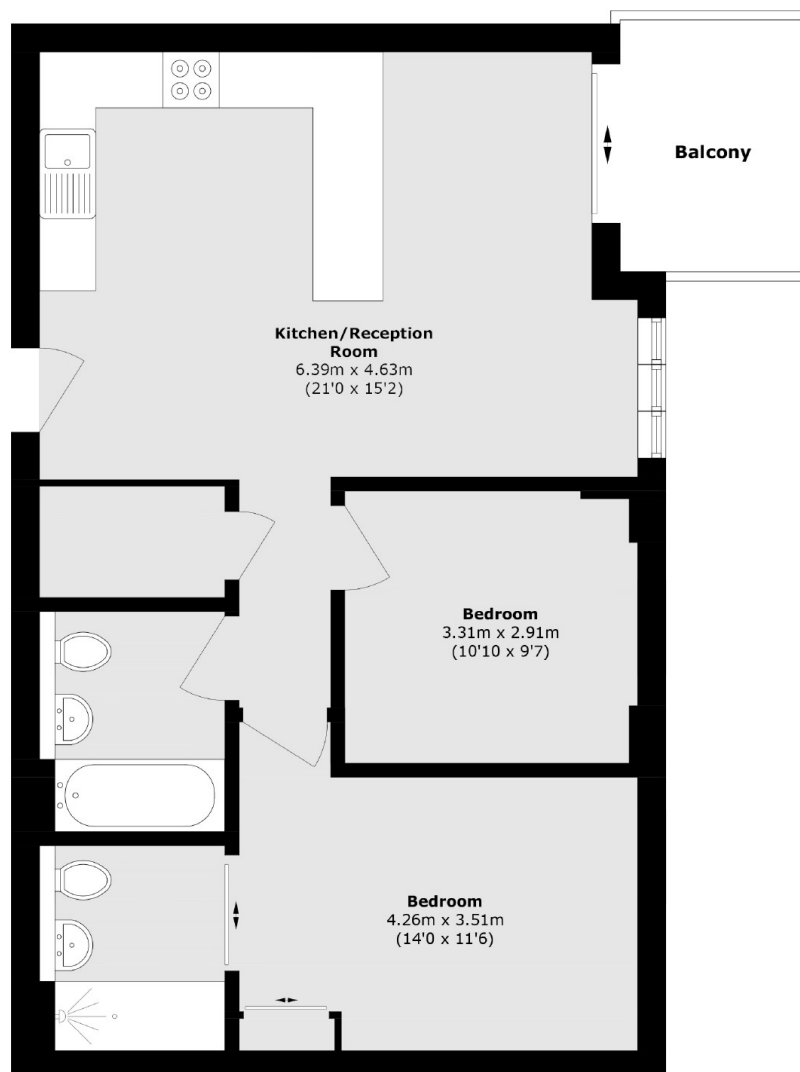
An attractive south-facing apartment on the 5th floor, with an abundance of natural light throughout the open plan living room and kitchen, a large south-facing balcony, two double bedrooms, two bathrooms and ample built-in storage.

The Taper Building is ideally located in the heart of SE1, just moments from London Bridge Station. With Bermondsey Street, Borough Market, and the Southbank right on your doorstep, you're surrounded by a vibrant mix of attractions, cafés, restaurants, galleries, and local amenities.

Features

- On-Site Concierge
- Residents' Gym
- Two Double Bedrooms
- Two Bathrooms
- Open Plan Living Space
- South-Facing Balcony
- Bike Storage

Long Lane, London, SE1



Total area (approx.): 66.8 sq. m (719.0 sq. ft)

Balcony area (approx.): 5.1 sq. m (54.8 sq. ft)

Dexters

London Bridge
54 Borough High Street
London
SE1 1XL
Sales
020 7650 5 100

Energy Rating: B. We aim to make our particulars both accurate and reliable. However they are not guaranteed; nor do they form part of an offer or contract. If you require clarification on any points then please contact us, especially if you're traveling some distance to view. Please note that appliances and heating systems have not been tested and therefore no warranties can be given as to their good working order.

 **RICS** | Regulated
Estate Agent
and Letting Agent

[dexters.co.uk](https://www.dexters.co.uk)