



## Coopers Road, SE1

### £340,000

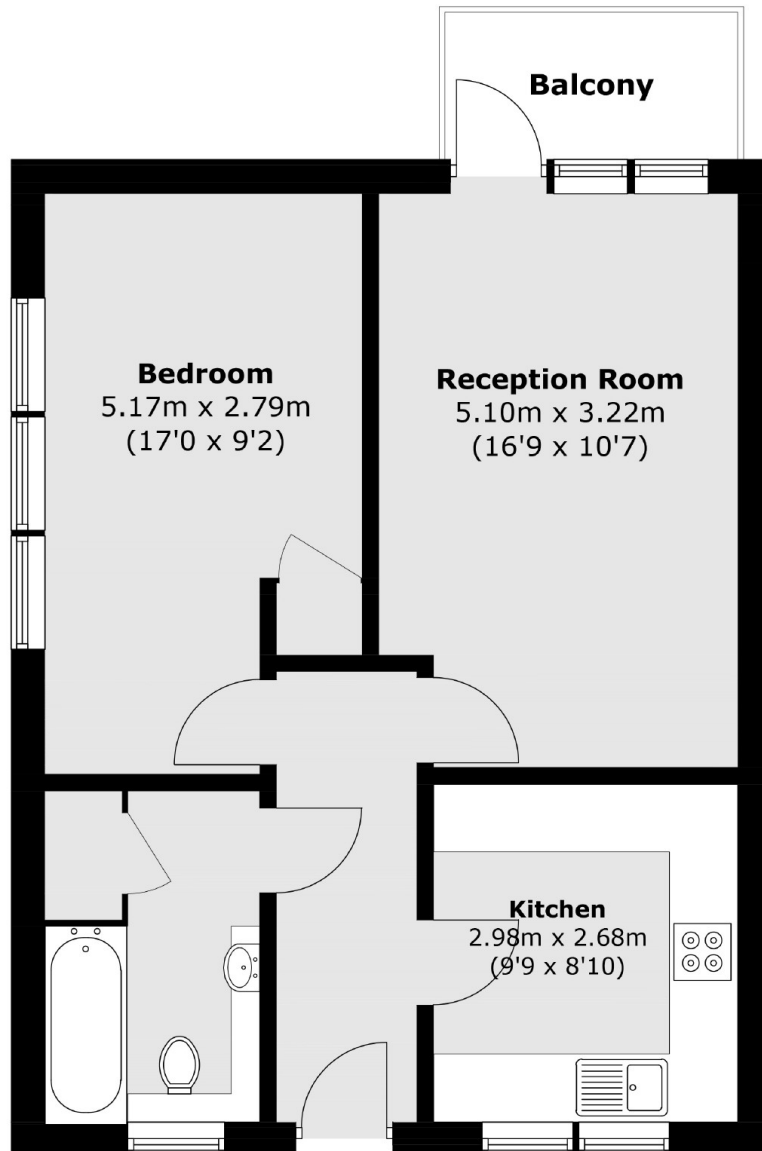
An attractive modern apartment, built in 2008, with a large fully fitted kitchen, separate living room, with a private west-facing balcony, generous double bedroom, ample storage and a three piece bathroom.

Coopers Road is set just back off the Old Kent Road, with its numerous amenities. Burgess Park is a few moments away with great links via Elephant & Castle, Bermondsey & South Bermondsey, plus numerous major bus routes.

### Features

- Second Floor Flat
- Secure Entry
- Private Balcony
- Communal Courtyard
- Long Lease - 111 Years
- Chain Free Sale

# Coopers Road, London, SE1



Total area (approx.): 50.0 sq. m (538.2 sq. ft)

Balcony area (approx.): 3.4 sq. m (36.6 sq. ft)

## Dexters

London Bridge  
54 Borough High Street  
London  
SE1 1XL  
Sales  
020 7650 5 100

Energy Rating: B. We aim to make our particulars both accurate and reliable. However they are not guaranteed; nor do they form part of an offer or contract. If you require clarification on any points then please contact us, especially if you're traveling some distance to view. Please note that appliances and heating systems have not been tested and therefore no warranties can be given as to their good working order.

 **RICS** | Regulated  
Estate Agent  
and Letting Agent

[dexters.co.uk](https://www.dexters.co.uk)