



Rothsay Street, SE1

£380,000

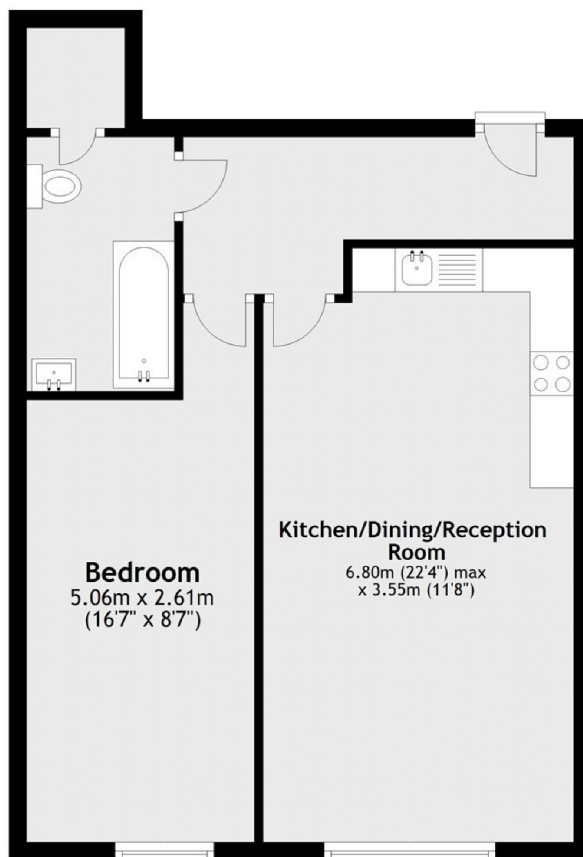
A highly attractive, west-facing, modern apartment with a spacious open plan living room and kitchen, allowing plenty of space for a large dining table and separate seating area, a generous double bedroom, ample storage and a three piece bathroom. Benefitting from secure entry, step-free access and a 24 hour concierge.

The Jam Factory is one of SE1's most desirable developments, set on Green Walk, moments from Bermondsey Street, with London Bridge, Borough Market & the Southbank just beyond.

Features

- Modern Apartment
- West-facing
- One Double Bedroom
- Open Plan Living Space
- Ample Storage
- 24 Hour Concierge
- Excellent Transport Links

Rothsay Street, London, SE1



Total area: approx. 51.9 sq. metres (558.9 sq. feet)