



## Rotherhithe Street, SE16

### £495,000

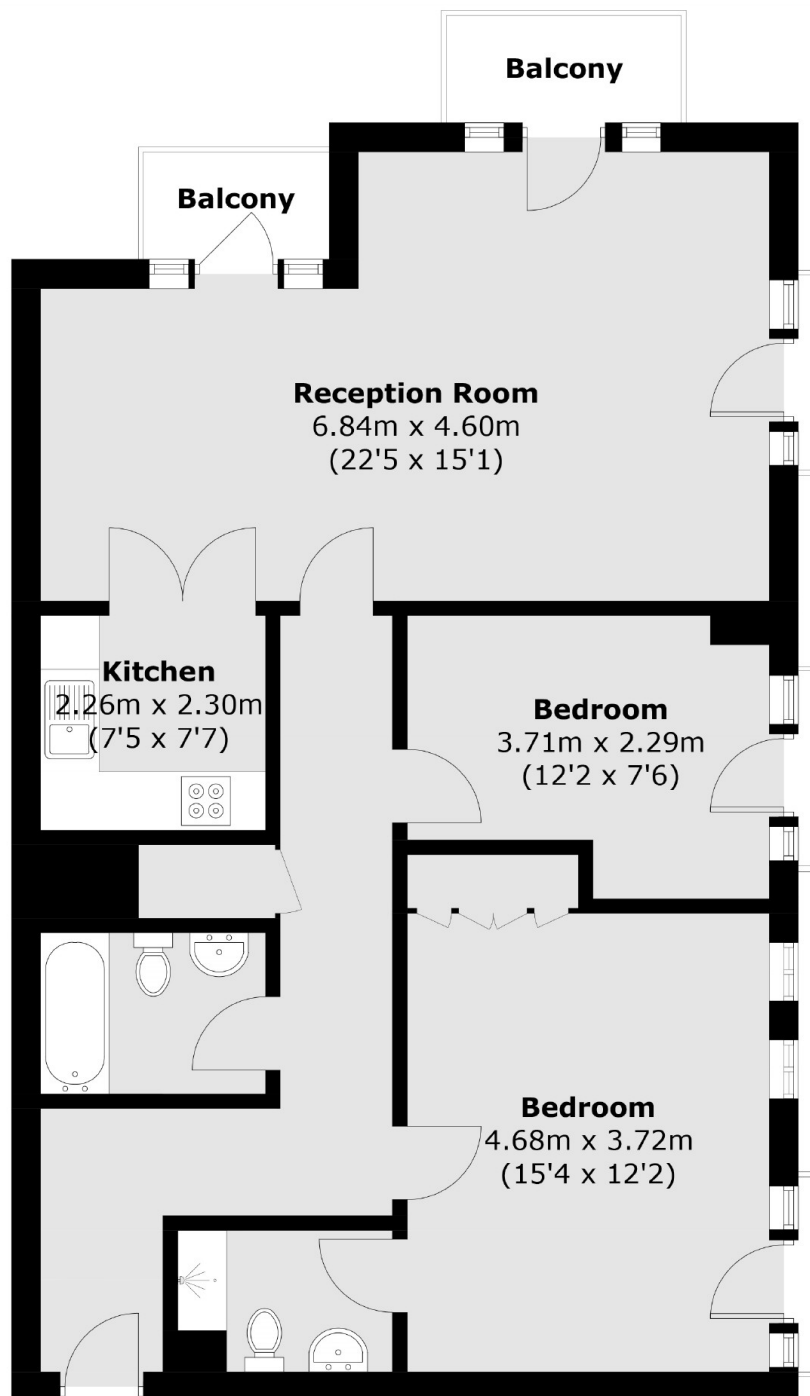
Located in this sought after riverside development, this two double bedroom flat offers almost 1,000sqft on living space and has two bathrooms, large living space, two balconies, allocated parking space and river views.

Located on the banks of the River Thames, the property provides excellent transport links with nearby stations at both Canada Water (Jubilee Line) and Rotherhithe (London Overground). Hilton Pier is also nearby offering regular river bus services to Canary Wharf.

### Features

- Two Bedrooms
- Two Bathrooms
- Swimming Pool & Jacuzzi
- Secure Underground Parking
- Two Balconies
- Share of Freehold
- 24 hr Concierge
- Loft Storage

# Rotherhithe Street, London, SE16



Total area (approx.): 89.3 sq. m (961.2 sq. ft)  
Balcony : 4.7 sq. m (50.6 sq. ft)

## Dexters

London Bridge  
54 Borough High Street  
London  
SE1 1XL  
Sales  
020 7650 5 100

Energy Rating: E. We aim to make our particulars both accurate and reliable. However they are not guaranteed; nor do they form part of an offer or contract. If you require clarification on any points then please contact us, especially if you're traveling some distance to view. Please note that appliances and heating systems have not been tested and therefore no warranties can be given as to their good working order.

 **RICS** | Regulated  
Estate Agent  
and Letting Agent

[dexters.co.uk](https://www.dexters.co.uk)