



Duchess Walk, SE1

£2,050,000

Offering views of Tower Bridge, this stunning three bedroom, three bathroom apartment is immaculately presented and boasts two balconies, an open plan kitchen/ living room, plus secure underground parking.

Surrounded by excellent restaurants cafés and delis, the development is directly facing Tower Bridge, The River and The City skyline. London Bridge station is only 0.2 miles away providing excellent transport links.

Features

- Three Bedrooms
- Three Bathrooms
- Two Balconies
- Concierge
- Spa - Gym - Pool
- Underground Parking



Duchess Walk, SE1

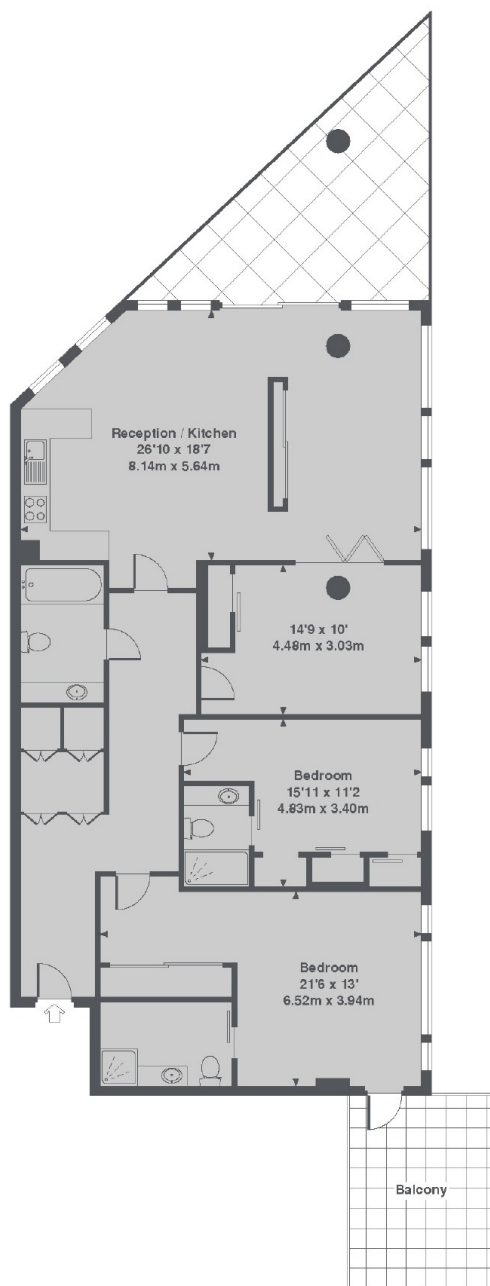
Situated in Tudor House, this stunning apartment offers ample living space with a state of the art kitchen and a private balcony offering direct views of Tower Bridge and the Thames.

All three bedrooms are in fantastic condition and all bathrooms are modern and luxurious. The flat offers ample storage and boasts remote control lights, blinds and comfort cooling and underfloor heating.

The riverside development offers 24 hour concierge, state of the art gym, swimming pool and spa facilities and beautiful communal areas.



Duchess Walk, London, SE1



Tudor House, Dutches Walk, SE1
Total Approx. Floor area 1325 Sq. Ft. (123.1 Sq. M.)

Dexters

Limehouse
558 Commercial Road
London
E14 7JD
Sales
020 7790 9832

Energy Rating: B. We aim to make our particulars both accurate and reliable. However they are not guaranteed; nor do they form part of an offer or contract. If you require clarification on any points then please contact us, especially if you're traveling some distance to view. Please note that appliances and heating systems have not been tested and therefore no warranties can be given as to their good working order.

 **RICS** | Regulated
Estate Agent
and Letting Agent

[dexters.co.uk](https://www.dexters.co.uk)