



Wolfe Crescent, SE16

£375,000

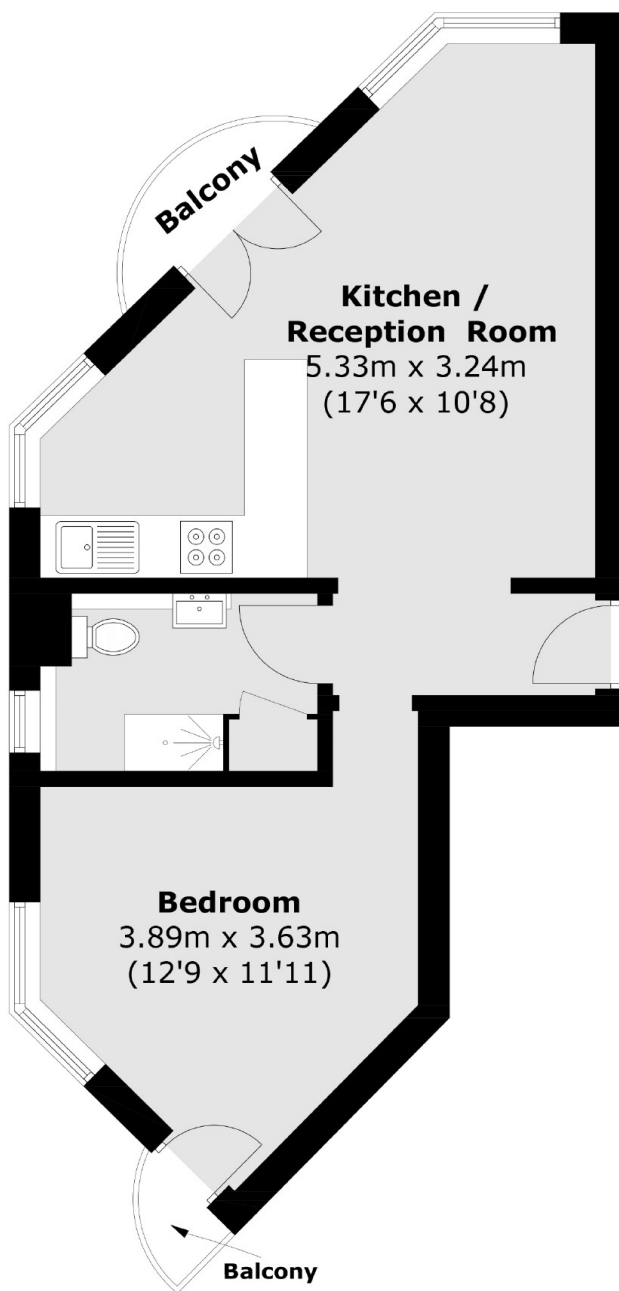
Located moments from Canada Water station, this one double bedroom flat has been fully refurbished and boasts a large open plan kitchen/ living space, private balcony and private parking.

Monkton House is located only 0.3 miles from Canada Water station offering fantastic transport links. A wide range of shops and restaurants are moments away.

Features

- One Double Bedroom
- Top Floor
- Contemporary Style
- Private Balcony
- Communal Gardens
- Allocated Private Parking
- Waterside Location
- Offers Over £375,000

Wolfe Crescent, London, SE16



Total area (approx.): 40.4 sq. m (434.8 sq. ft)
Balcony area : 1.9 sq. m (20.4 sq. ft)

Dexters

Canada Water
Montreal House
Surrey Quays Road
London
Sales
020 7650 5144

Energy Rating: TBC. We aim to make our particulars both accurate and reliable. However they are not guaranteed; nor do they form part of an offer or contract. If you require clarification on any points then please contact us, especially if you're traveling some distance to view. Please note that appliances and heating systems have not been tested and therefore no warranties can be given as to their good working order.

 **RICS** | Regulated
Estate Agent
and Letting Agent

dexters.co.uk