



Rotherhithe Street, SE16

£550,000

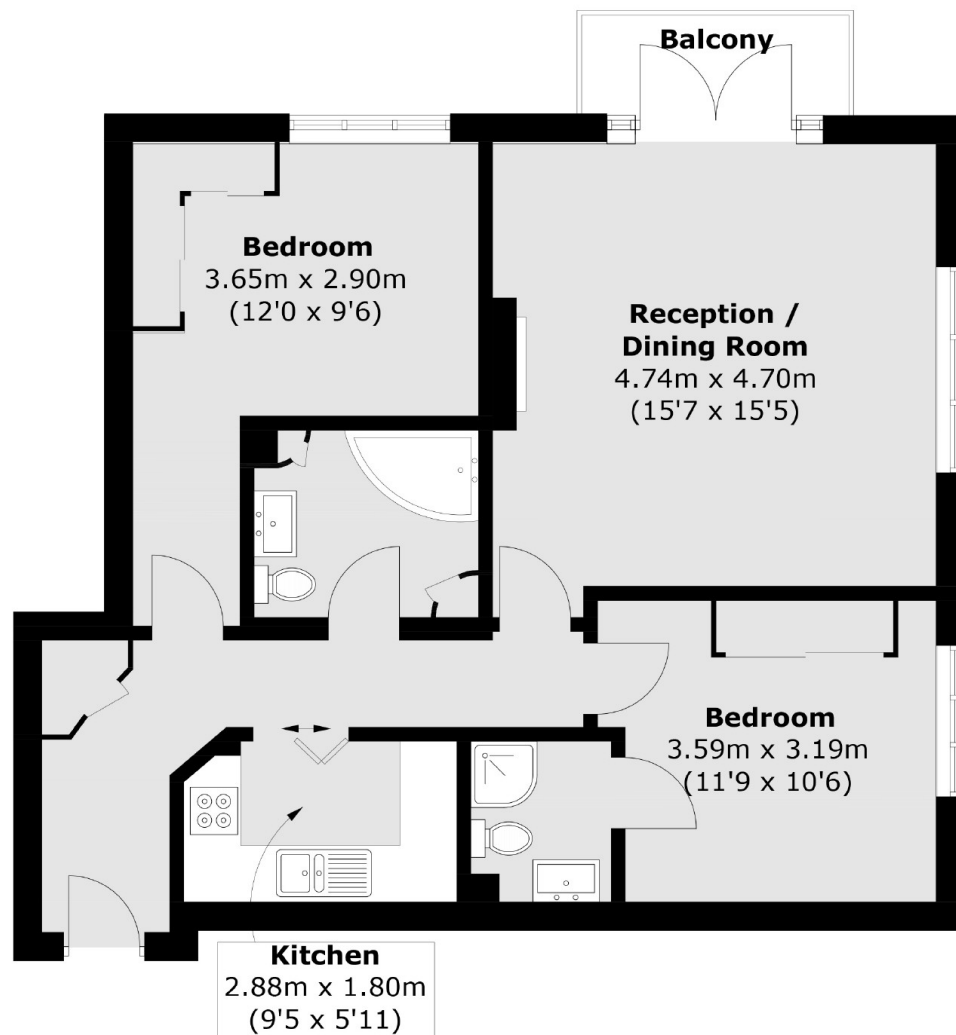
Offering stunning views of the river and The City, this two double bedroom flat is immaculately presented and boasts a large living space, modern kitchen, private balcony directly on the riverfront, two bathrooms and gated parking.

Leeside Court is located only 0.5 miles from Rotherhithe station and 0.7 miles from Canada Water station. An abundance of riverside pubs, shops and restaurants are all close by.

Features

- Two Double Bedrooms
- Two Bathrooms
- River Views
- Share of Freehold
- Gated Development
- Parking
- Concierge Facilities

Rotherhithe Street, London, SE16



Total area (approx.): 71.5 sq. m (769.6 sq. ft)
Balcony area : 2.9 sq. m (31.2 sq. ft)