



## King & Queen Wharf, SE16

£535,000

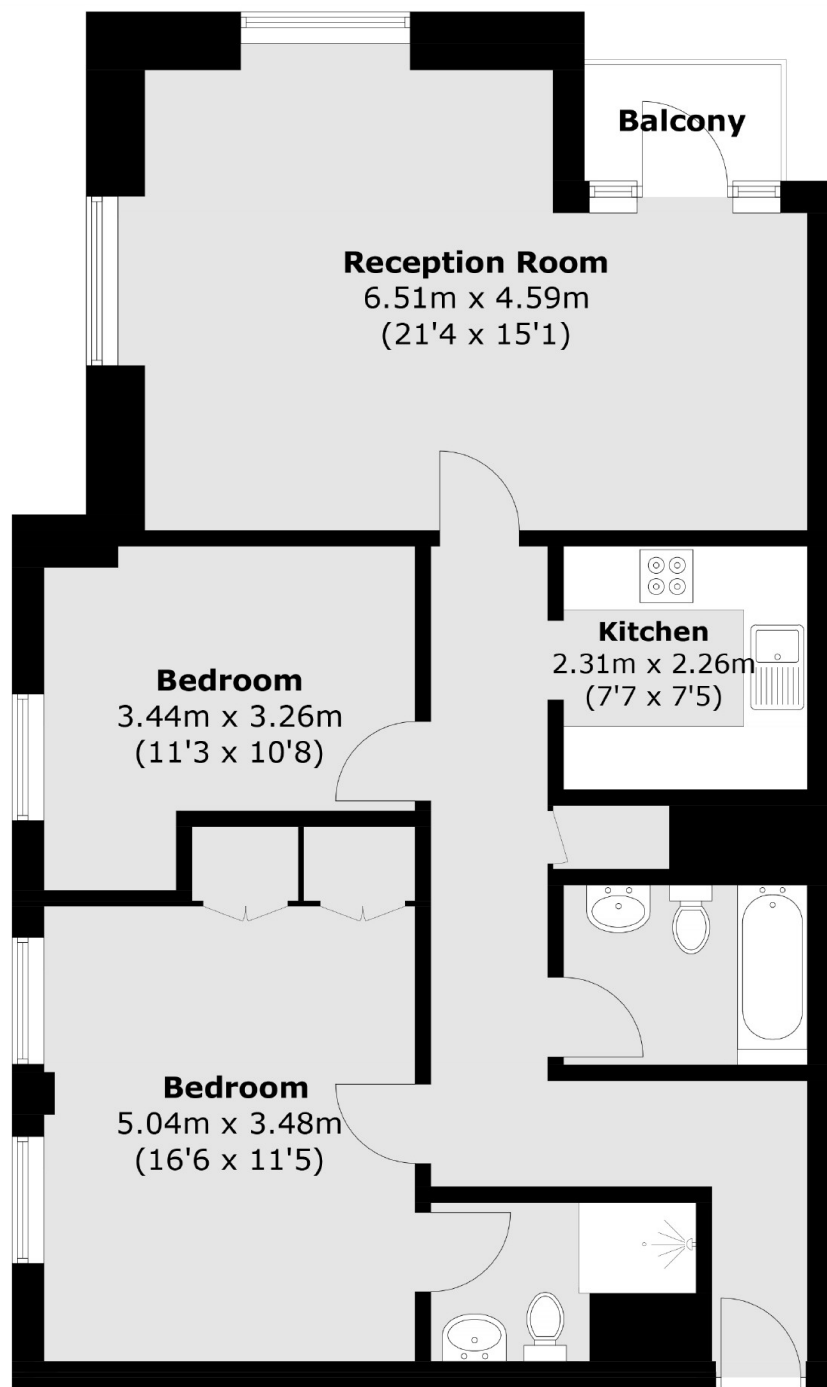
A highly sought after riverside apartment with river views, a private balcony, two double bedrooms, two bathrooms, a spacious living room and a separate kitchen, plus secure parking, resident's porter and leisure facilities.

King and Queen Wharf is 0.6 miles from Rotherhithe Station and 0.8 miles from Canada Water station. The flat offers excellent transport links to the rest of London. A number of attractions, riverside pubs and restaurants are also close by.

### Features

- River Views
- Private Balcony
- Two Bedrooms & Two Bathrooms
- Residents' Porter & Pool
- Secure Parking

# King & Queen Wharf, London, SE16



Total area (approx.): 82.7 sq. m (890.1 sq. ft)  
Balcony area (approx.): 2.0 sq. m (21.5 sq. ft)

## Dexters

London Bridge  
54 Borough High Street  
London  
SE1 1XL  
Sales  
020 7650 5 100

Energy Rating: C. We aim to make our particulars both accurate and reliable. However they are not guaranteed; nor do they form part of an offer or contract. If you require clarification on any points then please contact us, especially if you're traveling some distance to view. Please note that appliances and heating systems have not been tested and therefore no warranties can be given as to their good working order.

 **RICS** | Regulated  
Estate Agent  
and Letting Agent

[dexters.co.uk](https://www.dexters.co.uk)