



## Narrow Street, E14

£530 Per week

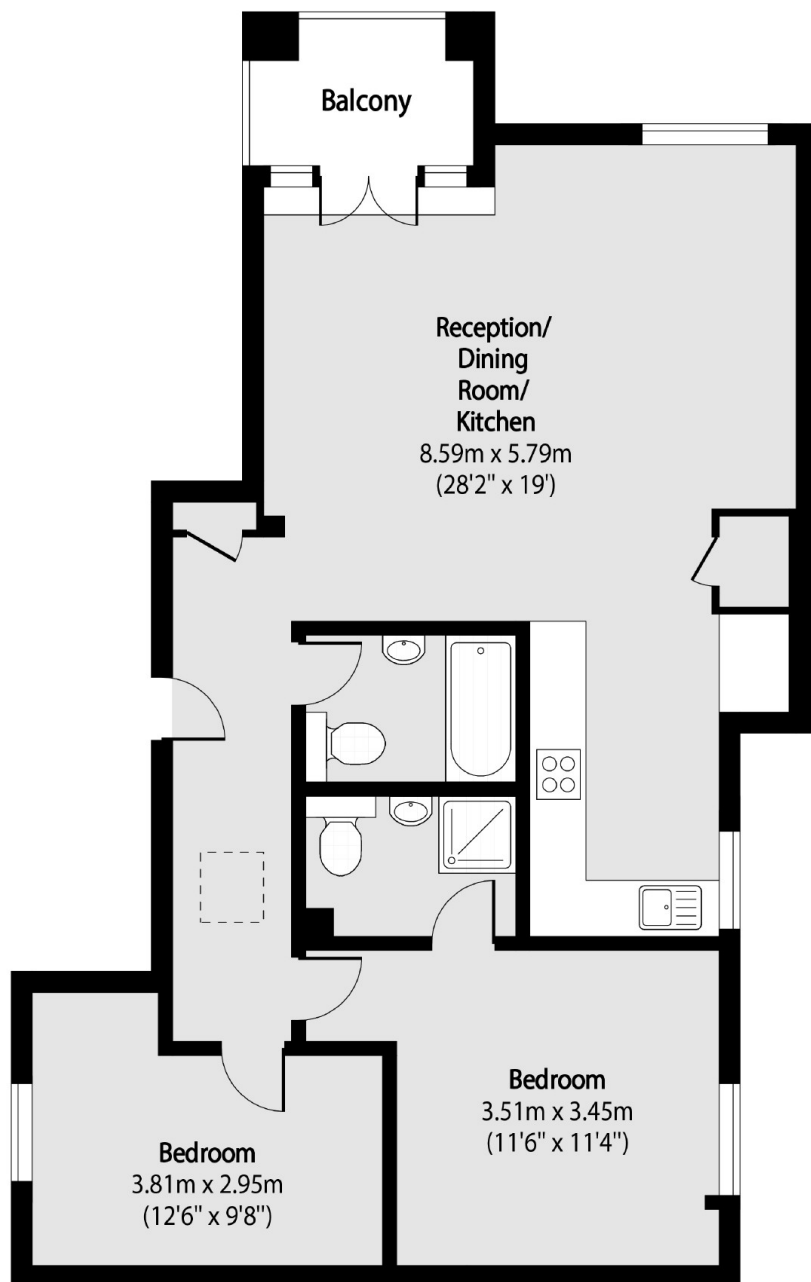
Two bedroom apartment located on the first floor of Eagle Wharf in Limehouse, London E14. Comprises 2 bedrooms, 2 bathrooms, reception/dining room, kitchen, south facing balcony and private parking.

Eagle Wharf is situated within 0.2 miles of Limehouse Station (DLR and C2C National Rail) and sits a few yards from the Thames Path and Cycle Super Highway.

### Features

- Two Bedrooms
- Two Bathrooms
- River Facing
- Balcony
- Unfurnished
- Excellent Location

# Narrow Street, London, E14



Total area (approx): 77.02 sq m (829 sq. ft)

Balcony total area (approx): 3.53 sq m (38 sq. ft)

## Dexters

Wapping  
123 Wapping High Street  
London  
E1W 3NX  
Lettings  
020 7650 5351

Energy Rating: C. We aim to make our particulars both accurate and reliable. However they are not guaranteed; nor do they form part of an offer or contract. If you require clarification on any points then please contact us, especially if you're traveling some distance to view. Please note that appliances and heating systems have not been tested and therefore no warranties can be given as to their good working order.

 **RICS** | Regulated  
Estate Agent  
and Letting Agent

[dexters.co.uk](https://www.dexters.co.uk)