



Marcia Road, SE1

£875,000

A highly attractive, four double bedroom, mid-terrace, freehold house, split over three floors, with a large double reception room and a separate kitchen, two bathrooms, a very generous principal suite and an unconverted loft. Plus a further downstairs WC and a private rear garden.

Marcia Road is tucked away off the Old Kent Road, in close proximity to the proposed Bakerloo Line extension, Burgess Park and numerous local amenities. Bermondsey and Elephant & Castle are both nearby.

Features

- Freehold House
- Four Double Bedrooms
- Three Storeys
- Two Bathrooms
- Additional WC
- Air Conditioning
- Private Rear Garden
- Permit Parking Available



Marcia Road, SE1

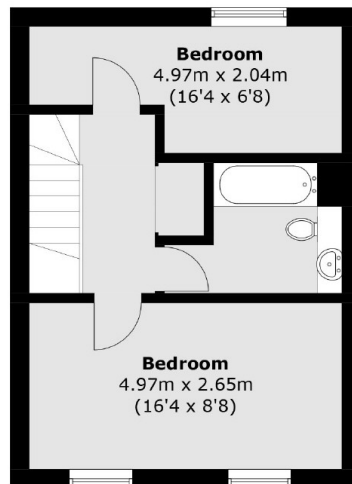
The main living space occupies the ground floor, from front to back, with an attractive bay window to the front, ample space for dining, plus a separate kitchen to the back. There is a private garden to the rear, access via both the living room and kitchen.

All four bedrooms are good sizes, with ample space for storage, served by a family bathroom, and an additional en-suite bathroom, whilst there is an further WC on the ground floor. The master bedroom benefits from a large walk-in wardrobe, leading through to the en-suite bathroom.

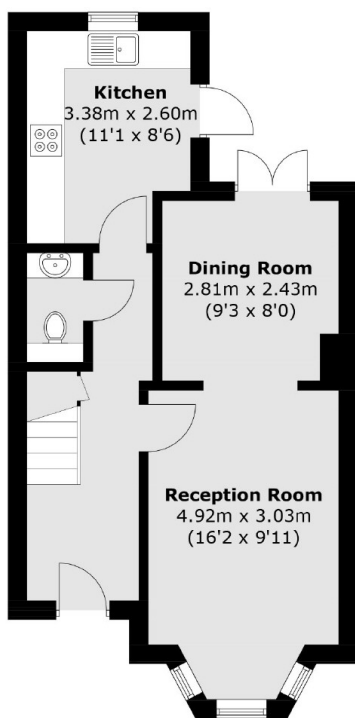
Spread over almost 1,300 sq ft, this is a substantial, three storey, family home, yet retaining significant extension potential both into the loft and to the rear of the property. There is existing precedent along the road.



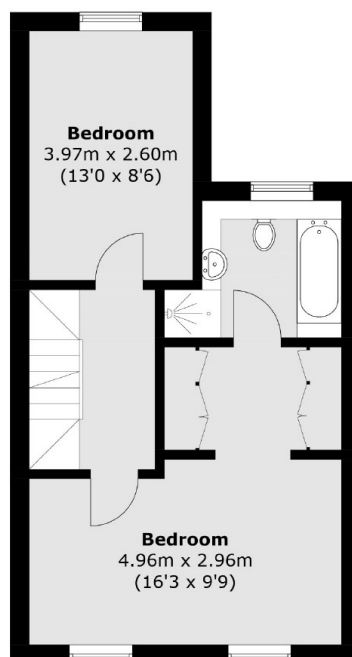
Marcia Road, London, SE1



Second Floor



Ground Floor



First Floor

Total area (approx.): 119.5 sq. m (1286.1 sq. ft)