



## The Highway, E1W

**£461** Per week

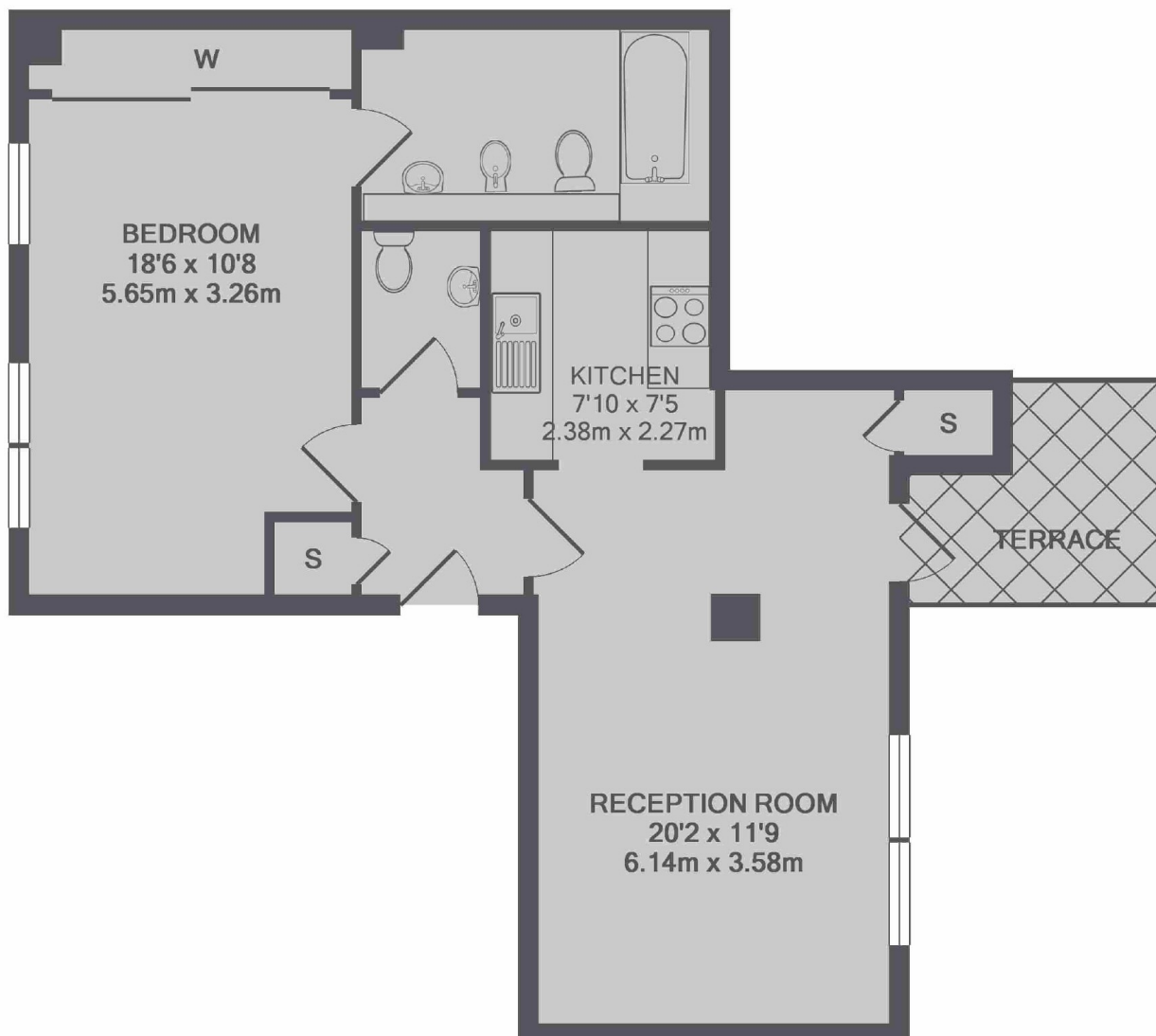
A one bedroom property on the top floor of Free Trade Wharf. This property has a spacious reception leading to a terrace overlooking the Thames. Also includes resident gym facilities, a concierge service and an allocated parking space.

Ideally located for access to The City and Canary Wharf. It is only a short pleasant walk along the river to Canary Wharf and Limehouse DLR is less than a 5 minute walk away.

### Features

- Top Floor Apartment
- One Bedroom
- River views
- Gym/Pool
- Porter
- Allocated Parking

# The Highway, London, E1W



TOTAL APPROX. FLOOR AREA 621 SQ.FT. (57.6 SQ.M.)

## Dexters

Wapping  
123 Wapping High Street  
London  
E1W 3NX  
Lettings  
020 7650 5351

Energy Rating: C. We aim to make our particulars both accurate and reliable. However they are not guaranteed; nor do they form part of an offer or contract. If you require clarification on any points then please contact us, especially if you're traveling some distance to view. Please note that appliances and heating systems have not been tested and therefore no warranties can be given as to their good working order.

 **RICS** | Regulated  
Estate Agent  
and Letting Agent

[dexters.co.uk](https://www.dexters.co.uk)