



## Park Drive, E14

£634 Per week

A bright studio suite apartment on the twenty first floor of One Park Drive. This brand new apartment has an open plan reception room, floor to ceiling windows and a private balcony with breathtaking views.

One Park Drive is a newly completed development moments from the shops, bars and restaurants of Canary Wharf, including the popular Roka Restaurant. Residents can enjoy the luxurious on-site facilities, which include a pool, sauna, steam room, high-tech gym, cinema, residents lounge and 24-hour concierge.

### Features

- Suite Apartment
- Twenty First Floor
- Wooden Flooring
- Balcony
- 24 Hour Concierge
- Furnished

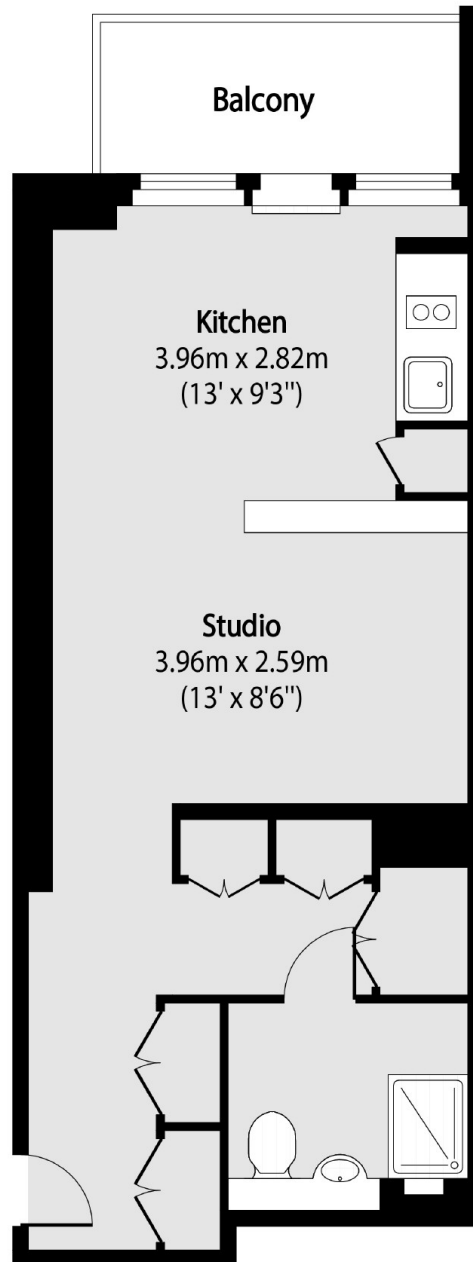


**Park Drive, E14**





# Park Drive, London, E14



Total area (approx): 39.11 sq m (421 sq. ft)

Balcony total area (approx): 4.92 sq m (53 sq. ft)