



Lant Street, SE1

£400,000

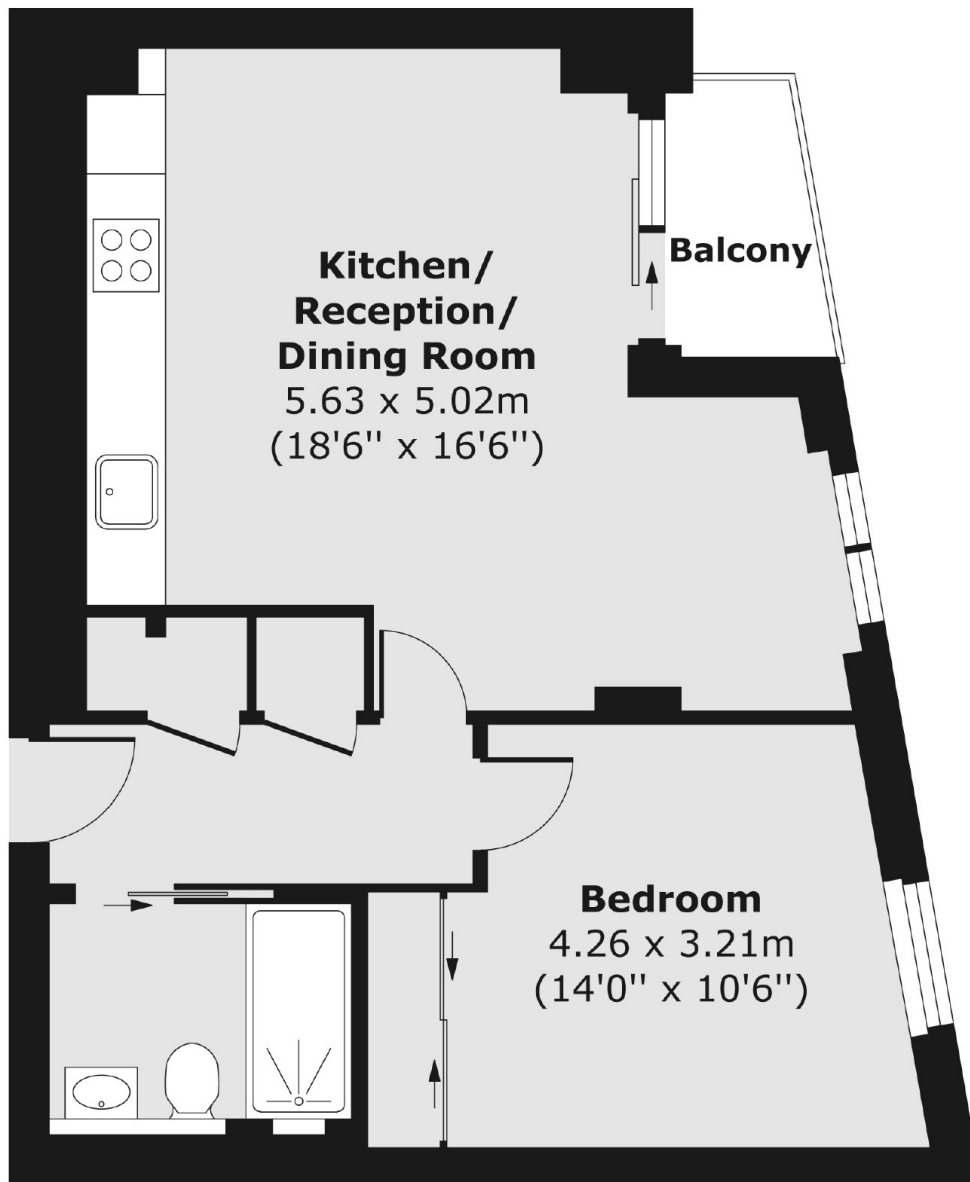
A recently refurbished one double bedroom apartment with hard wood floors, a modern shower room, a generous double bedroom, with built-in wardrobes & an open plan kitchen/ living room, leading out on to a private balcony with views of the Shard & the City Skyline.

The Rise on Lant Street is incredibly well located, tucked behind Borough Underground at the foot of Borough High Street, with London Bridge, Borough Market, the Shard and South Bank all moments away.

Features

- One Double Bedroom
- Open Plan Kitchen & Living Room
- Private Balcony
- Excellent Transport Links
- Very Central Location

Lant Street,
London, SE1



Total area (approx.) 45.42 sq. m (489 sq. ft)
Balcony area (approx.) 2.32 sq. m (25 sq. ft)

Dexters

London Bridge
54 Borough High Street
London
SE1 1XL
Sales
020 7650 5 100

Energy Rating: D. We aim to make our particulars both accurate and reliable. However they are not guaranteed; nor do they form part of an offer or contract. If you require clarification on any points then please contact us, especially if you're traveling some distance to view. Please note that appliances and heating systems have not been tested and therefore no warranties can be given as to their good working order.

 **RICS** | Regulated
Estate Agent
and Letting Agent

dexters.co.uk