



Vaughan Way, E1W

£1,384 Per week

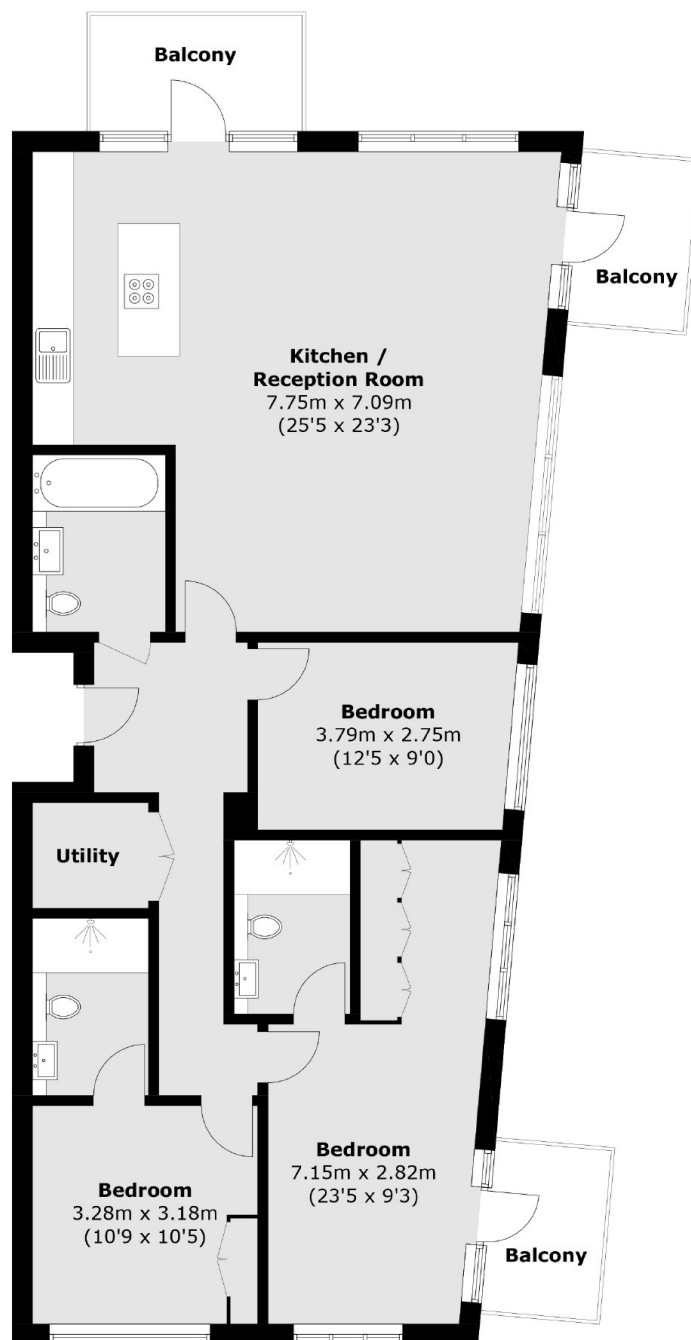
A stunning three bedroom apartment in the very sought after London Dock development located next to St Katherine's Dock and Tower Gateway, fully furnished with three private balconies.

Located within easy reach of Tower Gateway DLR, Tower Hill and Wapping stations. As well as being within walking distance of The City and London Bridge.

Features

- Three Double Bedrooms
- Three Bathrooms
- 1277 Sq Ft
- Furnished
- Three Balconies
- Parking

Vaughan Way, London, E1W



Total area (approx.): 118.7 sq. m (1,277.7 sq. ft)
Balcony: 13.8 sq. m (148.5 sq. ft)

Dexters

Wapping
123 Wapping High Street
London
E1W 3NX
Lettings
020 7650 5351

Energy Rating: B. We aim to make our particulars both accurate and reliable. However they are not guaranteed; nor do they form part of an offer or contract. If you require clarification on any points then please contact us, especially if you're traveling some distance to view. Please note that appliances and heating systems have not been tested and therefore no warranties can be given as to their good working order.

 **RICS** | Regulated
Estate Agent
and Letting Agent

[dexters.co.uk](https://www.dexters.co.uk)