

Wolseley Street, SE1

£500,000

Located moments from the river, this two double bedroom flat is in stunning condition and boasts a large living space, modern kitchen and bathroom, ample storage and offers so much natural light.

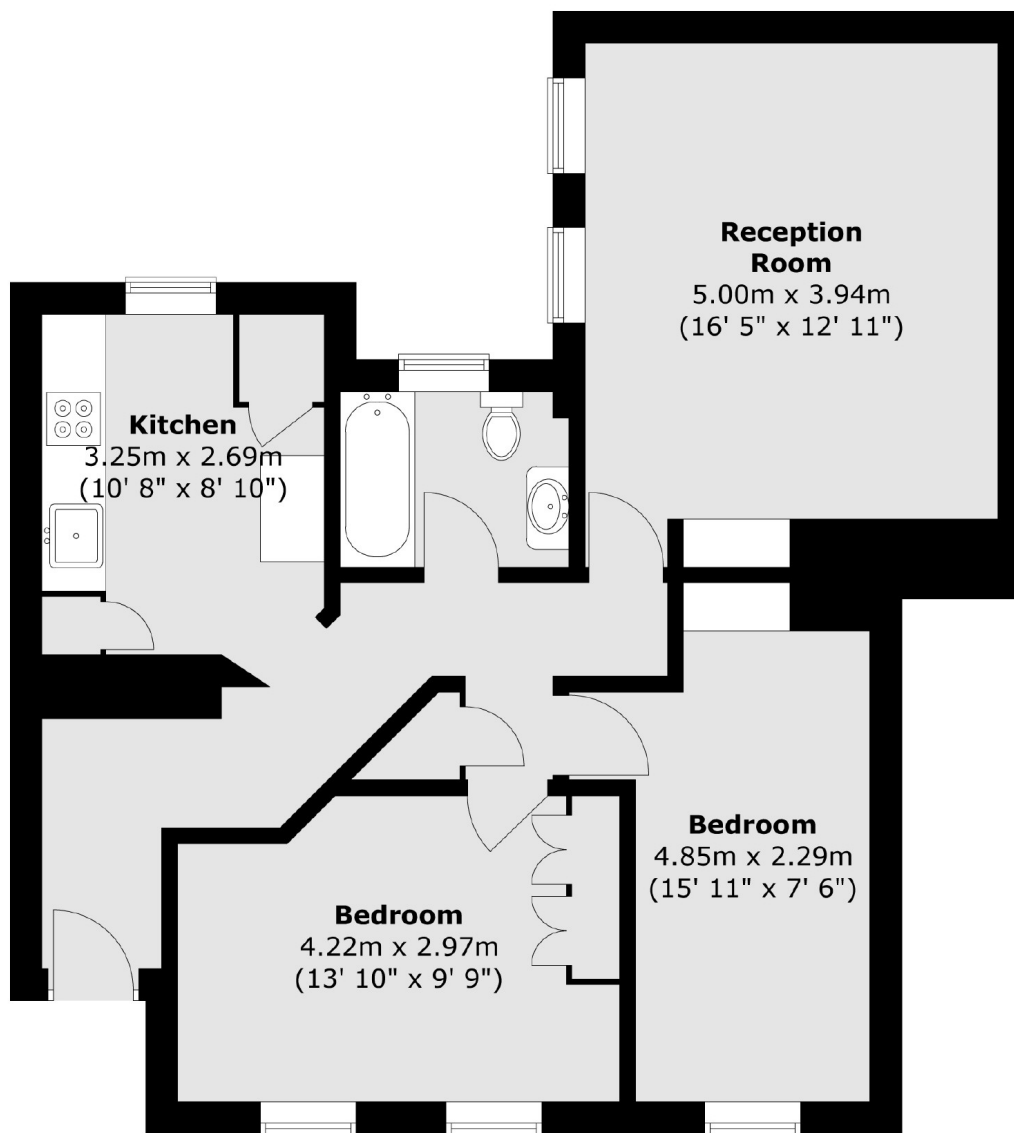
Located just 0.4 miles from Bermondsey station and 0.5 miles from London Bridge station, the apartment offers excellent transport links to all of London. A wide range of shops restaurants and artisan food markets are moments away.

Features

- Two Double Bedrooms
- Stunning Condition
- Fantastic Location
- Ample Storage
- Wooden Flooring Throughout
- Communal Garden

Wolseley Street, London, SE1

Second Floor



Total area (approx.) : 69.2 sq. m (745 sq. ft)