



## Grange Road, SE1

### £1,200,000

An incredibly spacious, almost 1,700 sq ft, 5th floor apartment, with sweeping skyline views, high ceilings and features throughout, a very large open plan living room and kitchen, three generous double bedrooms, two bathrooms and ample storage.

Alaska Buildings is a landmark development situated within a short walk of Bermondsey street and Tower Bridge Road and within walking distance of both Bermondsey and London Bridge stations.

### Features

- Warehouse Style Apartment
- Almost 1,700 sq ft
- Large Master Suite
- 24 Hour Concierge
- Communal Gardens
- Share of Freehold
- Offers in excess of £1,200,000





## Grange Road, SE1

This is an exceptional apartment with a wonderful sense of space and light, offering a blend of modern quality and warehouse style-features, with a triple aspect, high ceilings and large windows on all sides.

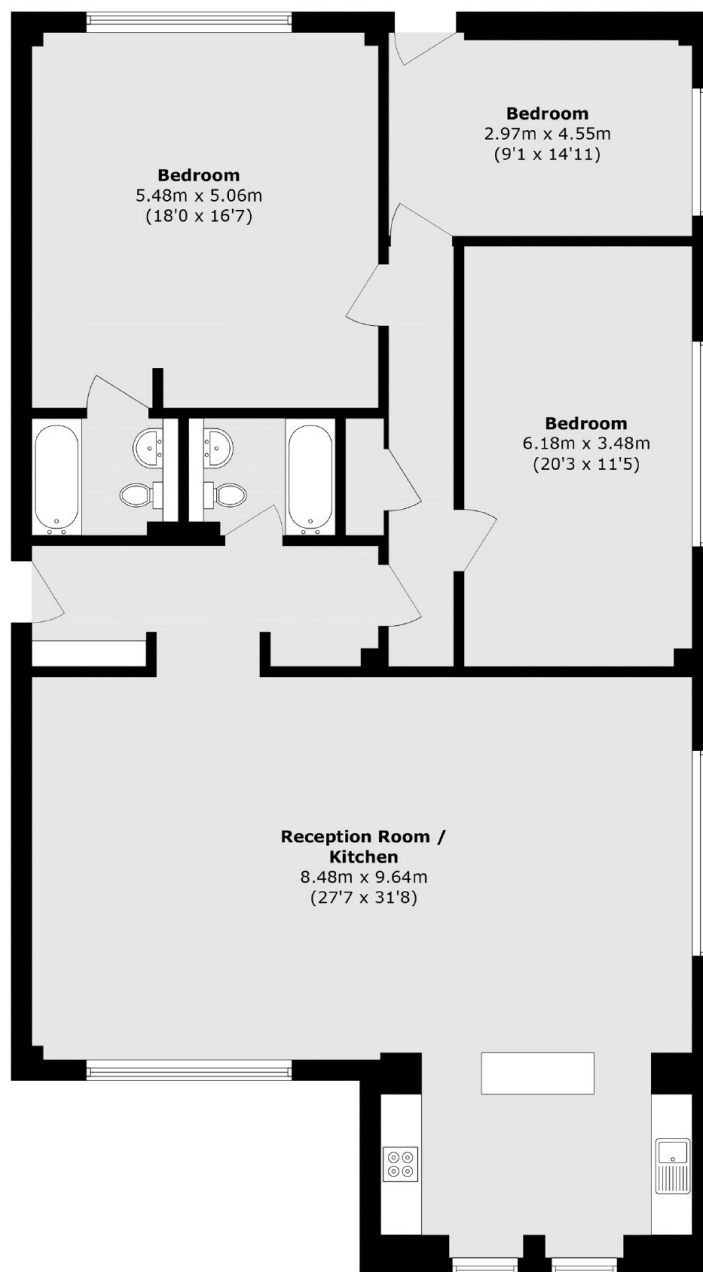
The Alaska Buildings is a very exclusive and secure, gated development, with a very hard to find community feel, a 24 hour concierge and attractive communal water gardens.

With a share of freehold, the residents have much greater control of to the day to day running of the building and the choice of managing agents. The service charge also includes hot water and heating.





# Grange Road, London, SE1



Total area (approx.): 157.6 sq. m (1696.4 sq. ft)

## Dexters

London Bridge  
54 Borough High Street  
London  
SE1 1XL  
Sales  
020 7650 5 100

Energy Rating: C. We aim to make our particulars both accurate and reliable. However they are not guaranteed; nor do they form part of an offer or contract. If you require clarification on any points then please contact us, especially if you're traveling some distance to view. Please note that appliances and heating systems have not been tested and therefore no warranties can be given as to their good working order.

 **RICS** | Regulated  
Estate Agent  
and Letting Agent

[dexters.co.uk](https://www.dexters.co.uk)