



Winchester Square, SE1

£500,000

A smart modern, almost 700 ft² apartment in Winchester Square, Borough Market, with a large open plan kitchen and living room, separate utility room, three piece bathroom, ample storage and a generous double bedroom. Offers in excess of £500,000.

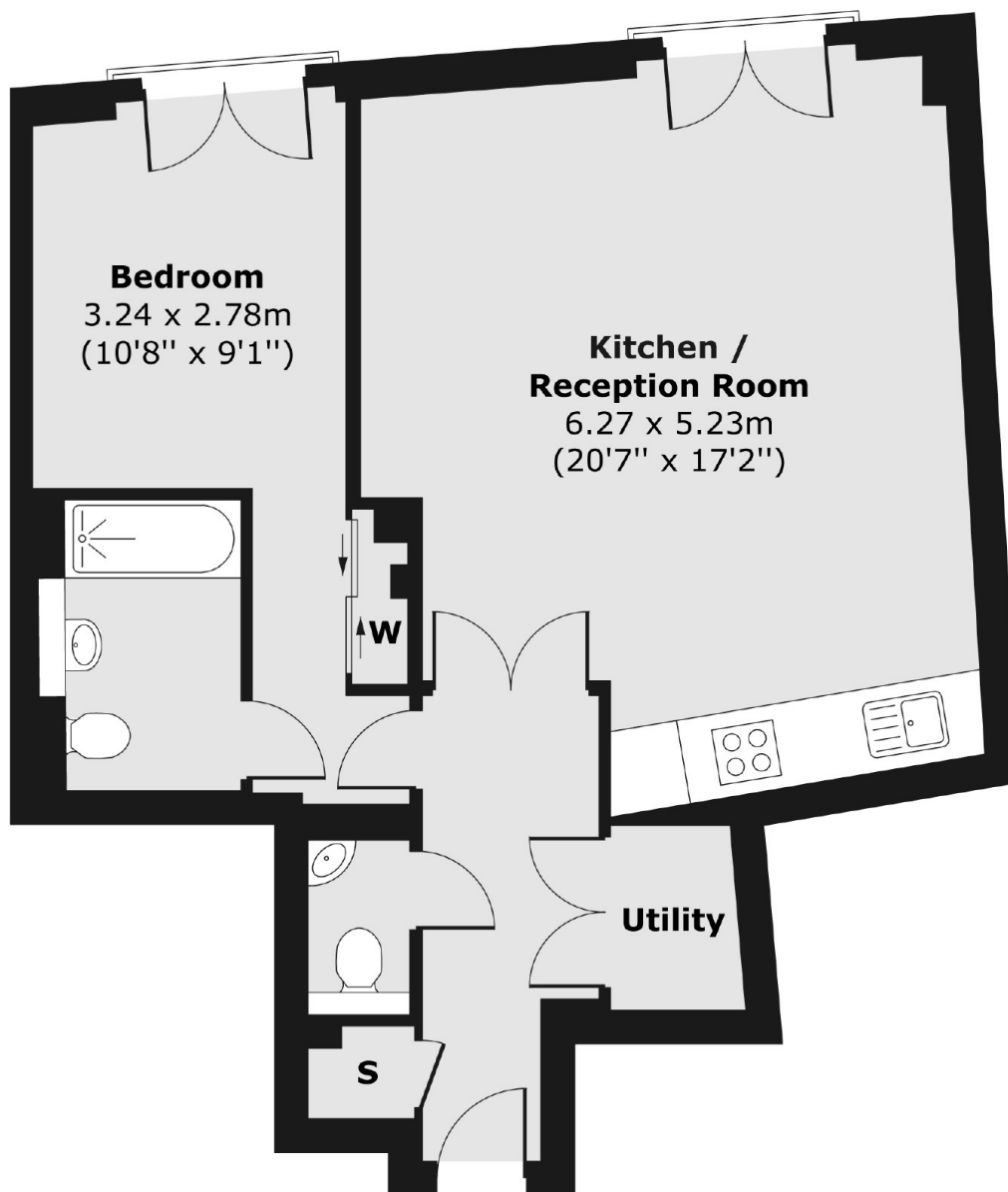
Winchester Square is incredibly well located, tucked just back from Borough Market. London Bridge Station, Bank Side and the Shard are all very close by with numerous amenities and other attractions.

Features

- Offers in excess of £500,000
- Heart of Borough Market
- Highly Desirable Location
- Separate Utility Room
- Almost 700 ft²
- Lift Access & Secure Entry

Winchester Square, London, SE1

First Floor



Total area (approx.) 62.25 sq. m (670 sq. ft)