

## Shad Thames, SE1

### £1,000,000

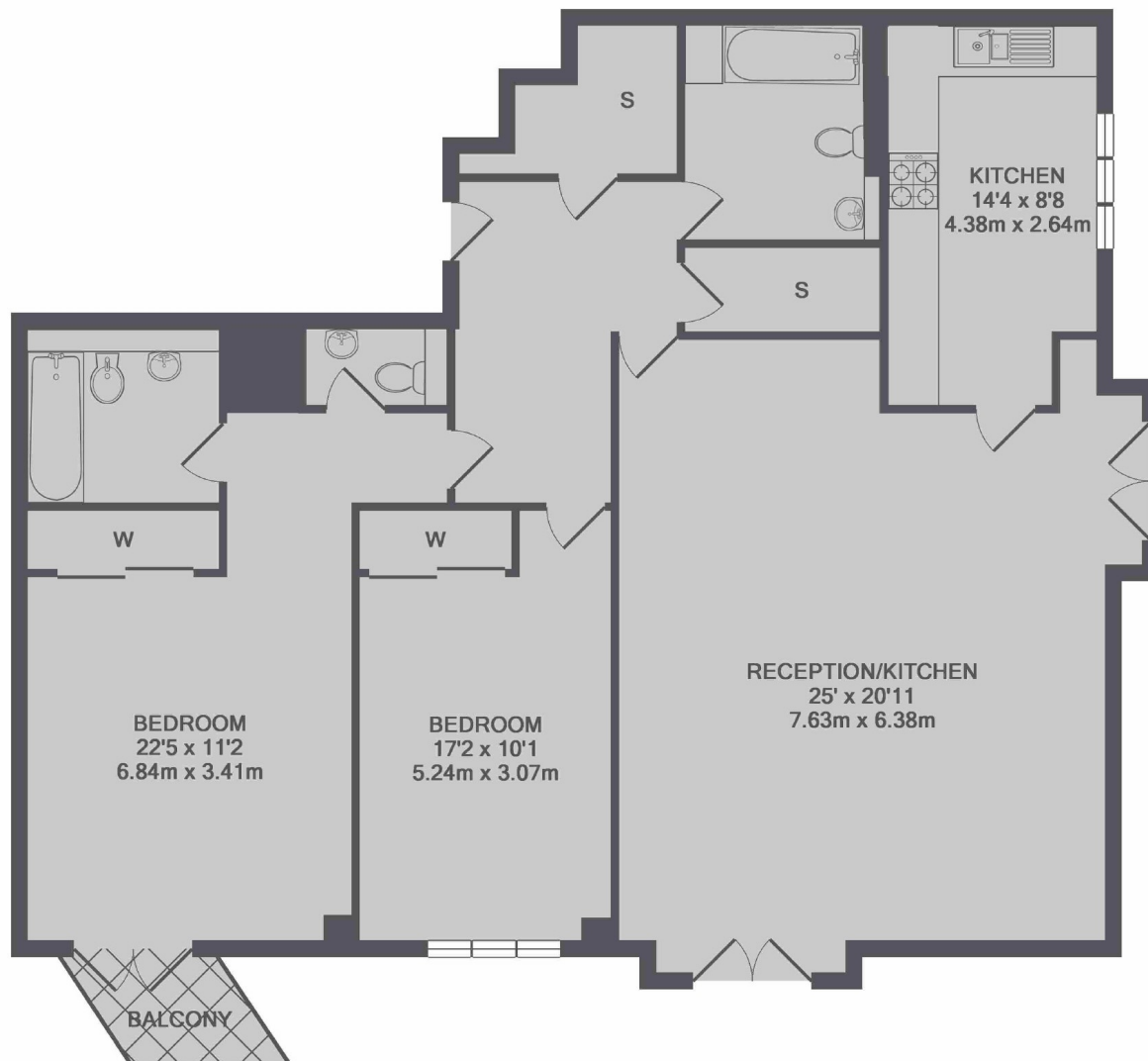
Located in the heart of Shad Thames, this two double bedroom flat is in fantastic condition and retains all of its original features. It boasts a spacious living space, separate kitchen and large terrace overlooking Shad Thames.

Butlers Wharf is situated directly on the river Thames with great views of Tower Bridge and The City. The cobbled streets and riverside restaurants of Shad Thames are on the doorstep, perfect for an after work riverside drink.

### Features

- Two Double Bedroom
- Two Bathrooms
- Private Terrace
- Incredible Location
- Riverside Development
- Secure Allocated Parking
- Offers Over £1,000,000

# Shad Thames, London, SE1



TOTAL APPROX. FLOOR AREA 1339 SQ.FT. (124.4 SQ.M.)

## Dexters

London Bridge  
54 Borough High Street  
London  
SE1 1XL  
Sales  
020 7650 5 100

Energy Rating: C. We aim to make our particulars both accurate and reliable. However they are not guaranteed; nor do they form part of an offer or contract. If you require clarification on any points then please contact us, especially if you're traveling some distance to view. Please note that appliances and heating systems have not been tested and therefore no warranties can be given as to their good working order.

 **RICS** | Regulated  
Estate Agent  
and Letting Agent

[dexters.co.uk](https://www.dexters.co.uk)