



Abbey Street, SE16

£650,000

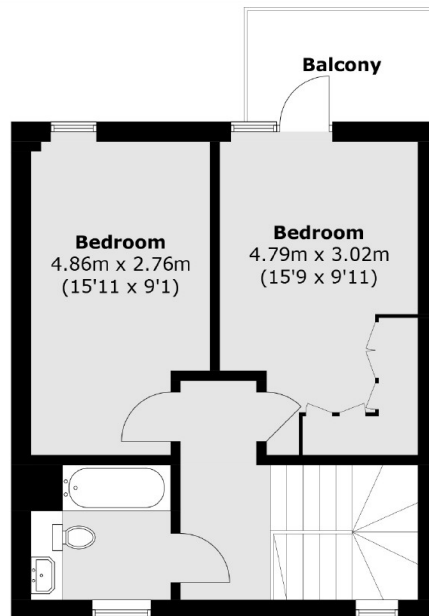
Arranged over two floors, this 1,000 square foot top floor flat is in immaculate condition and boasts a large open plan kitchen living space, three double bedrooms, two bathrooms, ample storage and two private balconies.

Pitman Building is 0.2 miles from Bermondsey station. Shad Thames, the Riverside, London Bridge, Bermondsey Street and a wide range of artisan delis, bakeries and food markets are within easy reach.

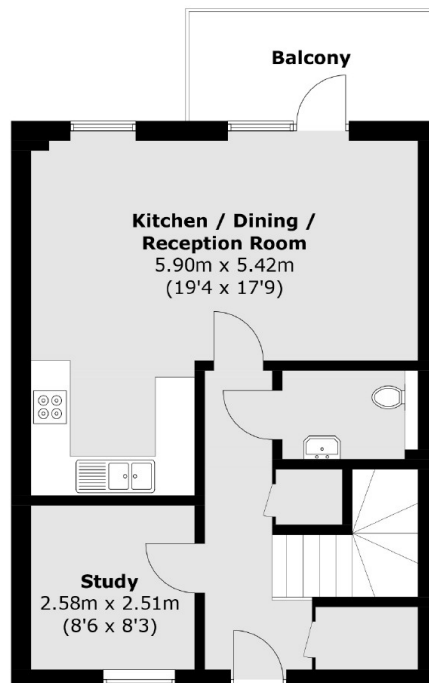
Features

- Three Double Bedrooms
- Two Bathrooms
- Two Balconies
- Excellent Condition
- Split Level
- Fantastic Location
- Offers over £650,000

Abbey Street,
London, SE16



Fourth Floor



Third Floor

Total area (approx.): 89.8 sq. m (966.6 sq. ft)
Balconys: 11.0 sq. m (118.4 sq. ft)

Dexters

London Bridge
54 Borough High Street
London
SE1 1XL
Sales
020 7650 5 100

Energy Rating: B. We aim to make our particulars both accurate and reliable. However they are not guaranteed; nor do they form part of an offer or contract. If you require clarification on any points then please contact us, especially if you're traveling some distance to view. Please note that appliances and heating systems have not been tested and therefore no warranties can be given as to their good working order.

 **RICS** | Regulated
Estate Agent
and Letting Agent

[dexters.co.uk](https://www.dexters.co.uk)