



Keppel Row, SE1

£700,000

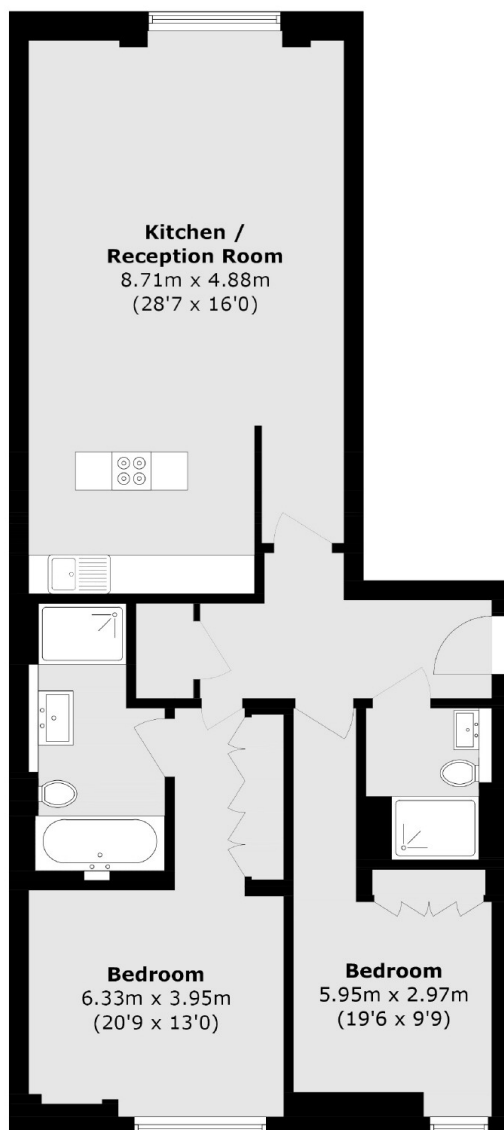
An incredibly spacious and immaculately presented, almost 1,100 sq ft lateral apartment with two very generous double bedrooms, two bathrooms, ample storage and a very spacious south-facing, open plan living room and kitchen, with plenty of room for dining and an additional seating area. Sold chain free with secure off-street parking.

America House is enviably located, on Keppel Row, in the heart of SE1 with easy access to the South Bank, London Bridge Southwark and Waterloo, plus numerous local amenities and attractions, such as Borough Market, Flat Iron Square, the Globe Theatre, the Cut and Lower Marsh.

Features

- Almost 1,100 Sq Ft
- Two Bedrooms
- Two Bathrooms
- South-Facing Living Room
- Secure Off-Street Parking
- Very Central Location
- Excellent Transport Links

Keppel Row, London, SE1



Total area (approx.): 100.3 sq. m (1079.6 sq. ft)

Dexters

London Bridge
54 Borough High Street
London
SE1 1XL
Sales
020 7650 5 100

Energy Rating: B. We aim to make our particulars both accurate and reliable. However they are not guaranteed; nor do they form part of an offer or contract. If you require clarification on any points then please contact us, especially if you're traveling some distance to view. Please note that appliances and heating systems have not been tested and therefore no warranties can be given as to their good working order.

 **RICS** | Regulated
Estate Agent
and Letting Agent

dexters.co.uk