



Rossetti Road, SE16

£325,000

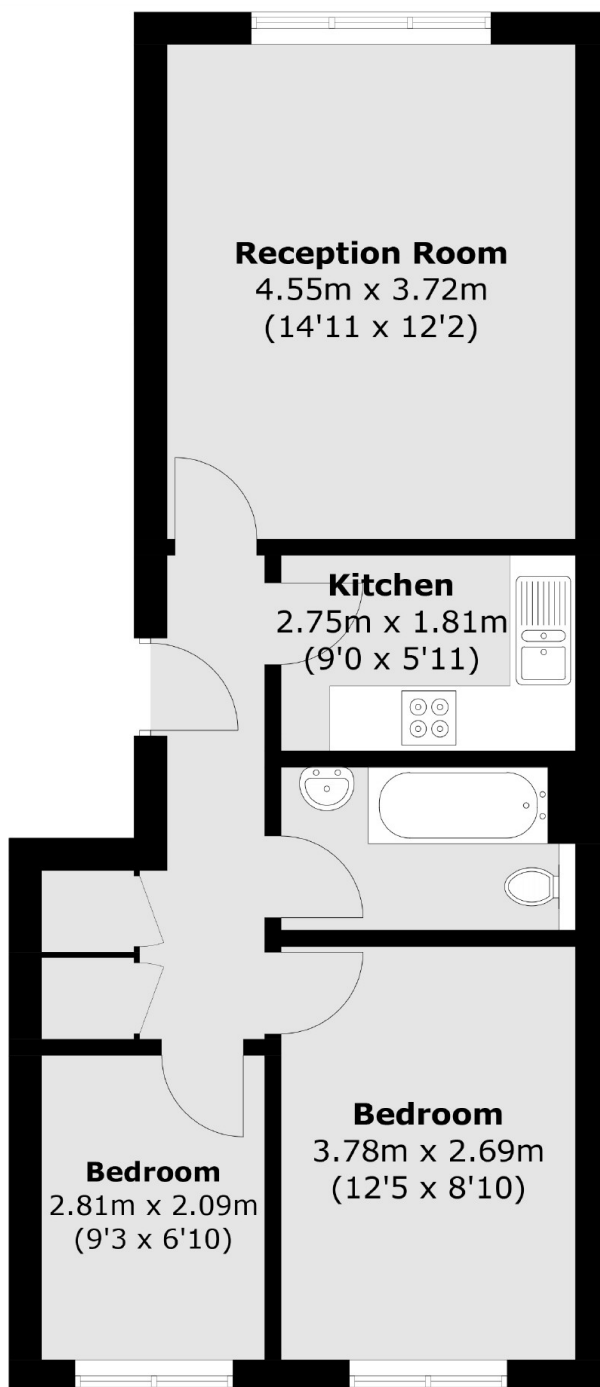
A highly attractive two bedroom flat in excellent condition with a large living room and separate fully fitted kitchen, a three piece family bathroom and ample storage, plus well-maintained communal gardens, allocated parking and plenty of natural light.

Rossetti Road is enviably located, only 0.3 miles from South Bermondsey station and 0.8 miles from Bermondsey station. A wide range of shops, cafés and restaurants are also close by.

Features

- Two Bedrooms
- Double Glazed & Secure Entry
- Allocated Parking
- Great Location
- Communal Gardens
- Long Lease

Rossetti Road, London, SE16



Total area (approx.): 50.7 sq. m (545.7 sq. ft)