



## Green Walk, SE1

### £1,100,000

A 1,744 sq ft Warehouse Conversion, with exposed brick, large sash windows, a spacious open plan kitchen & living room, three double bedrooms & three bathrooms, sold with a Share of Freehold and chain free. Offers in excess of £1,175,000

The Jam Factory is one of SE1's most desirable developments, set on Rothsay Street, moments from Bermondsey Street, with London Bridge, Borough Market & the Southbank just beyond.

### Features

Offers in excess of £1,175,000  
1,744 Sq Ft  
Sash Windows  
Three Double Bedrooms  
Three Bathrooms  
24 Hour Concierge  
Valid EWS1 Form  
Chain Free Sale



## Green Walk, SE1

This apartment is a fantastic size with a very large living space, allowing ample room for dining, a separate seating area, a large full length kitchen and and is flooded with light due to its many sash windows.

All three bedrooms are generous doubles, each with large built-in wardrobes. The master bedroom benefits from an en-suite shower room, whilst the second and third bedrooms are served by a three piece family bathroom.

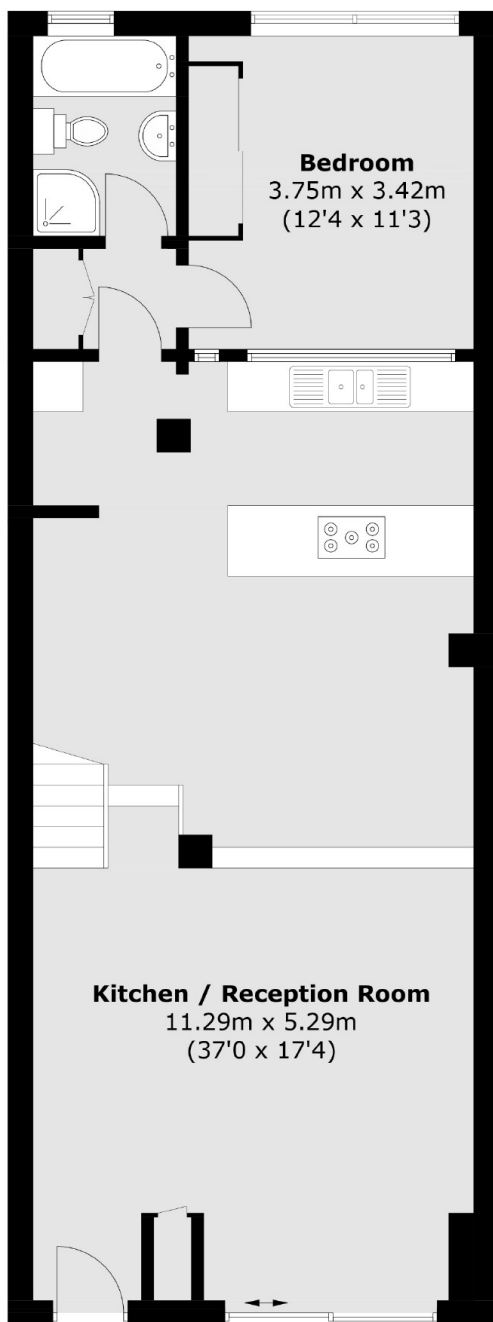
The former Hartley's Jam factory is iconic, award-winning development, with an attractive blend of period charm and contemporary design, accentuating the best original features, yet benefiting from modern fittings throughout.

Benefitting from an on-site concierge, landscaped communal gardens, walkways and a children's' play area, there is a genuine community feel here.

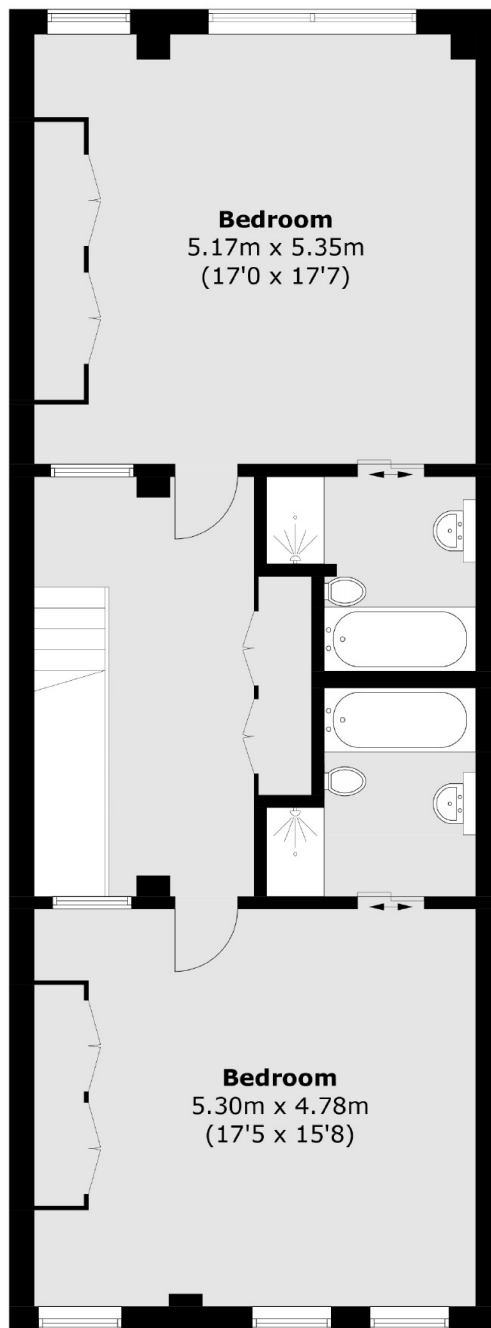




# Green Walk, London, SE1



**Ground Floor**



**First Floor**

Total area (approx.): 162.1 sq. m (1,744.8 sq. ft)

## Dexters

London Bridge  
54 Borough High Street  
London  
SE1 1XL  
Sales  
020 7650 5 100

Energy Rating: C. We aim to make our particulars both accurate and reliable. However they are not guaranteed; nor do they form part of an offer or contract. If you require clarification on any points then please contact us, especially if you're traveling some distance to view. Please note that appliances and heating systems have not been tested and therefore no warranties can be given as to their good working order.

 **RICS** | Regulated  
Estate Agent  
and Letting Agent

[dexters.co.uk](https://www.dexters.co.uk)