



St. Marys Estate, SE16

£400,000

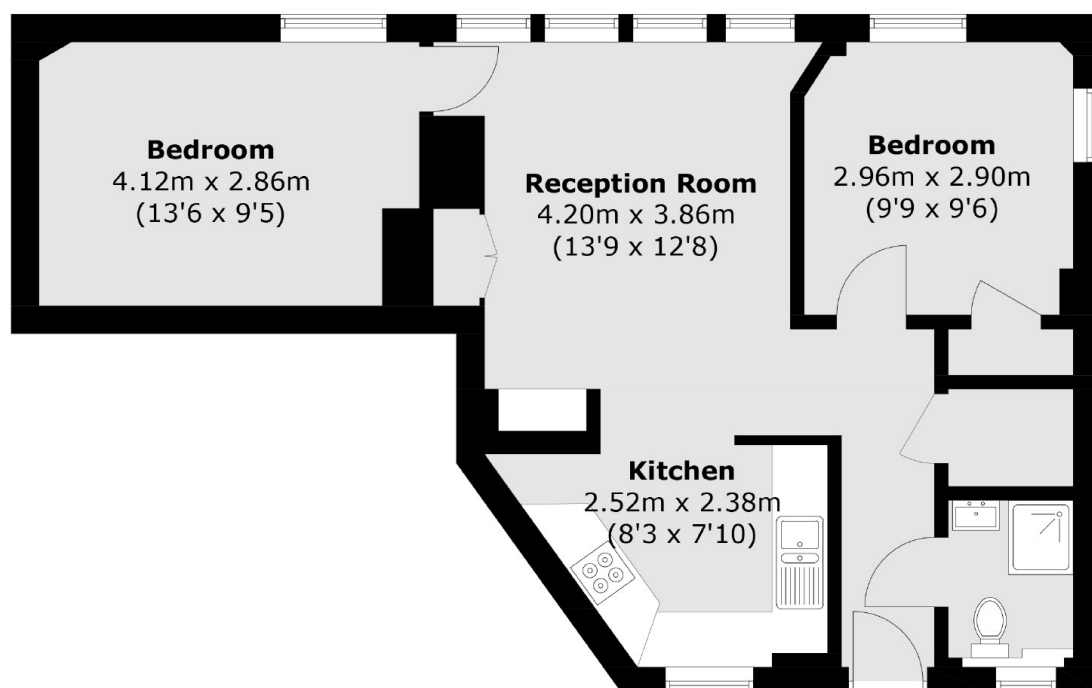
Situated in a quiet development, this two double bedroom flat is immaculately presented and boasts a large open plan kitchen living space, modern bathroom, ample storage and parking.

St Mary's Estate is located 0.1 miles from Rotherhithe station and 0.3 miles from Canada Water station offering fantastic transport links to anywhere in London. A wide range of shops, cafe's and restaurants are moments away.

Features

- Two Double Bedrooms
- Excellent Condition
- Chain Free
- Fantastic Location
- Parking Available
- Double Glazing

St. Marys Estate, London, SE16



Total area (approx.): 54.8 sq. m (589.8 sq. ft)