



## Odessa Street, SE16

### £650,000

Situated within this sought after development, this bright and spacious two double bedroom flat is in stunning condition and boasts a large living space, separate kitchen, two bathrooms, walk-in wardrobe, allocated parking, gym and swimming pool facilities and concierge.

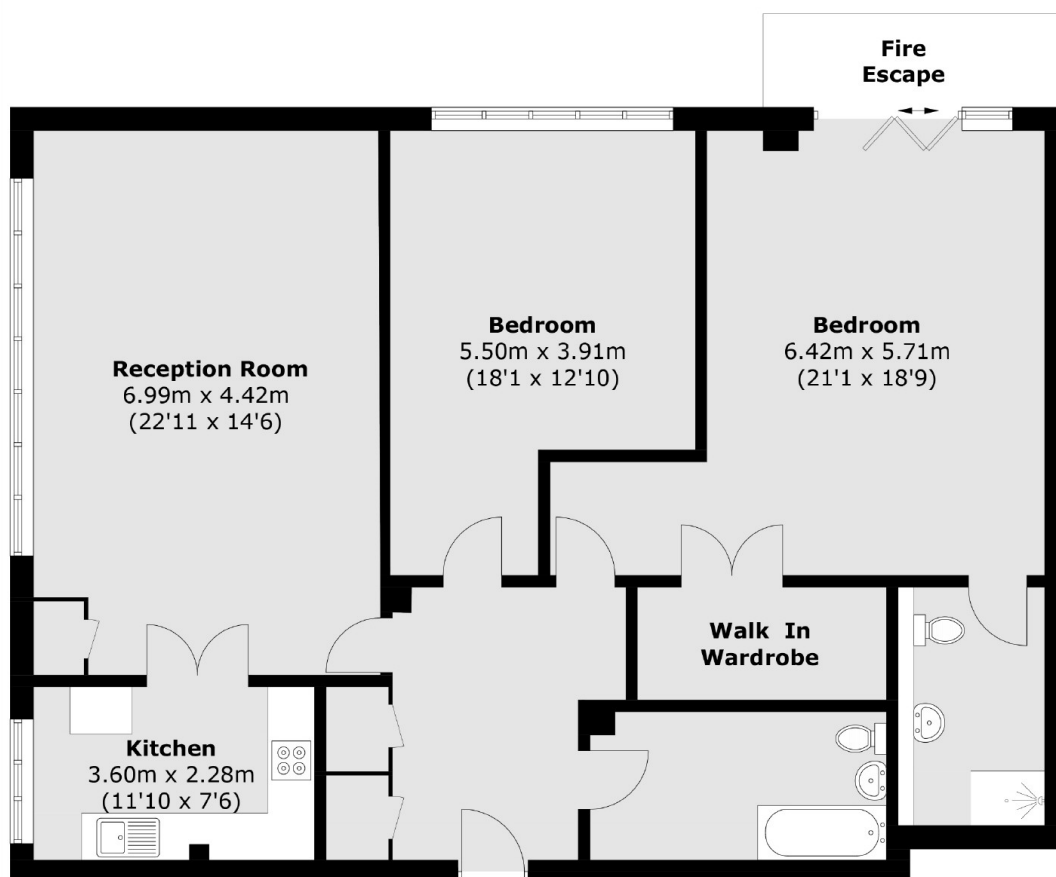
Located less than a mile from Canada Water station and Surrey Quays station, New Caledonian Wharf offers great links to Canary Wharf and The City. The development is also surrounded by riverside restaurants and pubs.

### Features

- Two Double Bedrooms
- Two Bathrooms
- Fantastic Location
- Allocated Parking
- Gated Development
- Concierge, Gym & Pool Facilities



# Odessa Street, London, SE16



Total area (approx.): 120.8 sq. m (1,300.3 sq. ft)

## Dexters

London Bridge  
54 Borough High Street  
London  
SE1 1XL  
Sales  
020 7650 5 100

Energy Rating: C. We aim to make our particulars both accurate and reliable. However they are not guaranteed; nor do they form part of an offer or contract. If you require clarification on any points then please contact us, especially if you're traveling some distance to view. Please note that appliances and heating systems have not been tested and therefore no warranties can be given as to their good working order.

 **RICS** | Regulated  
Estate Agent  
and Letting Agent

[dexters.co.uk](https://www.dexters.co.uk)