



St. James's Road, SE1

£750,000

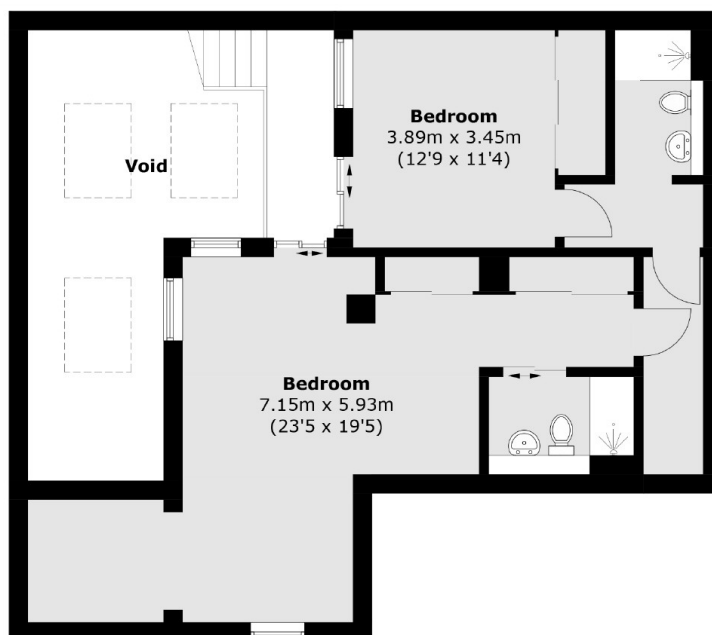
A spectacular split level apartment, spread over almost 1,600 Sq ft, with an incredibly spacious open plan living room and kitchen, full height ceilings & skylights and a walk-in wine room, plus two generous double bedrooms and three bathrooms.

Located in South Bermondsey Chevron Apartments is very well located. Southwark Park and Burgess Park are both nearby, along with Bermondsey tube and South Bermondsey, taking you to London Bridge in five minutes.

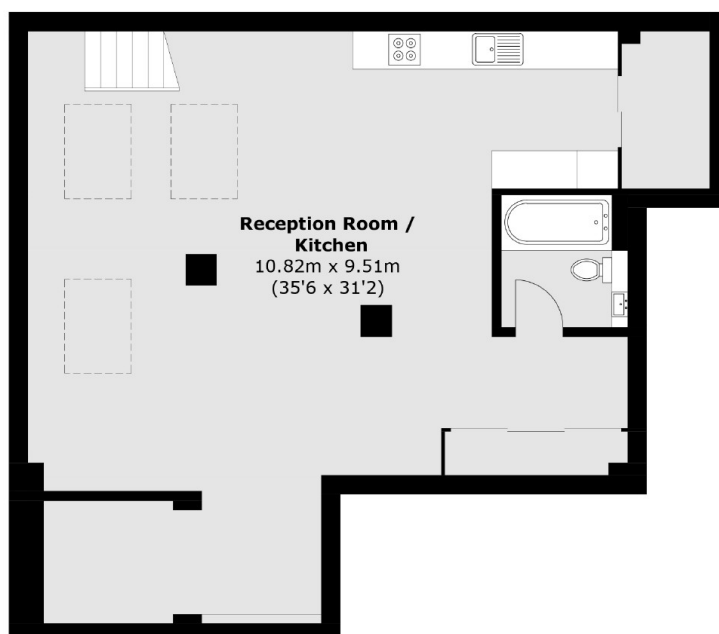
Features

- Almost 1,600 sq ft
- Split Level Apartment
- Very Large Living Room & Kitchen
- Two Double Bedrooms & Three Bathrooms
- High Ceilings & Skylights

St. James's Road, London, SE1



First Floor



Ground Floor

Total area (approx.): 146.6 sq. m (1,578.0 sq. ft)

Dexters

London Bridge
54 Borough High Street
London
SE1 1XL
Sales
020 7650 5 100

Energy Rating: E. We aim to make our particulars both accurate and reliable. However they are not guaranteed; nor do they form part of an offer or contract. If you require clarification on any points then please contact us, especially if you're traveling some distance to view. Please note that appliances and heating systems have not been tested and therefore no warranties can be given as to their good working order.

 **RICS** | Regulated
Estate Agent
and Letting Agent

[dexters.co.uk](https://www.dexters.co.uk)