



Wards Place, E14

£1,050,000

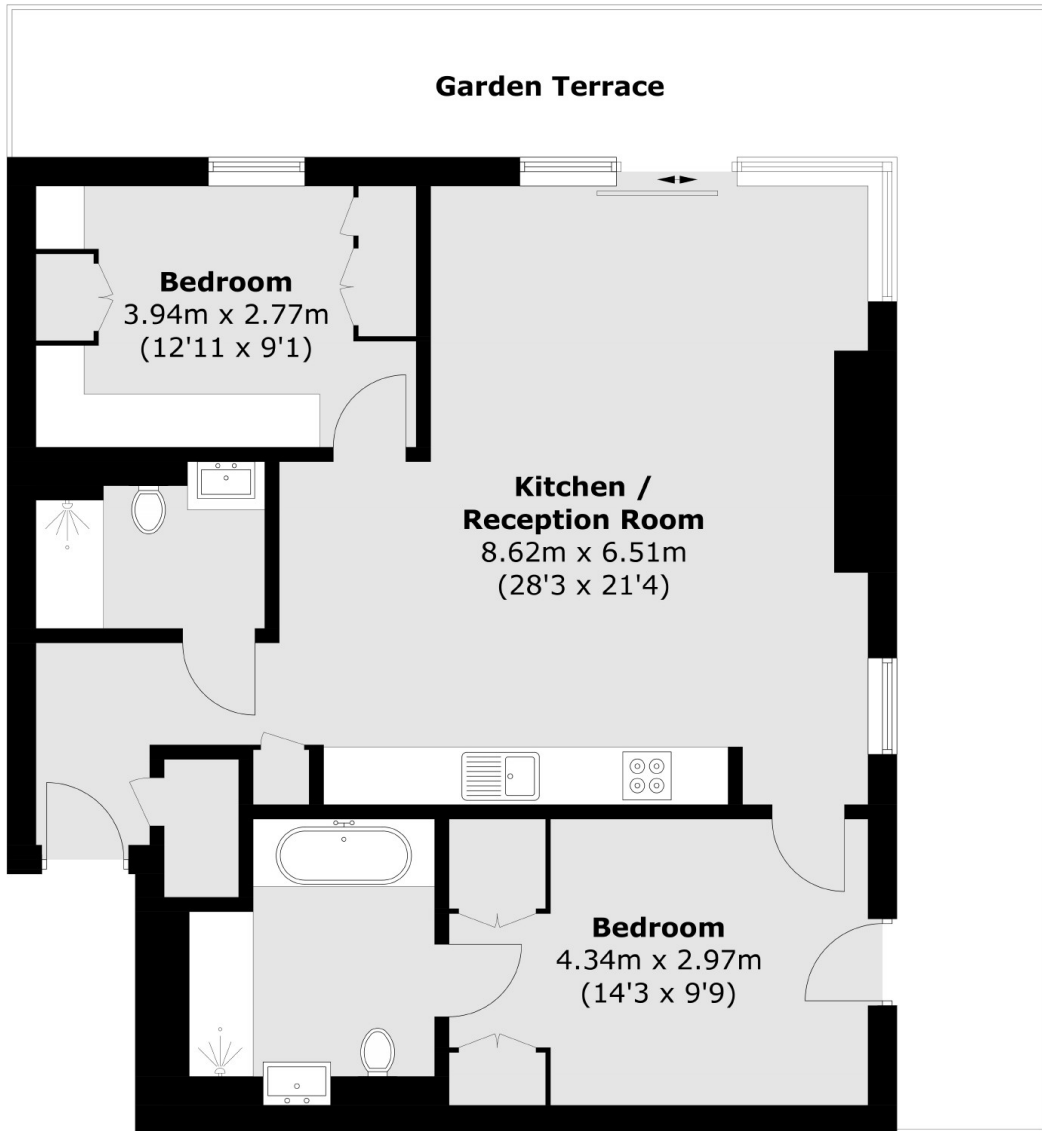
Located on the 28th floor and offering Canary Wharf and River views is this modern two bedroom home within the sought after Warden development. The property is finished to a high specification, has a 342 square foot terrace, residents leisure facilities such as gym, pool spa and roof top bar and concierge service.

Located just a few moments from Canary Wharf which provides access to Canary Wharf Underground / DLR / Crossrail (Elizabeth Line which all provide good links to the City. Waitrose super market, John Lewis and the shopping centre are all easily found in Canary Wharf along with a selection of bars and restaurants.

Features

- 342 Sq.Ft. Terrace
- Concierge Service
- Resident Facilities
- 28th Floor
- River and Canary Wharf Views
- Two Bedrooms

Wards Place, London, E14



Total area (approx.): 79.1 sq. m (851.4 sq. ft)
Garden Terrace: 31.8 sq. m (342.3 sq. ft)