



Marine Street, SE16

£500,000

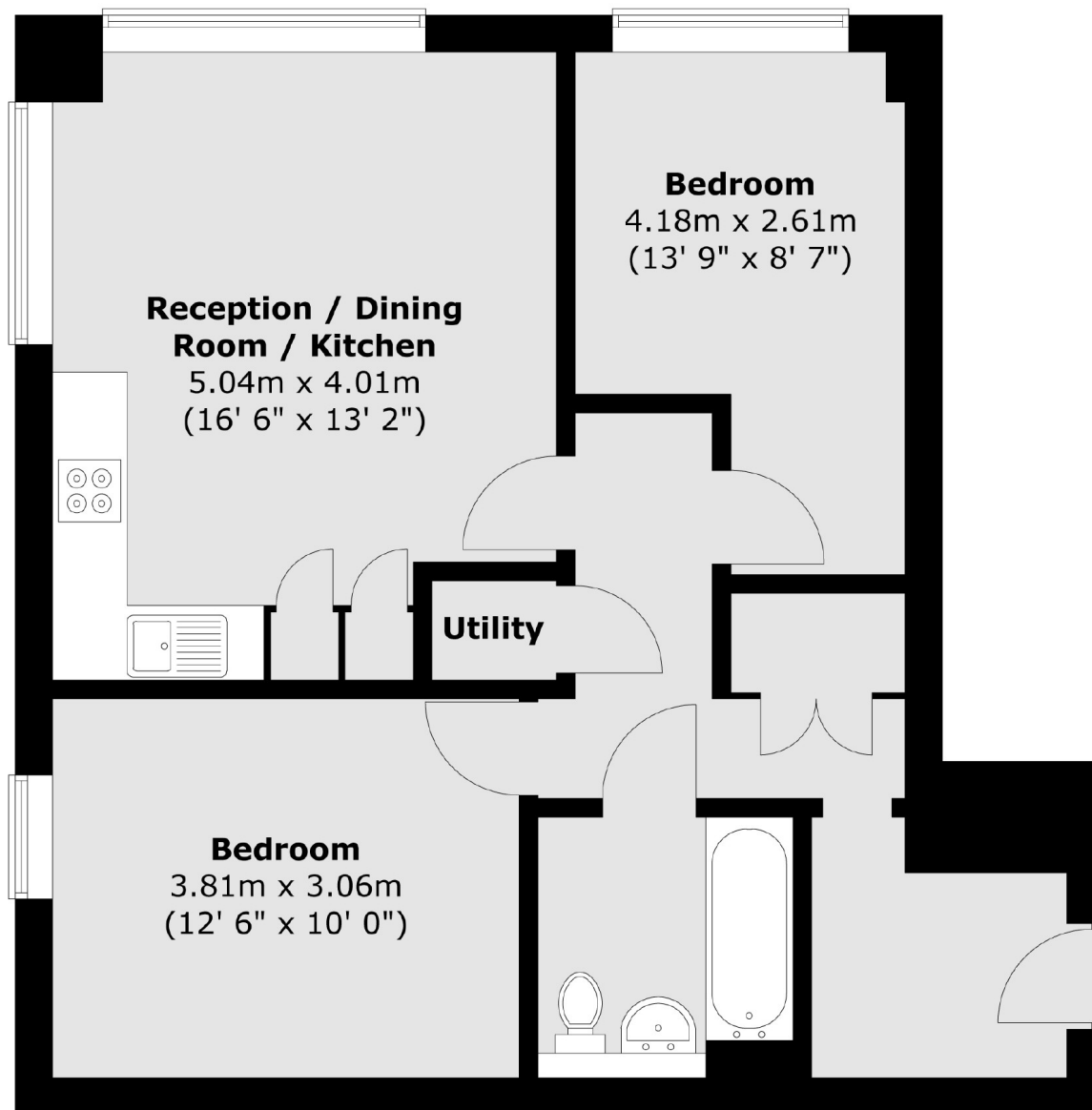
Situated moments from Bermondsey station, this two double bedroom flat is in fantastic condition and has a large open plan kitchen/ living space, ample storage and lots of natural light.

Eyot House is only 0.2 miles from Bermondsey station. Shad Thames, London Bridge, Maltby Street Market and a wide range of shops, cafés, delis and restaurants are all close by.

Features

- Two Double Bedrooms
- Excellent Condition
- Communal Bike Storage
- Fantastic Location
- Long Lease
- Compliant EWS1 Form

Marine Street, London, SE16



Total area (approx.) : 58.8 sq. m (633 sq. ft)