



Rotherhithe Street, SE16

£325,000

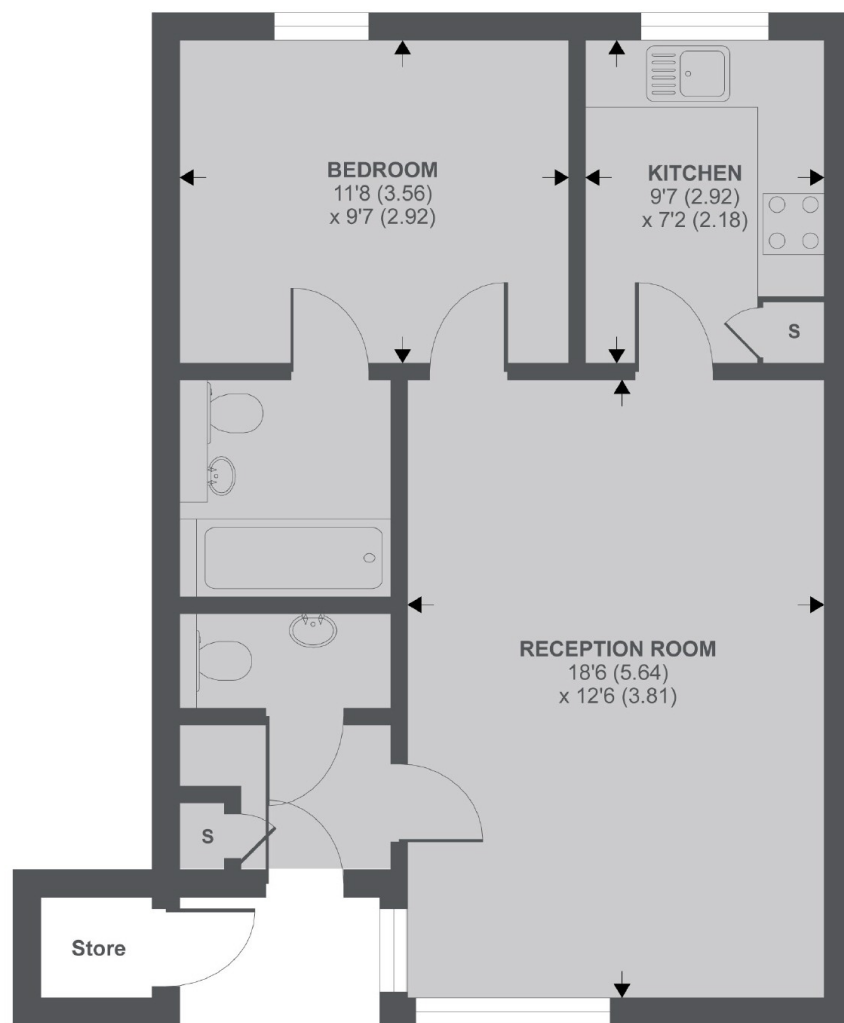
Situated moments from the river, this bright and airy one double bedroom flat is immaculately presented and boasts a large living room, separate kitchen, two bathrooms, great transport links, plus communal gardens & tennis courts.

Located within a mile from Canada Water station and Surrey Quays station, the development offers excellent transport links to the rest of London and is surrounded by cafés, shops, riverside restaurants and pubs.

Features

- One Double Bedroom
- Excellent Condition
- Two Bathrooms
- Communal Gardens
- Great Transport Links
- Share Of The Freehold

Rotherhithe Street, London, SE16



Ground Floor

APPROX FLOOR AREA 528 SQ.FT 49.2 SQ.M (Excludes Store)

Copyright nichecom.co.uk 2019 REF : 510694