



Yeoman Street, SE8

£325,000

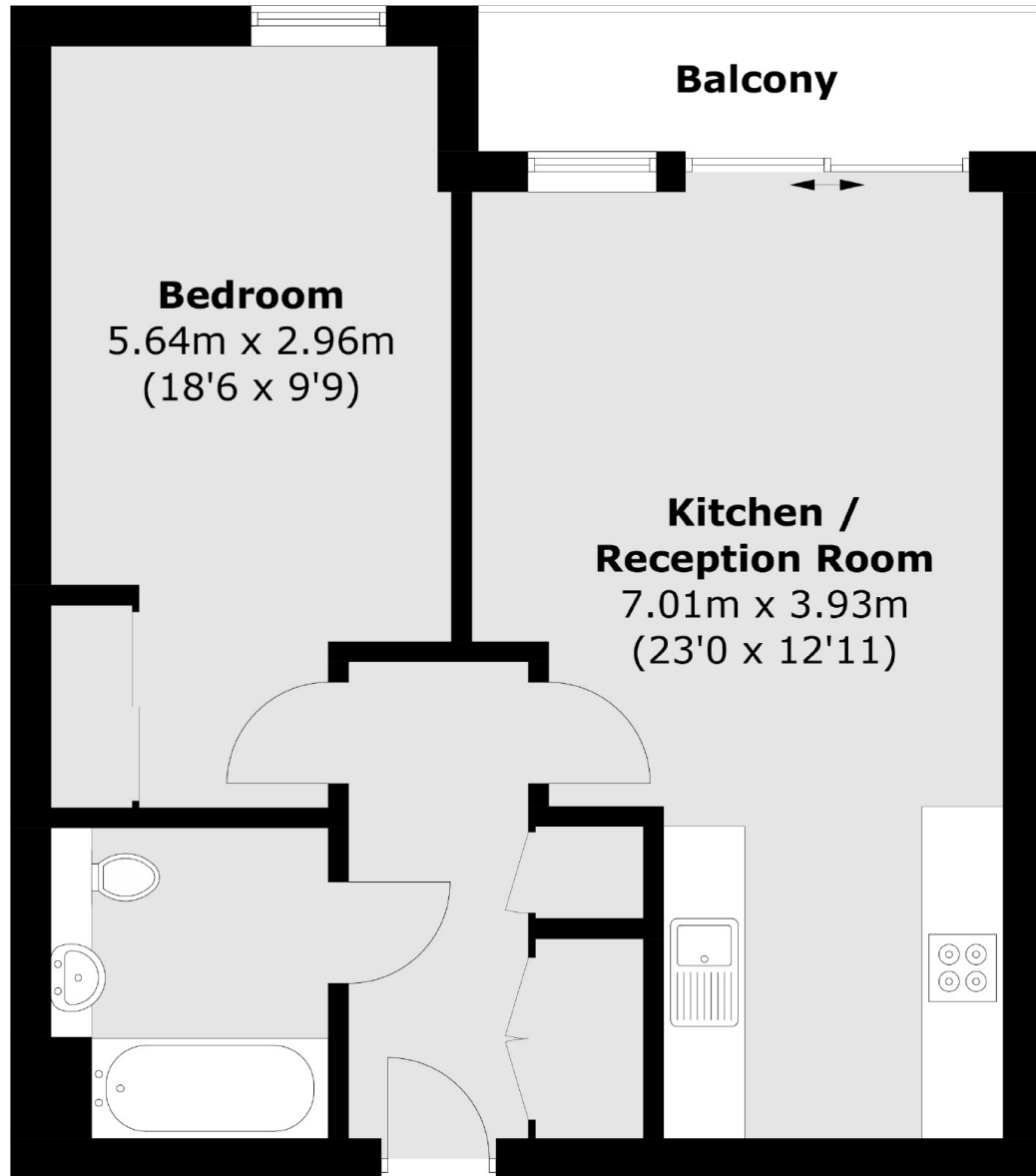
Situated within this extremely sought after development, this stunning one double bedroom flat boasts a large open plan kitchen and living space, modern bathroom, ample storage and private balcony.

Located just 0.4 miles from Surrey Quays station and 0.8 miles to Canada Water station, Mandara Place offers excellent transport links to anywhere in London. A wide range of shops, deli's and restaurants are close by.

Features

- One Double Bedroom
- Excellent Condition
- Long Lease
- Fantastic Location
- Chain Free
- EWS1 Form in Place

**Yeoman Street,
London, SE8**



Total area (approx.): 52.9 sq. m (569.4 sq. ft)
Balcony area (approx.): 4.2 sq. m (45.2 sq. ft)