



Borough High Street, SE1

£1,875,000

An immaculate, split level Penthouse Apartment, with three generous double bedrooms and three bathrooms, within a highly exclusive newly converted period building in the heart of London Bridge with a large wrap-around balcony. Offers in excess of £1,875,000.

The Borough Mansions development is enviably located on Borough High Street, adjacent to the war memorial, 40 yards from London Bridge Underground, with Borough Market just beyond. London Bridge Station provides access to the Northern, Bakerloo and Jubilee Lines, as well as London Overground.

Features

OIEO £1,875,000
Penthouse Apartment
Three Double Bedrooms
Three Bathrooms
Two Private Balconies
Breathtaking Views
Immaculately Presented
Incredible Location
Chain Free Sale



Borough High Street, SE1

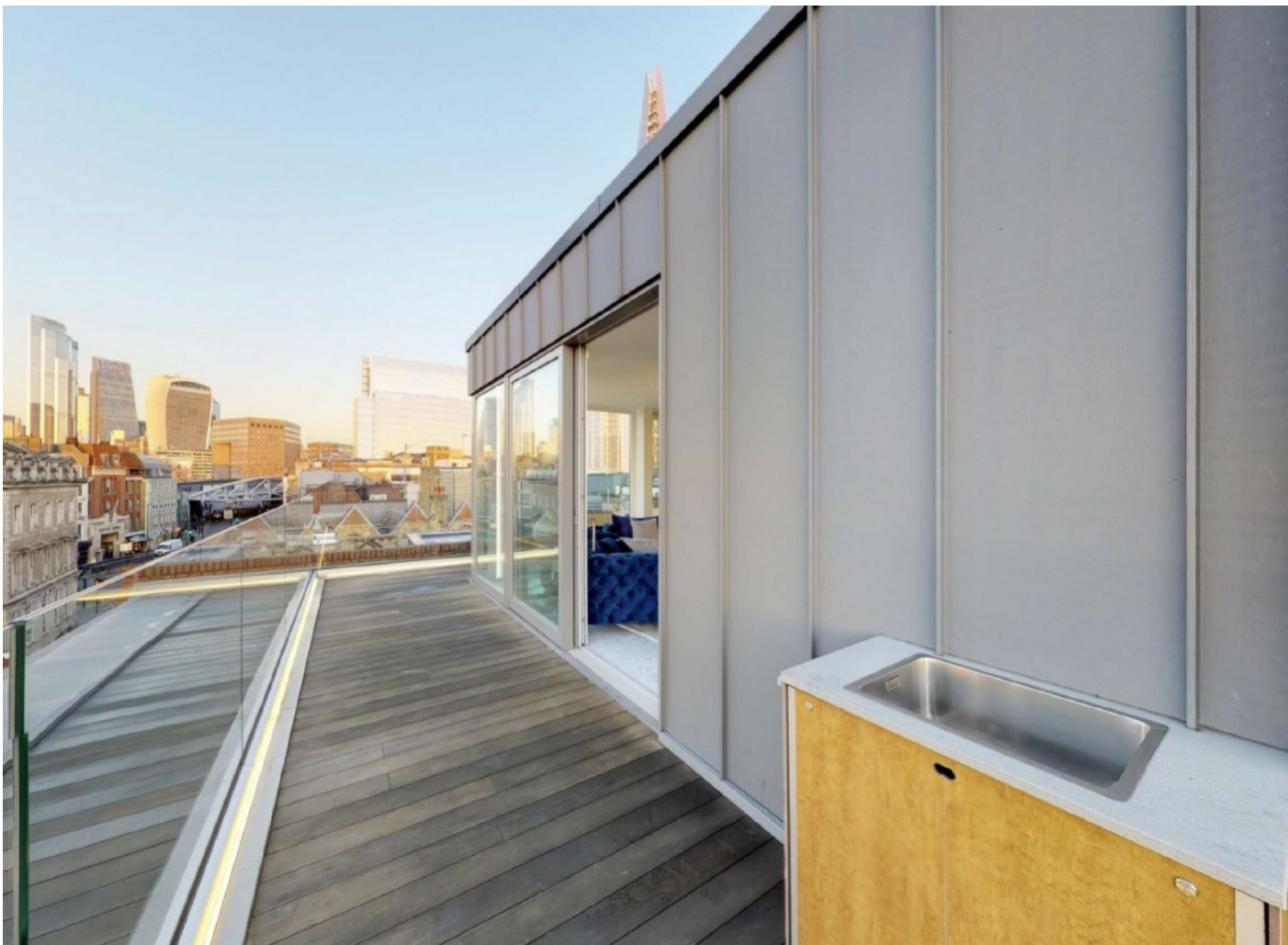
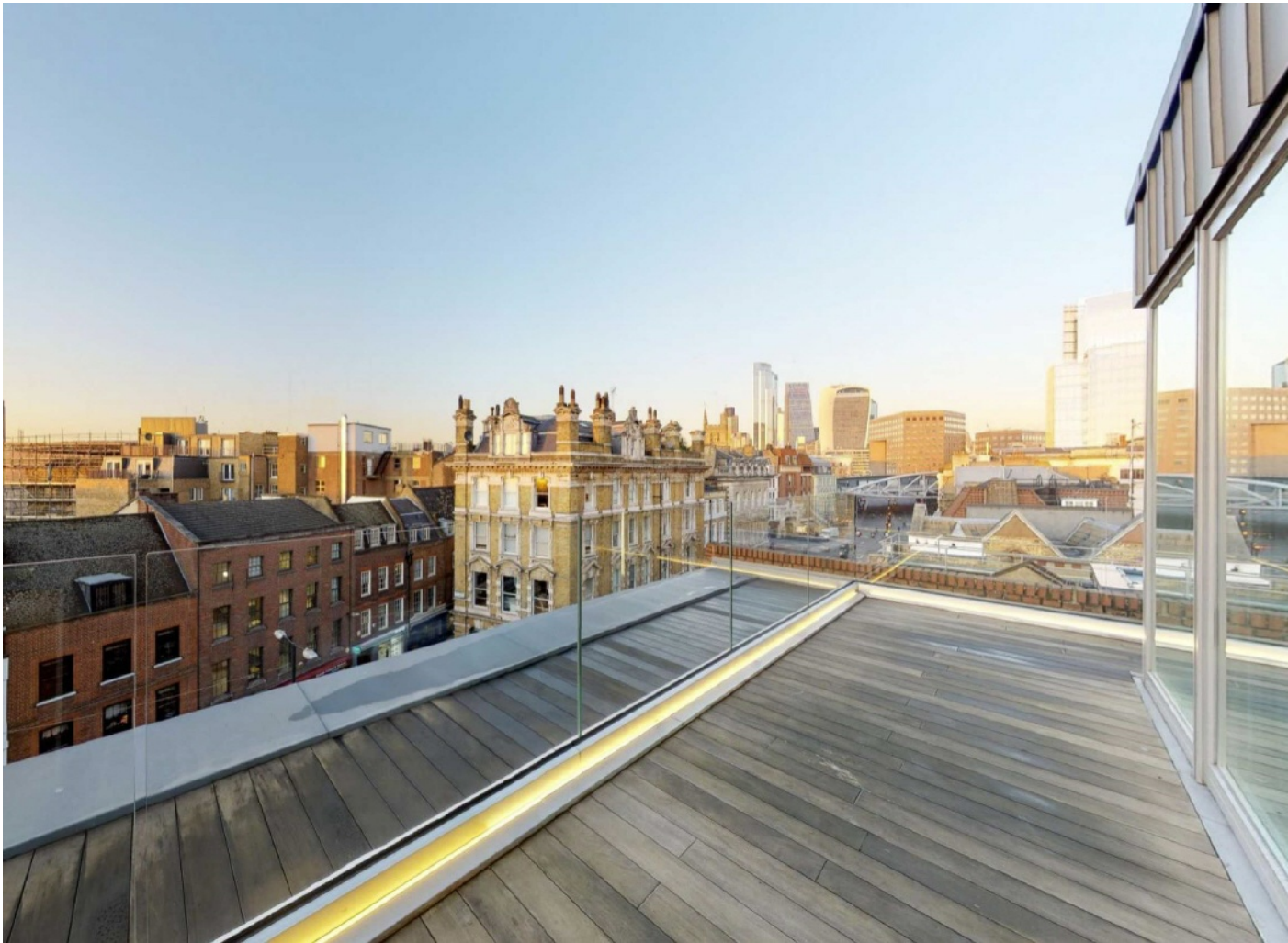
This Penthouse Apartment is very special, split over two floors with three double bedrooms and three bathrooms, a large open plan kitchen - living room and two balconies, both with breathtaking views of the London Skyline, the Shard and Tower Bridge.

The development has been very tastefully conceived, with elegant hard wood flooring, a sympathetic neutral colour scheme, underfloor heating throughout, with an integrated cooling system, and high performance triple glazing.

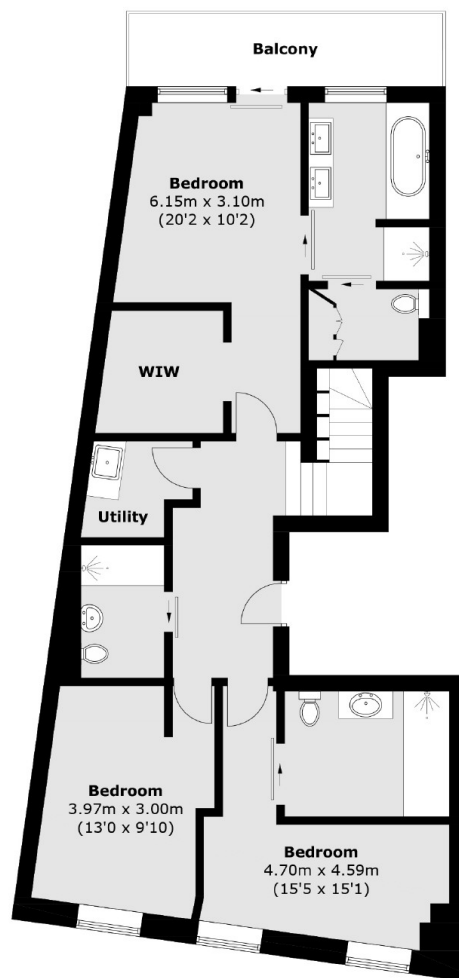
The bathrooms and shower rooms are attractively presented with large Italian Porcelain tiling, Corian bathtubs and shower trays, with overhead showers and stainless steel tap-ware.

The kitchen is a bespoke Italian artisan design, with a single piece stone composite counter-top, a solid wood structure, integrated appliances and plenty of storage, with a separate utility room leading off it.

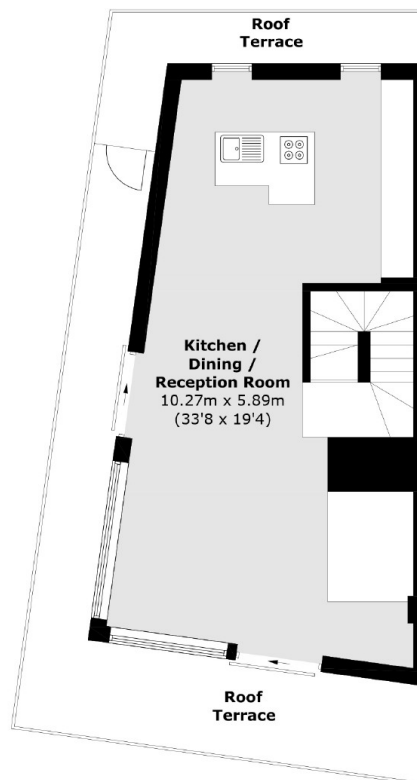
The building is highly secure with a video entry system, reinforced front doors and a daytime porter service. In addition there is bicycle storage in place and lift access to each floor.



Borough High Street, London, SE1



Fourth Floor



Fifth Floor

Total area (approx.): 141.6 sq. m (1,524.2 sq. ft)
Roof Terrace & Balcony: 39.3 sq. m (423.0 sq. ft)