



National Terrace, SE16

£1,500,000

Boasting spectacular views of the London Skyline and the iconic Tower Bridge, this four bedroom house is immaculately presented throughout and offers a large open plan kitchen/ living space, private terrace, balcony and garage.

National Terrace is on the River Thames, only 0.2 miles from Bermondsey Station and 0.4 miles from Rotherhithe station offering excellent transport links to anywhere in London.

Features

- Four Bedrooms
- Three Bathrooms
- Incredible Views
- Private Garden & Balcony
- Communal Garden
- Freehold House
- OIEO £1,500,000



National Terrace, SE16

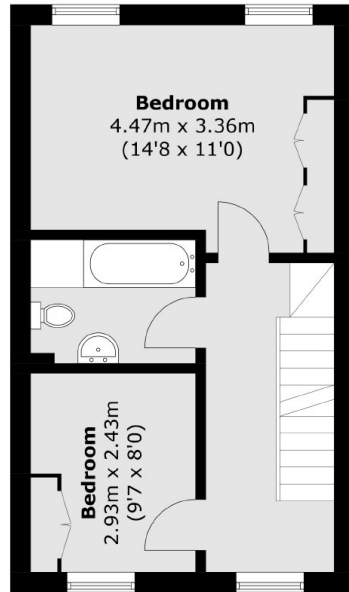
Arranged over four floors the house is beautifully light and airy and boasts ample outdoor space with a private balcony and a private garden which leads onto a large communal terrace on the river.

The house has four good size bedrooms with three bathrooms, utility room, ample storage and a private garage.

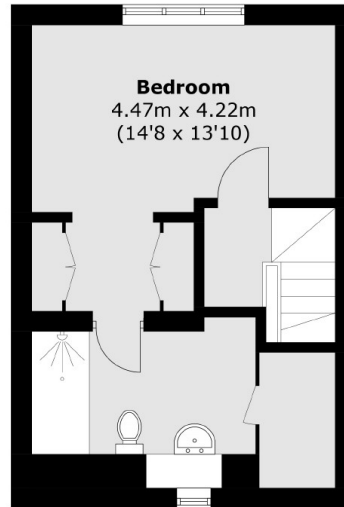
The house is in close proximity to the shops, deli's and restaurants of Shad Thames. Maltby Street Market and Bermondsey Street are also located moments away.



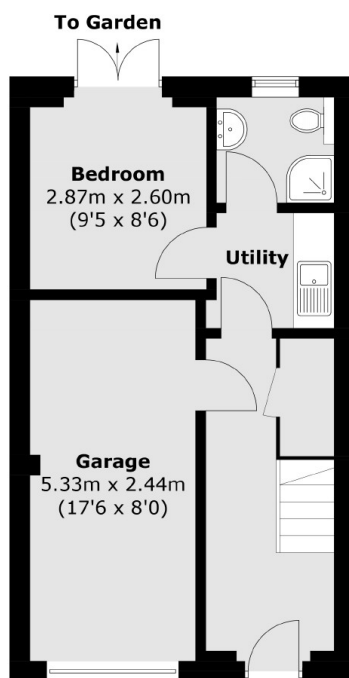
National Terrace, London, SE16



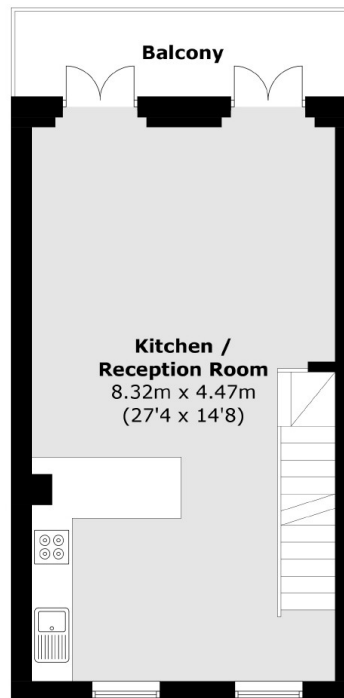
Second Floor



Third Floor



Ground Floor



First Floor

Total area (approx.): 141.7 sq. m (1,525.2 sq. ft)
(Including Garage)

Balcony area (approx.): 6.3 sq. m (67.8 sq. ft)